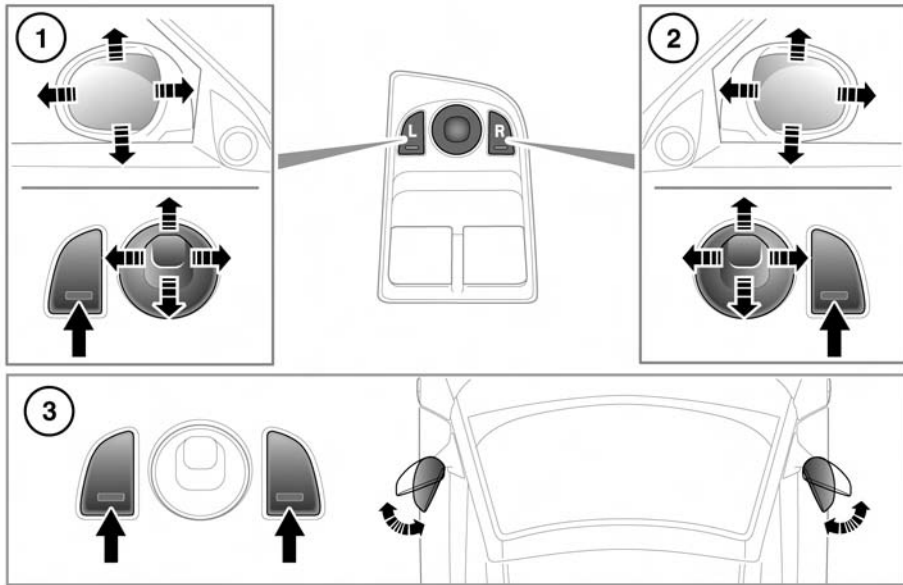


EXTERIOR MIRRORS



5J1334

1. Left mirror adjustment.
2. Right mirror adjustment.
Press the appropriate button to select the mirror to be adjusted (button indicator illuminates), then use the joystick control to adjust the mirror glass.
3. Powerfold/unfold: Press both buttons simultaneously.

This feature will only activate when the vehicle is stationary or travelling at 20 km/h (12 mph) or less.

The mirrors can be adjusted and folded when the ignition is on and for up to 5 minutes after the ignition is switched off, provided the driver's door is not opened.

Note: Depending on the type of lens used, distances may be difficult to judge accurately when only using the mirrors.

The mirrors can be configured to automatically fold when the vehicle is locked and unfold when unlocked. This feature can be enabled or disabled via the touch screen:

From the main **Home** menu, select **Vehicle**:

- Select **Veh. settings**.
- The **Security** screen is selected automatically as the default.
- Select **Mirror fold back On or Off**.

If the mirrors are accidentally knocked out of position (i.e. so only one is folded). To re-engage the mechanism, power the mirror to the foldback position, then outwards to the drive position.

Note: If the mirrors were folded using the switches, they will not unfold when the vehicle is unlocked.

Note: Three different exterior mirror positions can be stored and recalled using the driving position memory feature. See **17, DRIVING POSITION MEMORY**.

MIRROR DIP WHEN REVERSING

The mirrors can be configured so that when reverse gear is selected, the passenger door mirror automatically adjusts to provide an improved viewing angle for reversing.

The exact dipped position can be adjusted using the joystick control, when the mirror is dipped. The next time reverse is selected, the newly adjusted position will be selected.

When the gear selector is moved out of reverse, or if vehicle speed exceeds 7 km/h (4 mph) while reversing, the mirror will return to its previous position.

Mirror dip can be selected or deselected using the touch screen:

From the main **Home** menu, select **Vehicle**:

- Select **Veh. settings**.
- The **Security** screen is selected automatically as the default.
- Select **Parking**.
- Select **Reverse mirror dip On** or **Off**.