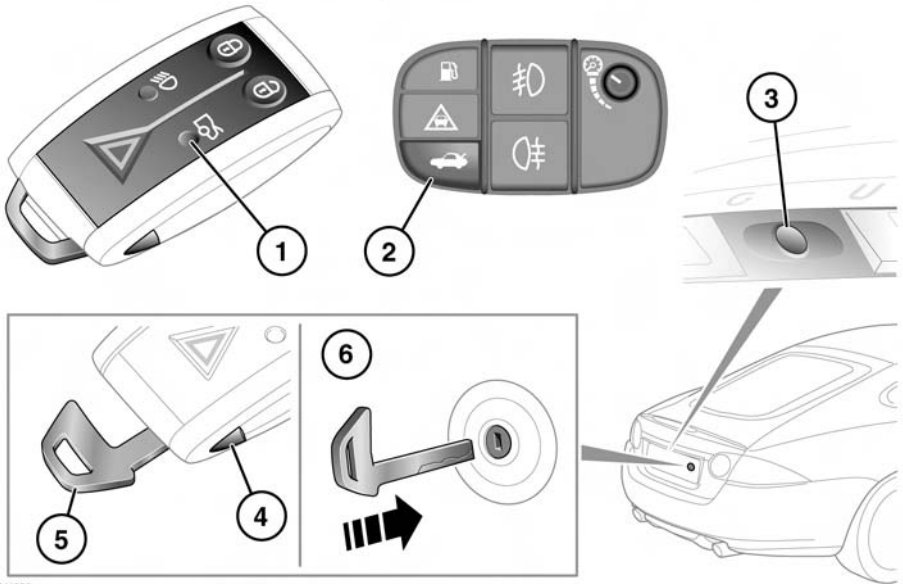



OPENING AND CLOSING THE LUGGAGE COMPARTMENT



SJ1689

-  **(Coupe only): Extreme care must be taken when closing the luggage compartment lid when passengers are travelling in the rear seats.**
-  **Locate heavy loads in the luggage compartment towards the front of the vehicle and secure them to stop them sliding. Loose items can be a hazard.**
-  **Do not drive with the luggage compartment open as exhaust fumes can be drawn into the passenger compartment.**
-  **If the luggage compartment is opened after the driver and passenger doors are locked, ensure that the Jaguar Smart Key remains outside the vehicle when it is closed again.**

-  **The Smart Key may not be detected if it is placed within a metal container or if it is shielded by a device with a back-lit LCD screen, such as a smart phone, laptop (including laptop bag), games console etc.**

Note: To prevent permanent damage to the luggage compartment trim, it is advisable to distribute luggage weight evenly over the entire luggage floor area.

The luggage compartment can be opened using the appropriate button (1) on the Smart Key, or via keyless entry (see 6, **KEYLESS ENTRY**). Provided the vehicle is not locked, the luggage compartment can also be opened using either the interior release button (2) or the exterior release button (3).