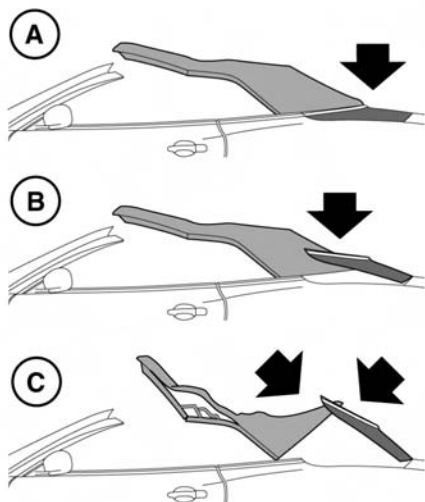


Convertible roof

CONVERTIBLE ROOF MANUAL RE-SET

! It is advisable that two persons carry out this procedure, so that the convertible top and tonneau cover are fully supported when required; although it is possible that this procedure may be carried out by one person with care.

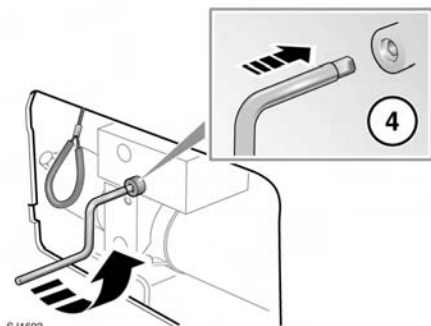
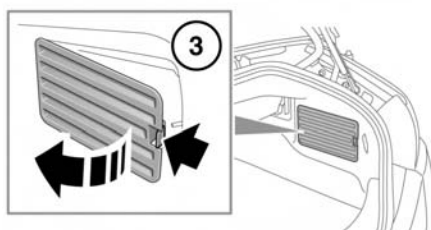
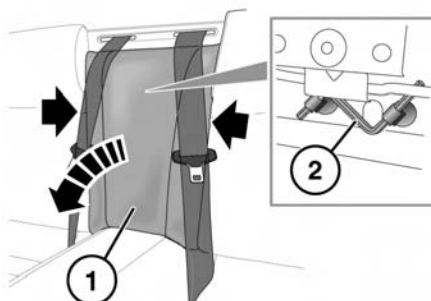


SJ1693

If the convertible roof ceases to operate while opening, it can stop in any of the positions shown (A, B or C). The convertible roof will require a manual re-set.

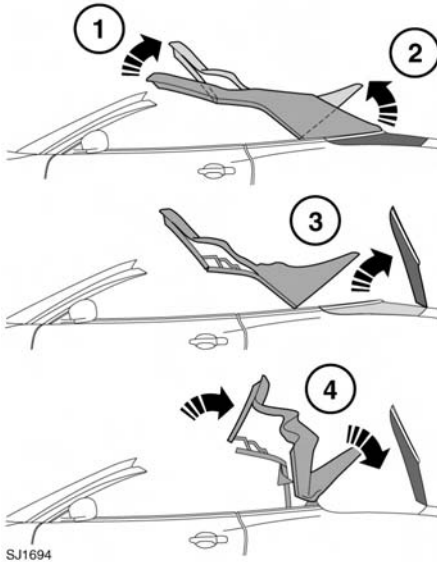
To manually re-set the convertible roof:

Ensure that the engine is not running and that the ignition is off.



SJ1692

- Remove the rear seat centre section (1) by grasping the sides of the section and pulling sharply. Locate and remove the allen key (2).
- From inside the luggage compartment, remove the vent screen (3) to access the convertible roof operating pump.
- Insert the allen key into the pump (4) and rotate anticlockwise (approximately one turn).



When the convertible roof has been re-set:

- Turn the allen key clockwise approximately one turn, remove the allen key and refit the vent screen.
- Stow the allen key and refit the rear seat centre section.
- Close the luggage compartment lid.
- Start the engine, press and hold the front of the convertible roof switch until the convertible roof is closed and latched.

If the convertible roof stops operating in position **A**:

- To release the tension in the convertible roof, lift the front (1) and rear (2) of the convertible roof.
- Lift the tonneau cover into the fully open position (3) and support.
- Fold the convertible roof into the fully stowed position (4).
- Rest the tonneau cover in the closed position.

If the convertible roof stops operating in position **B** or **C**:

- Lift the tonneau cover into the fully open position and support.
- Fold the convertible roof into the fully stowed position (4).
- Rest the tonneau cover in the closed position.