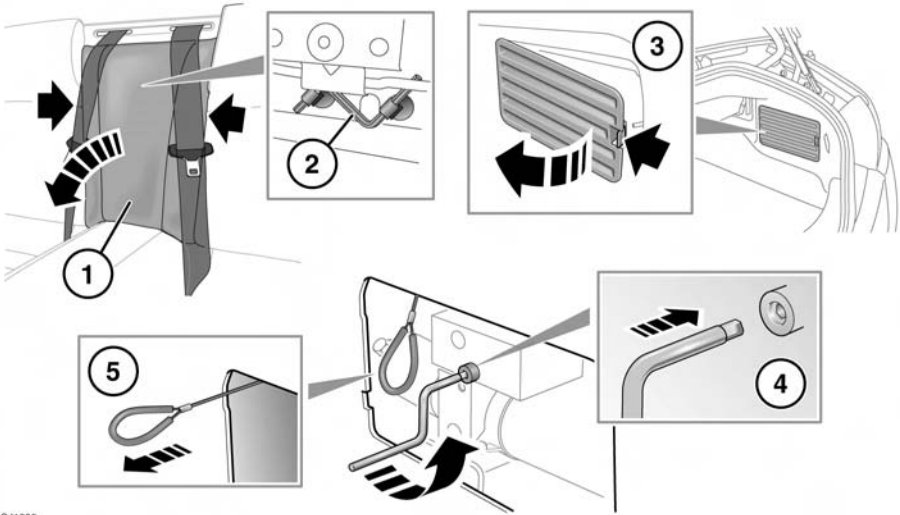


# Convertible roof

## MANUAL CLOSURE OF THE CONVERTIBLE ROOF

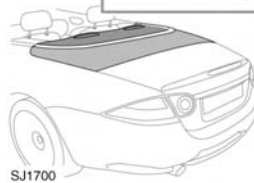
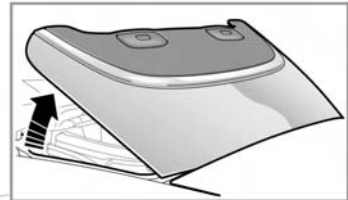


SJ1695

### To manually close the convertible roof:

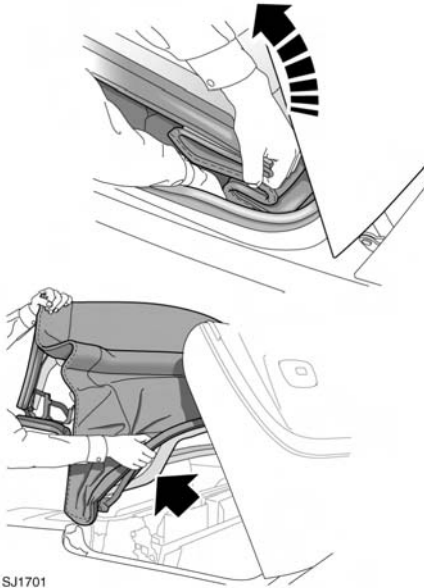
- Remove the rear seat centre section (1) by grasping the sides of the section and pulling sharply. Locate and remove the allen key (2).
- From inside the luggage compartment, remove the vent screen (3) to access the convertible roof operating pump.
- Insert the allen key into the pump (4) and rotate anticlockwise (approximately one turn).
- Pull the tonneau release cable until fully extended. Close the luggage compartment lid.

**Note:** The release cable is located behind the pump assembly.

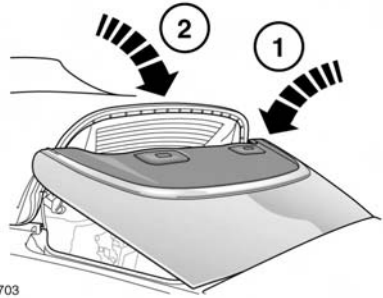


SJ1700

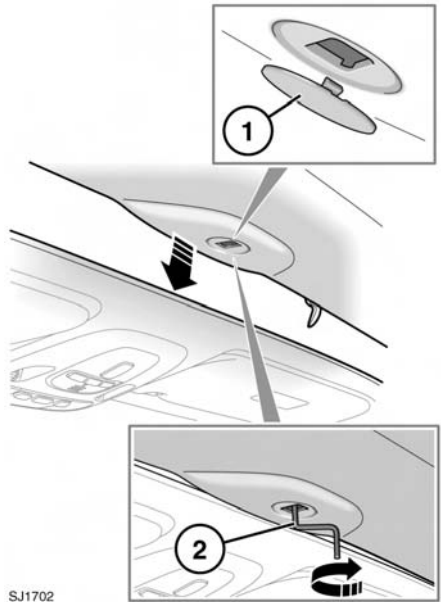
- Fully open the tonneau panel. It will self-support when fully open.



- From the left-hand side of the vehicle, place your right hand down the side of the folded convertible roof. Ensure that the bottom of the convertible roof, which includes the tension bow (arrowed), is securely held. Securely hold the convertible roof header assembly with your left hand. With both hands pull the whole of the convertible roof up and forward making sure that the tension bow is fully raised.



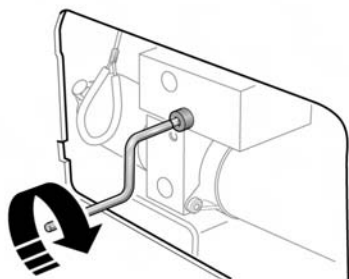
- Supporting the tension bow, lower the tonneau panel (1). Then lower the tension bow (2) onto the tonneau panel.



- Remove the plug from the convertible top header trim (1).
- Pull down and support the front header. Insert the allen key into the header panel key slot (2) and turn clockwise until the top is securely latched and resistance is felt.

# Convertible roof

- Remove the allen key and replace the plug in the header trim.



SJ1704

- In the luggage compartment, insert the allen key into the pump, turn clockwise approximately one turn.
- Remove the allen key and refit the vent screen. Stow the allen key and refit the rear seat centre section.