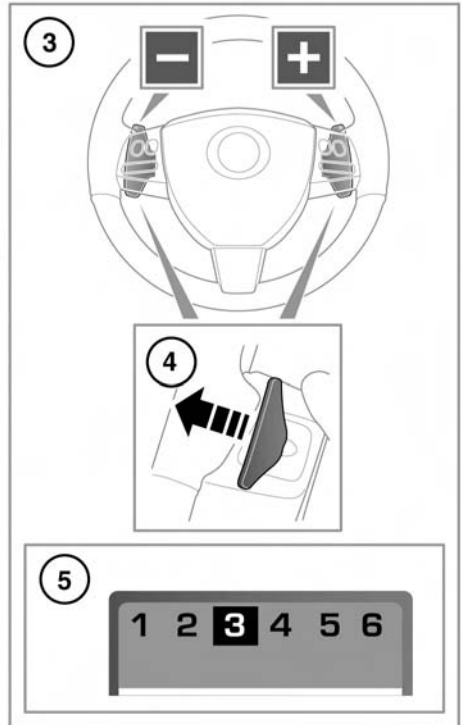
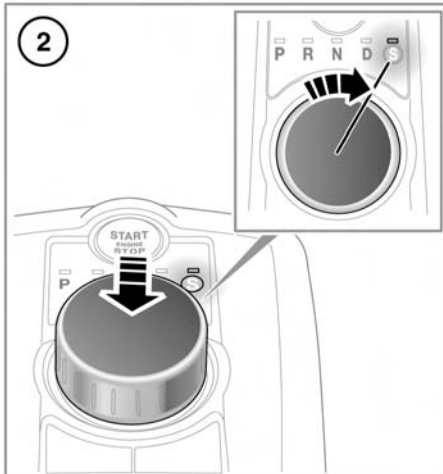
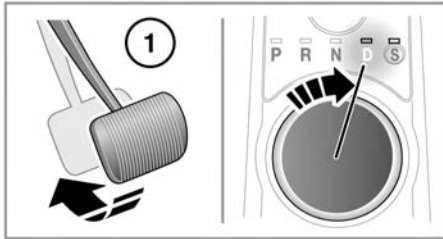


AUTOMATIC TRANSMISSION



SJ1341

1. To select drive (**D**) or reverse (**R**) gear, press the brake pedal and rotate the drive selector.
2. To select sport mode, from **D** press the drive selector down and rotate to **S**.
3. Gear shift paddles (left paddle for downshifts, right paddle for upshifts).
4. Pull briefly to change gear.

To exit manual mode, either pull and hold the shift-up paddle for approximately one second (to return directly to automatic operation in **D** or **S**), or if in **S**, rotate the gear selector to the **D** position.

5. Selected gear display when using manual gear selection.

- ⚠ Never select the Park (**P**) position whilst the vehicle is in motion.
- ⚠ Never select the Reverse (**R**) position whilst the vehicle is in forward motion.
- ⚠ Never select a forward gear whilst the vehicle is moving backwards.
- ⚠ Do not rev the engine or allow it to run above normal idle speed while selecting **D** or **R**, or while the vehicle is stationary with any gear selected.