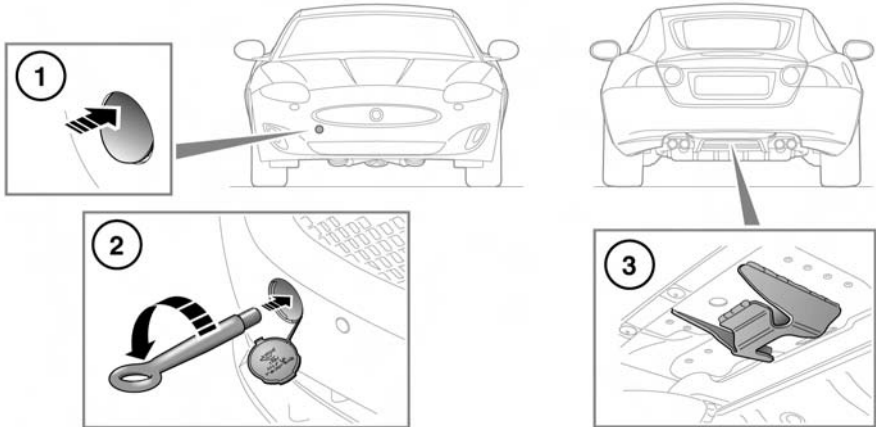


TOWING EYES



SJ1725



The towing eyes at the front and rear of the vehicle are designed for on-road recovery only.



Do not tow the vehicle on all four wheels.

The front towing eye is included in the tool kit, located in the luggage compartment, in the under-floor area or on the left-hand side under the trim panel.

1. Pop out the cover in the front bumper.
2. Locate the towing eye through the bumper and screw the towing eye anticlockwise into its fixing, until secure.
3. The rear towing eye is located in the centre of the vehicle, to the rear of the exhaust silencer.

Only use the rear towing eye when the vehicle is to be towed rearwards on straight level ground for the least amount of distance possible, or when loading onto a recovery vehicle.

TRANSPORTING THE VEHICLE



Only use over-wheel lashings. Use of any other lashing position may cause damage to the vehicle.



During vehicle recovery, to ensure the steering column remains unlocked, make sure the Smart Key remains in the vehicle, the rotary gear selector is in **N** (Neutral) and the ignition is on.

The recommended method for recovery/transportation of the vehicle, is on a transporter or trailer designed for that purpose.

Ensure that transportation is carried out by suitably qualified persons, and that the vehicle is secured correctly.