

Convertible roof

5. When the roof is fully open, the audible warning sounds again. The tonneau closing panel is fully automated and encloses the convertible top in the stowed position.
6. Release the overhead console switch.

Note: *If at any period during the convertible top opening sequence the switch is released, all movement of the convertible top will cease.*

CLOSING THE CONVERTIBLE ROOF

With the ignition on:

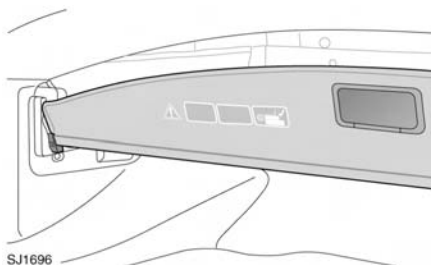
- Press and hold the front of the overhead console switch, see **59, OPENING THE CONVERTIBLE ROOF**. Do not release the switch until the convertible roof is fully closed and latched and, if required, the rear quarter windows and front door windows are fully closed.
- If the front windows are in any other position than fully down, they will retract to the fully down position on pressing the closure switch.
- When the roof is fully closed and latched, the rear quarter windows will close, followed by the front door windows returning to the fully closed position.

Note: *If at any period during the convertible top closure sequence, the switch is released, all movement of the convertible top will cease.*

LUGGAGE SEPARATOR

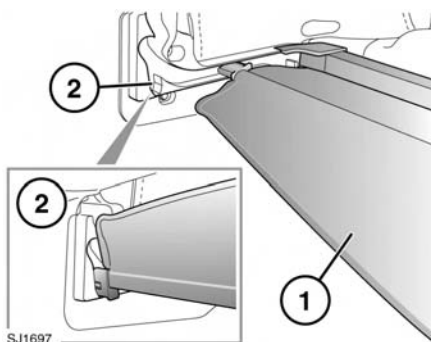
- ❗ Luggage items should not be placed forward of or on top of the luggage separator, as this could cause damage.
- ❗ Do not place large objects underneath the luggage separator partition when deployed as damage to the convertible roof may occur.

A luggage separator is located in the luggage compartment, to prevent items from moving into the area where the convertible roof is stowed.



When the convertible roof is closed, the normal position for the luggage separator is in the retracted position, with the partition positioned vertically (as shown).

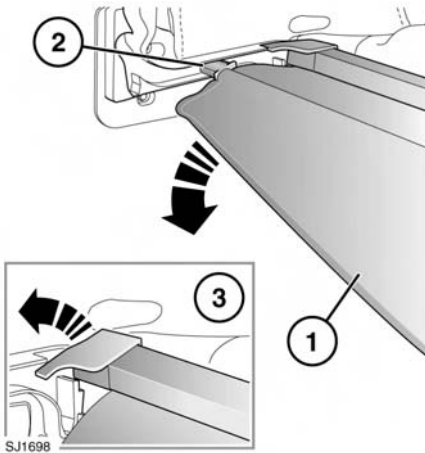
To deploy the luggage separator:



If the luggage separator is in the stowed position:

- Using the handle, slide the luggage separator (1) towards the rear of the vehicle until it stops.
- Lift the separator to the vertical position and drop into the lug slots (2) on both sides of the luggage separator.

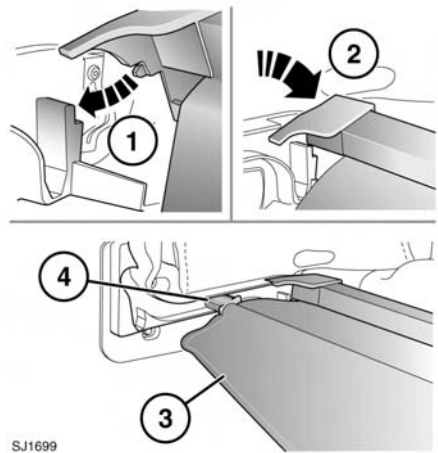
To remove the luggage separator:



With the luggage separator in the stowed position:

- Using the handle, slide the luggage separator (1) towards the rear of the vehicle.
- Disengage the lugs (2) by twisting the luggage separator.
- Holding the centre of the main body of the luggage separator, rotate upwards (3), disengaging the main body of the luggage separator from the support brackets.
- Remove the luggage separator.

To install the luggage separator:



With the luggage separator slightly extracted:

- Position the luggage separator over the support brackets.
- On both sides of the main body of the separator, locate the catches into the slots in the support bracket (1).
- Rotate the main body (2) until it sits down into the support bracket (checking that it is correctly seated on both sides).
- Twist the luggage separator (3) and locate the lugs into the sliders (4).