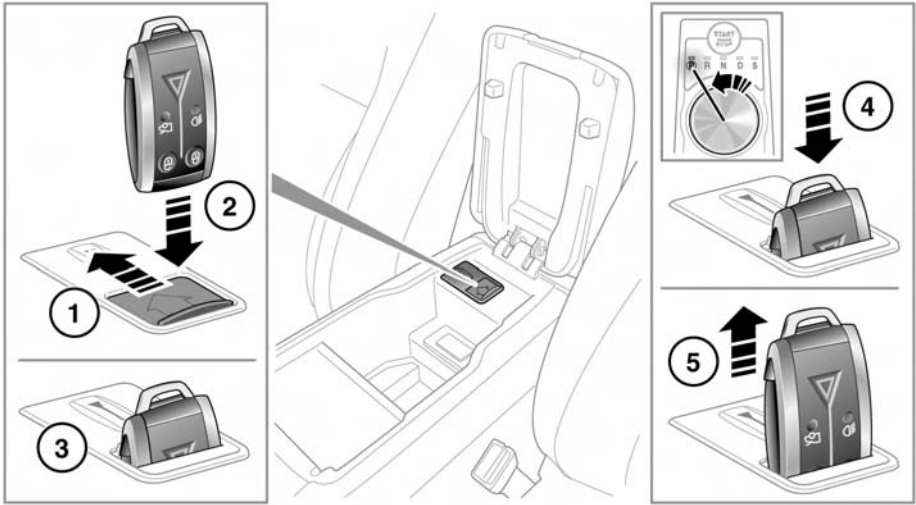


## KEYLESS START BACKUP

If the vehicle has been unlocked using the emergency key blade or the Smart Key is not detected by the vehicle, it will be necessary to use the keyless start backup to disarm the alarm and start the engine.

**Note:** If the Jaguar Smart Key is placed in the door pocket, it may be outside the range of the sensors when the door is open



SJ1317

If the Smart Key fails to operate, **Smart Key Not Found- Refer to Handbook** is displayed in the message centre. To start the engine it will be necessary to dock the Smart Key, as follows:

1. Lift the lid on the centre console stowage compartment. Slide open the cover of the starter control unit.
2. Insert the Smart Key fully into the starter control unit, as shown.

**Note:** When docking the Smart Key, it is recommended that the emergency key blade is left in place. The end of the blade can then be used as a handle, to pull the Smart Key from the control unit when undocking.

3. Ensure the Smart Key is securely docked, then press and release the START/STOP button with the brake pedal applied to start the engine.
4. To undock the smart key, ensure that the gear selector is in the **P** position and the ignition is switched off, then press and release the Smart Key. The Smart Key will eject from the starter control unit.



Ensure that the ignition is switched off before undocking the Smart Key, otherwise damage to the Smart Key may occur.

5. Remove the Smart Key.

If the engine still fails to start, seek qualified assistance.