




# Garage door opener

## GARAGE DOOR TRANSCEIVER

-  **Do not use the transceiver with any garage door opener that lacks the safety stop and reverse feature as required by safety standards.**
-  **When programming the transceiver to a garage door opener or entry gate, ensure the area is clear. This will prevent potential harm or damage as the gate or garage door will activate during the programme.**
-  This device may suffer from interference if operated in the vicinity of a mobile or fixed station transmitter. This interference is likely to affect the hand-held transmitter as well as the in-car transceiver.


The door transceiver is located in roof console. It can be programmed to transmit the radio frequencies of up to 3 different transmitters, which can be used to operate garage doors, entry gates, home lighting, security systems or other radio frequency operated devices.

Although this section mainly describes the procedures for a garage door opener, it equally applies to the previously mentioned applications.

In some countries, this feature is also known as the HomeLink® Universal Transceiver.

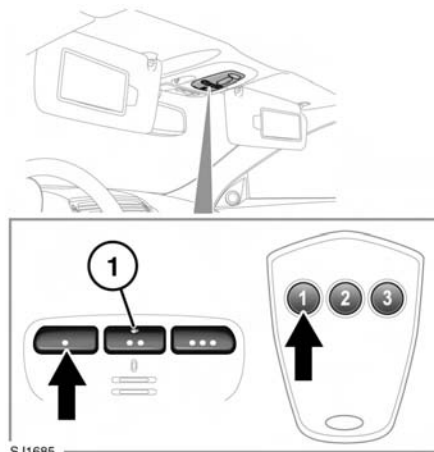
For further information, see **42, INFORMATION AND ASSISTANCE.**

## BEFORE PROGRAMMING

-  When programming a device that may require you to press and re-press the hand-held transmitter (cycle), unplug the device during the cycling process to prevent possible motor failure.

For best results, fit a new battery to the hand-held transmitter of the garage door opener (or other device) before programming. If your garage door opener receiver (located in the garage) is equipped with an antenna, ensure that the antenna is hanging straight down.

## PROGRAMMING



Ensuring that the engine is switched off:

1. Ensure that the ignition system is on.
2. Hold the end of the original garage door opener hand-held transmitter 50 to 150 mm (2 to 6 inches) away from the transceiver in the roof console, keeping the indicator lamp (1) in view.
3. Using both hands, simultaneously press and hold both the chosen transceiver