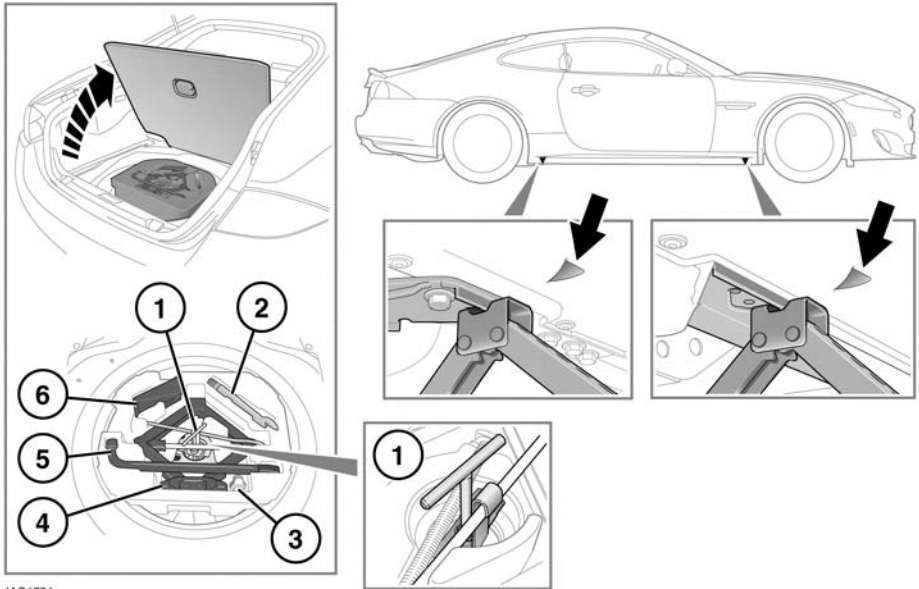


WHEEL CHANGING



JAG1724

⚠ WARNING - THAT NO PERSON SHOULD PLACE ANY PORTION OF THEIR BODY UNDER A VEHICLE THAT IS SUPPORTED BY A JACK.

Before raising the vehicle slacken but do not remove the wheel nuts.

1. Spare wheel retaining T-bar.
2. Towing eye.
3. Locking wheel nut adaptor.
4. Jack. Observe the instructions printed on the jack.
5. Wheel brace.
6. Wheel chock.

Note: On vehicles that only have a tyre repair kit the tool kit is located on the left-hand side of the luggage compartment beneath the carpet.

To remove the spare wheel, unscrew and remove the T-bar (1) through the centre of the tool tray. Remove the tool tray.

There are four jacking points on the underside of the floor. Two indented, triangular indicators are provided on each sill cover. These indicate the location for the jack.

Carefully raise the vehicle by turning the jack handle. Stop jacking the vehicle when the tyre just clears the ground. Minimum tyre lift gives maximum vehicle stability.

Fit the spare wheel and loosely secure with the wheel nuts.

Note: To remove the centre badge use the plastic tipped end of the wheel nut wrench handle, push the centre badge from its housing from the inside of the wheel.