



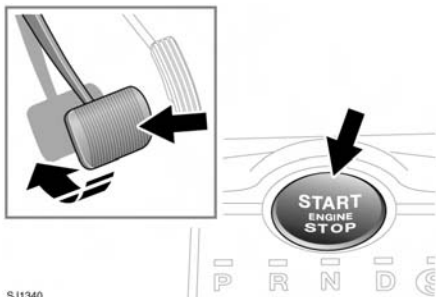
Starting the engine

STARTING A PETROL ENGINE

 **Never start the engine, or leave it running, when the vehicle is in an enclosed space. Exhaust gasses are poisonous and can cause unconsciousness and death if inhaled.**

 If the engine fails to start, do not continue cranking as this will discharge the battery. It may also damage the catalytic convertor due to unburnt fuel passing through the exhaust.

Note: The Smart Key may not be detected if it is placed within a metal container or if it is shielded by a device with a back-lit LCD screen, such as a smart phone, laptop (including laptop bag), games console etc. Keep the Smart Key clear of such devices when attempting Keyless entry or Keyless starting.



SJ1340


To start the engine:

1. Ensure that a valid Smart Key is inside the vehicle.
2. Ensure that Park (P) or Neutral (N) is selected.
3. Firmly press the brake pedal.
4. Press and release the engine **START/STOP** button.

Once the engine has started, the brake pedal can be released if it is safe to do so.

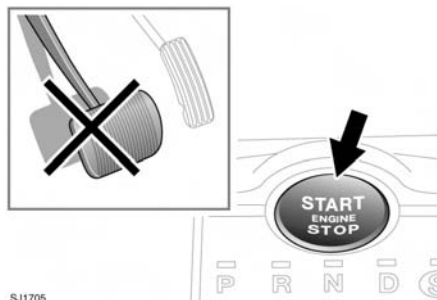
Note: If, during the start procedure, the brake pedal is released, a gear change is made or if a fault occurs, **Smart Start cancelled** is displayed in the message centre and the start procedure is cancelled.

SWITCHING OFF THE ENGINE

 **Never stop the engine while the vehicle is in motion.**

1. Ensure that the vehicle is parked with Park (P) selected and the parking brake applied.
2. Press and release the engine **START/STOP** button.


SWITCHING ON THE IGNITION



SJ1705

To switch on the ignition without starting the engine.

1. Ensure the brake pedal is not depressed and that a valid Smart Key is inside the vehicle.
2. Press and hold the engine **START/STOP** button until the warning lamps illuminate.
3. Release the engine **START/STOP** button.

 If the brake pedal is applied when the **START/STOP** button is pressed, the engine will start.