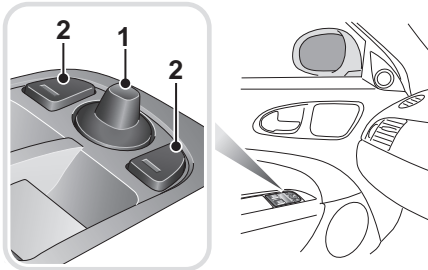


EXTERIOR MIRRORS



JAG1694

Both door mirrors are adjusted from the driver's door control panel.

The four-way adjustment button (1) moves the mirrors to the required position. The selector button (2) selects the mirror to be adjusted.

Note: *Dependent on market requirements, both exterior mirrors are convex, providing a wider field of vision. As a result, objects viewed in the mirrors are closer than they appear.*

The mirror housings are designed to pivot against the vehicle upon impact. If this should occur, reposition powerfold mirrors using the door switch buttons.

Mirror heating

CAUTION



Do not use a scraper to remove ice from the mirrors as this will damage the surface.

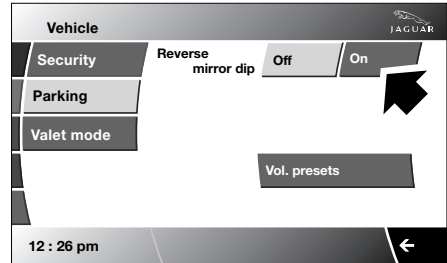
The door mirrors have heating elements which operate automatically based on the external ambient temperature of the vehicle. The mirror heater will clear all ice from the mirror surface.

Mirror dip when reversing

Reverse mirror dipping is selected via the touch-screen.

From the main Home menu, select **Vehicle**:

- Select **Veh. settings**.
- The **Security** screen is selected automatically as the default.



E91195

- Select **Parking**.
- Select **Reverse mirror dip On**.

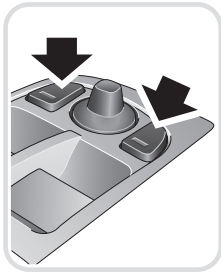
When reverse gear is selected, the passenger mirror inclines downwards to provide a close up view of the rear side area. When the gear selector is moved out of reverse, the mirror will return to its original position.

The reverse mirror dip alignment can be adjusted by using the four-way adjustment button (1) when the mirror has completed movement to its reverse dip position. This new selected position is maintained until re-adjusted.

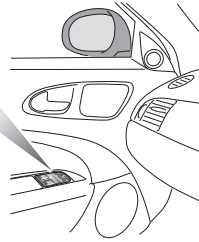
Note: *When reversing, if a speed of greater than 7 km/h (4 mph) is achieved, then the mirrors will revert to the previous position. However, if the speed is then reduced to below 7 km/h (4 mph), then the mirrors will revert to the dipped position.*

Windows and mirrors

Mirror powerfold



JAG1695



WARNING



Do not drive the vehicle with the door mirror in the folded position, except when parking.

To assist parking by reducing the overall vehicle width, a selectable facility enables the door mirrors to be folded back.

To fold the mirrors, press both left and right-hand mirror selector buttons at the same time. The mirrors automatically stop in the fully folded position. Press both buttons again to unfold the mirrors.

Powerfold and unfold can be cancelled by pressing both mirror selector buttons again, while the mirrors are folding/unfolding.

Note: If the button is pressed repeatedly, a thermal cut-out will prevent damage to the vehicle's electronics. If this occurs, wait for five minutes for the cut-out to reset, before operating the button.

Note: If the thermal cut-out operates and leaves the mirrors in the folded position, the mirrors can be folded outwards manually.

Note: If the door mirrors are repositioned manually (or knocked out of position), the mirror head will be loose. To re-engage the mechanism, power the mirror to the foldback position, then outwards to the drive position.

Note: Mirror foldback will only activate when the vehicle is stationary or travelling at 20 km/h (12 mph) or less.

Note: The door mirrors will not unfold automatically when the Jaguar Smart Key unlock button is pressed, if they have been folded via the door mirror switches.

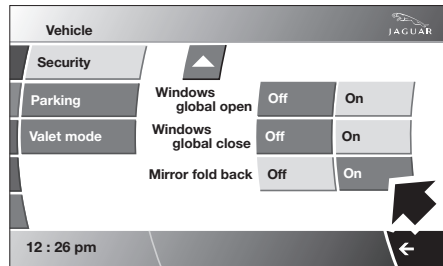
Automatic powerfold

The mirrors can be configured to automatically fold when the vehicle is locked and unfold when unlocked.

Note: If the mirrors were folded using the switches, they will not unfold automatically when the vehicle is unlocked.

To select automatic mirror powerfold via the touch-screen:

From the main Home menu, select **Vehicle**:



JAG1422

- Select **Veh. settings**.
- The **Security** screen is selected automatically as the default.
- Select **Mirror fold back On** or **Off**.