

PORTABLE MEDIA CONNECTIONS

Portable media devices can be connected to the front media hub located in the cubby box and the rear media hub located in the rear centre armrest. Compatible portable devices include:

- USB mass storage devices (e.g. a memory stick). Devices must use FAT or FAT32 file format.
- iPod (iPod Classic, iPod Touch, iPhone and iPod Nano are supported - full functionality for older devices cannot be guaranteed). iPod Shuffle functionality cannot be guaranteed.
- Auxiliary device (personal audio, MP3 players, all iPods).

Note: *Auxiliary devices have no touch screen control.*

- Auxiliary device connected with a composite audio/video connection.

Note: *Auxiliary devices have no touch screen control.*

- Devices with Bluetooth® connectivity. Devices must support A2DP and AVRCP Bluetooth® protocols).

If you are connecting an iPod, mass storage or Bluetooth® device, use the touch screen to operate and search the device. Many of the controls are similar to those available for CD play.



Please disconnect your iPod when leaving the vehicle. Failure to do so may result in the iPod battery discharging.

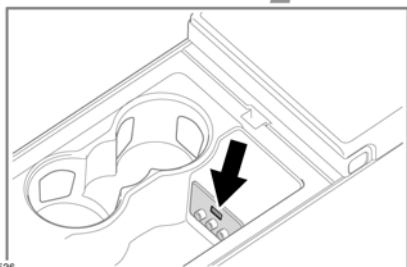
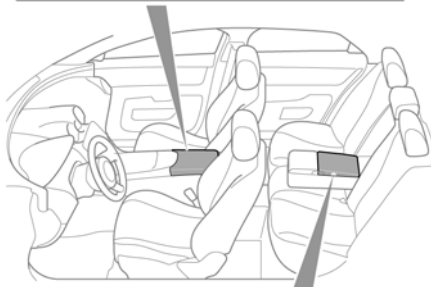
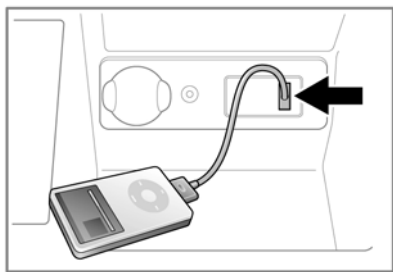
Note: *The audio system will play MP3, WMA and AAC files.*

To maximise playback quality, it is recommended that lossless compression is used for the iPod. If files on the iPod or USB are compressed it is recommended that the files utilise a minimum bitrate of 192 kbit/s (although a higher bitrate is strongly recommended).

Note: *Some MP3 players have their own file system that is not supported by this system. To use your MP3 player, you must set it to USB Removable Device or Mass Storage Device mode. Only music that has been added to the device in this mode can be played.*

Portable media

CONNECTING A DEVICE



SJ1536

Connect the device into the appropriate socket in the cubby box or rear centre armrest.

Note: Use the cable supplied with your media device to connect to the USB socket.

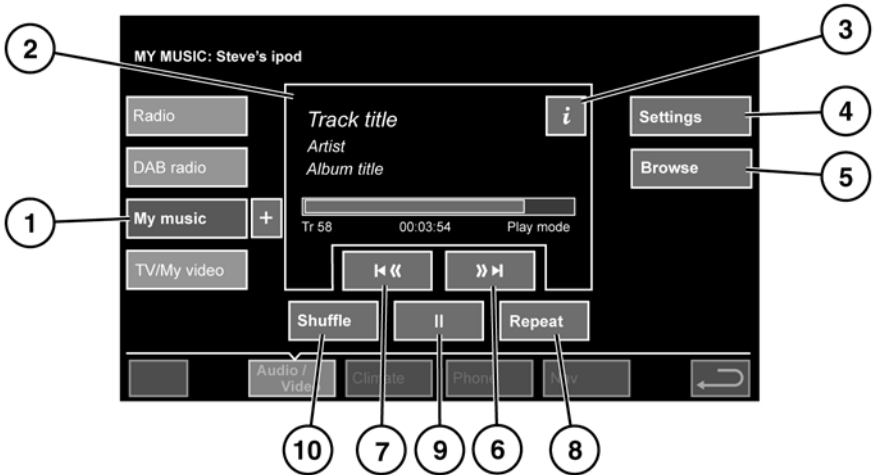
- On the touch screen Home menu, select **Audio/Video**. Then select **My music**.
- Select the required device (**iPod**, **USB**, **Bluetooth** or **AUX**). Playback will start and the playback control menu is displayed.

Note: You can also press the **MODE** button repeatedly to select the chosen device.

When an iPod is connected, playback will continue from the point at which it was last playing, provided the iPod battery is in a good state of charge.

When a USB device is connected, playback will start from the first track in the first available folder. If a device is already connected when My music is selected, playback will continue from the point at which it was last playing.

CONTROLS



SJ1085

1. Touch to select the type of portable media device (**iPod, USB, Bluetooth** or **AUX**). Selection of CD playback is also made from this menu.
2. Display of information about the current track, including elapsed run-time. Some of this information is also displayed in the instrument panel.
3. Select to view more detailed information about the current track.
4. Select to switch traffic and news announcements on or off.
Additionally, for USB devices, you can select the number of list entries that are skipped when you use the page up/down arrows when navigating a list.
5. Browse (iPod/USB only):
 - Select to view the contents of the connected device which are displayed as dictated by the file structure.
 - Select a file to start playback (Browse view will remain). Select a folder or sub-folder to view their contents.
 - To return to the Controls menu, select the Back soft key.
6. Skip/Scan forward:
 - Touch and release to skip to the next track.
 - Touch and hold to scan forwards through the current track. Playback will resume when the soft key is released.
7. Skip/Scan backward:
 - Touch and release within 3 seconds of track playback to skip to the previous track.
 - Touch and release after 3 seconds of track playback to skip to the beginning of the current track.
 - Touch and hold to scan backwards through the current track. Playback will resume when the soft key is released.

8. Repeat:

- Select to repeat the current folder (USB) or repeat playlist (iPod).
- Select again to cancel Repeat mode.

Note: Repeat mode is not available for Bluetooth® devices.

Note: Selecting **Shuffle** (10) will cancel Repeat mode.

9. Pause/Play: Select to pause playback. Select again to resume playback.

10. Shuffle:

- Select once to play random tracks in the current folder (USB) or playlist (iPod). **Shuffle folder** or **Shuffle playlist** is displayed.
- Select again to play random tracks from all folders (USB). **Shuffle all** is displayed.
- Select again to cancel Shuffle mode.

Note: Shuffle mode is not available for Bluetooth® devices.

PLAYING A PORTABLE DEVICE

If you are using a USB mass storage device or approved iPod, you can control playback using the touch screen controls.

If you are using a Bluetooth® device, you can control playback using the touch screen, but some controls are unavailable.

If you are using any portable media device via the AUX socket, then you must control playback from the device itself.

CONNECTING MULTIPLE DEVICES



Do not plug non-audio devices into the USB port.

You can connect multiple devices simultaneously to the portable media interface and switch between them using the touch screen. Select **iPod**, **USB**, **Bluetooth** or **AUX**, to switch between modes.

The device docked first will remain the active device until you choose to change.

If, after changing to the newly-docked device, you change back to the first device, play will resume at the point you left it (USB and iPod only).

Note: You cannot use a USB hub to connect more than one USB device to the audio unit.

Note: Devices connected to the iPod and USB ports will be charged, but devices that are fully discharged will not play.

Note: Options such as **Repeat** and **Shuffle** relate to the device currently playing, they will not apply to any subsequent device.

PAIRING AND CONNECTING A BLUETOOTH® DEVICE USING THE TOUCH SCREEN

For further information on Bluetooth®, see **116, BLUETOOTH® INFORMATION**.

1. Switch on your media player's Bluetooth® connection, using the media player's menu. Make sure that your media player is in Bluetooth® 'discoverable' mode, sometimes referred to as 'find me' mode (see your media player's operating instructions for more information).
2. Switch on the ignition and ensure the touch screen is active.
3. From the My music menu, select **Bluetooth**, then select **Search new**.

4. Identify your media player from the displayed list and select the corresponding **Pair and connect** option.
5. When prompted, enter the 4-digit code into your media player (see your media player's operating instructions for more information).
6. Once your media player is paired and connected to the system, a confirmation message will be displayed, before the control screen is shown.

Note: *Due to the duration of a Bluetooth® search, it is advised that the timeout to home screen feature is switched off before attempting to search for Bluetooth® devices. This setting can be changed within **Vehicle, Syst. settings, Display set.***

PAIRING AND CONNECTING USING YOUR MEDIA PLAYER

For further information on Bluetooth®, see **116, BLUETOOTH® INFORMATION.**

Note: *The process of pairing and connecting your media player with the vehicle using the media device will vary depending on the type of media player.*

1. Switch on the ignition and ensure the touch screen is active.
2. From the My music menu, select **Bluetooth**, then select **Use device.**
Note: *The vehicle's Bluetooth® system is only discoverable for 3 minutes.*
3. Using the media player, search for Bluetooth® devices. On some media players this is referred to as new paired device. See your media player's operating instructions for further information.

4. When the vehicle's Bluetooth® system is discovered (named Jaguar XJ), follow the on-screen instructions. Select **Yes** when prompted, to confirm the pairing.
5. When prompted, enter the Bluetooth® PIN (Personal Identification Number) and select **OK** to confirm.

Note: *The vehicle's Bluetooth® PIN must be the same number as entered on the media player.*

6. Once your media player is paired and connected to the system, a confirmation message will be displayed, before the control screen is shown.

Note: *Some media players do not automatically connect and need to be manually connected, via the device or by using the **Change device** option.*

AUTOMATIC RECONNECTION

If devices have already been paired and connected, when Bluetooth is selected from the My music menu, the system will automatically connect to the last used device (a confirmation pop-up appears). If the last used device is not present, then the system will search for other previously connected devices and automatically connect if one is found.

If no previously connected device is found, **No device connected** is displayed and the **Search new, Change device** and **Use device** options are given.

LOSS OF CONNECTION

If a loss of connection between the vehicle and the Bluetooth device occurs, a pop-up is displayed. Select **Reconnect** to automatically restore the connection. A confirmation pop-up will appear before the touch screen reverts to its previous mode.

CHANGING/DISCONNECTING A DEVICE

- From the playback control menu, select **Settings**.
- From the Settings menu, select **Register**.
- Select **Disconnect**. A confirmation pop-up will appear and then you will be given the option to **Search new**, **Change device** or **Use device** to connect to a different device.