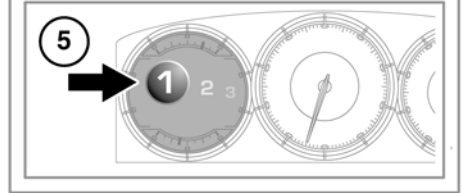
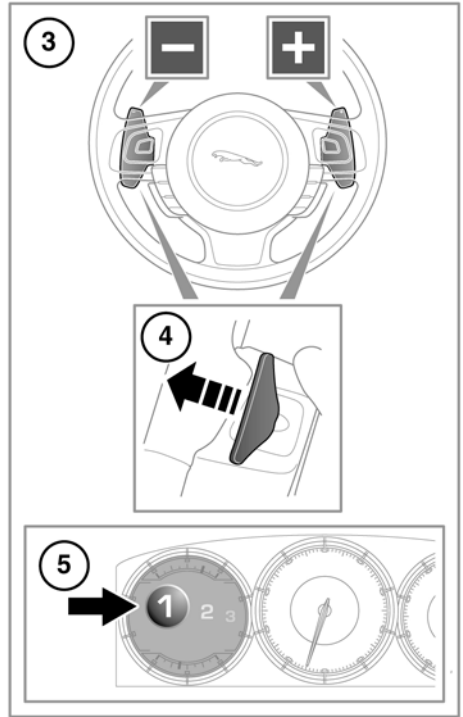
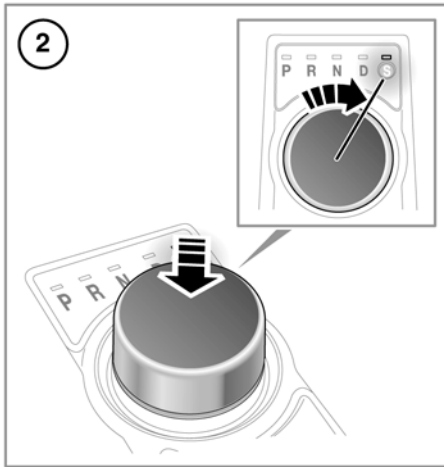
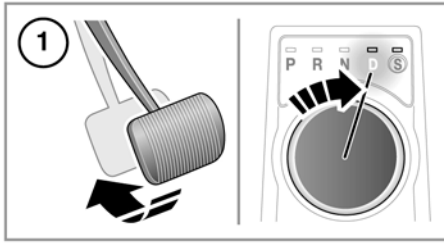


AUTOMATIC TRANSMISSION



SJ1031

1. To select drive or reverse gear, press the brake pedal and rotate the drive selector.

2. To select sport mode, from **D** press the drive selector down and rotate to **S**.

3. Gear shift paddles (left paddle for downshifts, right paddle for upshifts).

4. Pull briefly to change gear.

To exit manual mode, either pull and hold the shift-up paddle for approximately one second (to return directly to automatic operation in **D** or **S**) or, if in **S**, rotate the gear selector to the **D** position.


5. Selected gear display when using manual gear selection.

⚠ Never select the Park (**P**) position whilst the vehicle is in motion.

⚠ Never select the Reverse (**R**) position whilst the vehicle is in forward motion.

⚠ Never select a forward gear whilst the vehicle is moving backwards.

⚠ Do not rev the engine or allow it to run above normal idle speed while selecting **D** or **R**, or while the vehicle is stationary with any gear selected.

 Do not allow the vehicle to remain stationary with a drive gear selected and the engine running. Always select **P** or **N** if the engine is to idle for a prolonged period.

JAGUARDRIVE SELECTOR

The JaguarDrive selector elevates out of the centre console when the engine is started, in readiness for gear selection

P should be selected before switching off the engine. However, it is possible to switch the engine off with **R**, **D** or **S** selected - the selector will automatically select **P**, while retracting into the centre console.

Note: *If the engine is switched off with **N** selected, the system will wait for 10 minutes before selecting **P**. This procedure is to allow the vehicle to be conveyed through a car wash only and should not be used for vehicle recovery purposes.*

To prevent the transmission from automatically selecting **P** (e.g. for vehicle recovery purposes) it is necessary to activate the Emergency Park Release. Vehicle recovery should only be undertaken by qualified personnel.

IF THE SELECTOR FAILS TO ELEVATE

If the JaguarDrive selector is obstructed remove the obstruction and then start the engine. The selector should elevate as normal.

If the selector still fails to elevate, even if there is no obstruction, a fault in the system is indicated. The selector can still be used in the lowered position, but be aware that it will not automatically select **P** when the engine is switched off. **P** should be selected manually. The fault should be rectified by a Dealer/ Authorised Repairer at the earliest opportunity.

TEMPORARY MANUAL GEAR SELECTION

When the gear selector is in the **D** position, manual mode may be directly accessed by the single action of operating the steering wheel mounted shift paddles.

If continued use of manual mode is required, the gear selector may be subsequently moved to the **S** position to enter permanent manual mode.

If the gear selector remains in the **D** position, temporary manual mode will be held whilst the driver is accelerating, decelerating, cornering or continuing to request shifts via the paddles.

LIMP-HOME MODE

Note: *The driver should be aware that the vehicle's performance will be reduced and must take this into account when driving. Also the use of the **Jaguar Sequential Shift** paddles will be disabled. In this event, seek qualified assistance as soon as possible.*

In the event of an electrical or mechanical failure, transmission operation will be limited. **P**, **R**, **N**, **D** and **S** may still be used to enable the vehicle to be driven to a safe area.

Some faults will cause the selector to be locked in position until the ignition is switched off. If the selected range flashes, it signifies that the driver request cannot be engaged. Re-select **N** and repeat the attempt.

If the transmission is still unable to select the requested gear, contact your Dealer/ Authorised Repairer.