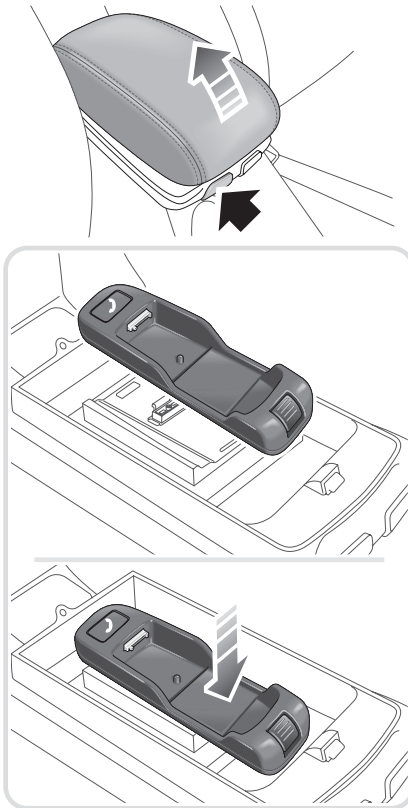


Phone Docking Cradle - X-Type

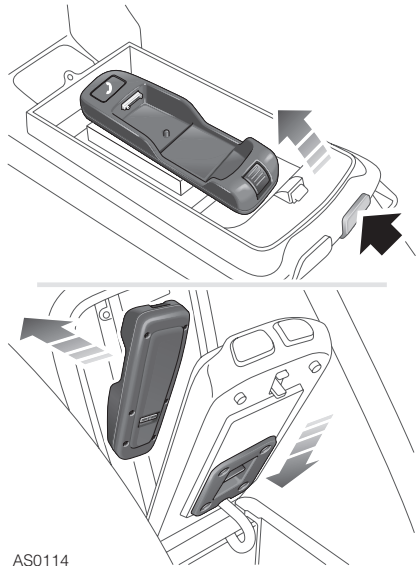
FITTING THE DOCKING CRADLE



AS0113

1. Lift the top of the cubby box.
2. Align the connector on the docking cradle with the one on the base plate.
3. Push the docking cradle onto the base plate. A 'click' will be heard to indicate that the docking cradle is secured to the base plate.
4. Lower the top of the cubby box.

REMOVING THE DOCKING CRADLE



AS0114

1. Open the upper and lower portions of the cubby box.
2. Press the release button to release the cradle.
3. Pull the docking cradle from the base plate to remove.
4. Close the upper and lower portions of the cubby box.