

Convertible top

OPENING THE CONVERTIBLE TOP

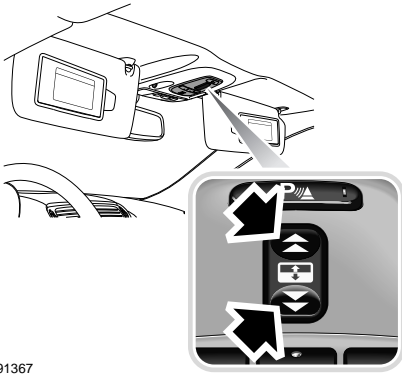
WARNINGS



Before opening or closing the convertible top, ensure that all occupants have moved their hands, fingers, hair, etc. clear of moving parts.



Do not place items on the tonneau panel or over the Rollover Protection Device covers.



E91367

The power operated convertible top and rear quarter windows, are controlled by the switch located on the overhead console. See **ELECTRIC WINDOWS** (page 81). The ignition system must be on. The top will latch and unlatch automatically.

The top can be operated at speeds below 24 km/h (15 mph). However, for safety it should not be opened or closed when the vehicle is being driven.

CAUTIONS



The convertible top will not operate unless the luggage separator is correctly located in the deployed position in the luggage compartment and that the luggage compartment lid is firmly closed.

CAUTIONS



Check that there is nothing in the rear area which could interfere with the top when folding down, e.g. ensure that the battery cover trim is fitted and secure.



Do not attempt to operate the convertible top at temperatures below -15°C (5°F). This may cause damage to the fabric.



If the convertible top is operated above 24 km/h (15 mph), there is a risk of damage to the convertible top.



Do not attempt to open the convertible top manually, as damage to the linkage mechanism may occur.

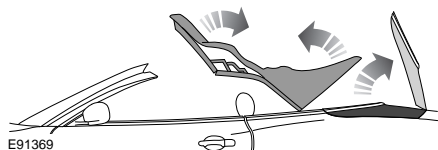
1. Ensure that the ignition is on.
2. Ensure that the luggage separator in the luggage compartment is in the fully deployed position. If it is not positioned correctly the proximity switches will not operate and the convertible top will not open.



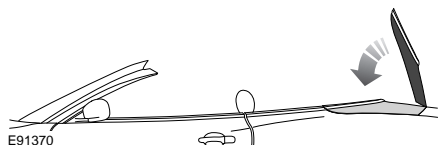
E91368

3. Press and hold the rear of the overhead console switch. (Do not release the switch until the top is fully open).

Convertible top



4. The rear quarter windows open, an audible warning sounds and the top unlatches and starts to move. The tonneau closing panel opens (the front windows will fully open. The door window switch will require to be pressed to close the windows).



5. When the top is fully open, the audible warning sounds again. The tonneau closing panel is fully automated and encloses the convertible top in the stowed position.
6. Release the overhead console switch.

Note: *If at any period during the convertible top opening sequence the switch is released, all movement of the convertible top will cease.*

CAUTION

- ⚠ Do not at any time during the opening or closing of the convertible top, press the engine START/STOP button, as all movement will cease and the convertible top will have to be manually re-set.

Convertible top manual re-set

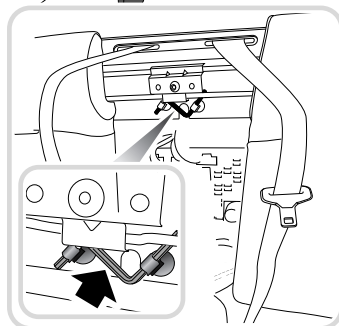
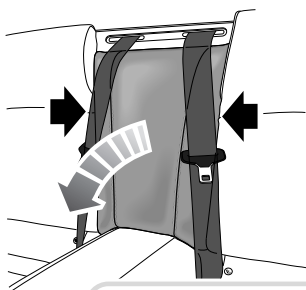
WARNING



It is advisable that two persons carry out this procedure, so that the convertible top and tonneau cover are fully supported when required; although it is possible that this procedure may be carried out by one person with care.

To manually re-set the convertible top:

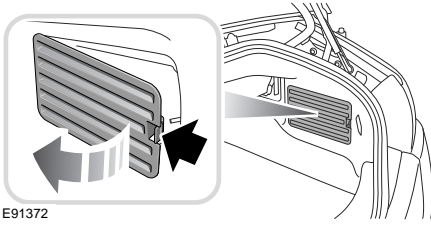
Ensure that the engine is not running and that the ignition is off.



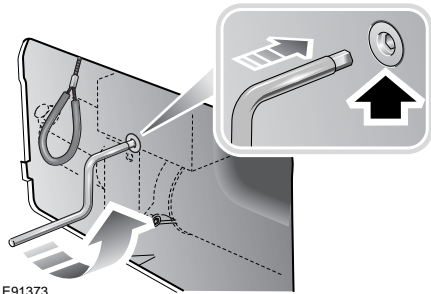
E91371

Remove the Allen key from its stowed position, behind the rear seat centre section, by grasping the sides of the section, as shown, and pulling sharply.

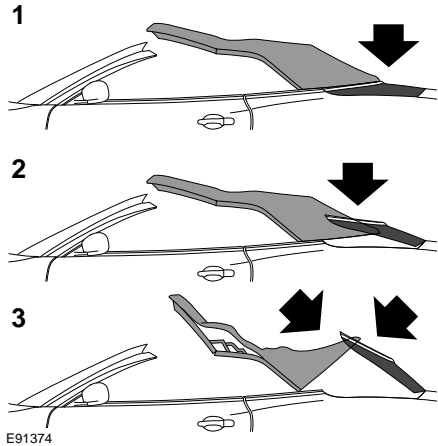
Convertible top



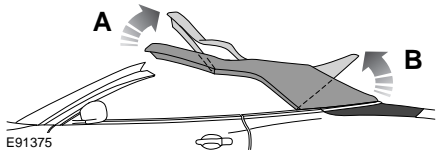
From inside the luggage compartment, remove the vent screen to access the convertible top operating pump.



Insert the Allen key into the pump and rotate counterclockwise (approximately one turn).



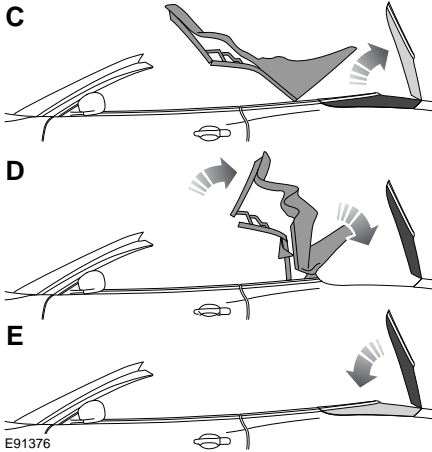
The convertible top and tonneau cover movement can cease in any of the positions **1**, **2** or **3**, as shown.



If the movement ceases in position **1**, release the tension in the convertible top cover and tension bow (rear of convertible top) by lifting the front of the convertible top and pulling rearwards **A**.

Lift the tension bow upwards **B**, and forwards to clear the tonneau cover.

Convertible top



Lift the tonneau cover fully and support (C). Pull the convertible top rearwards and downwards (D) so that it is fully stowed.

Rest the tonneau cover in the closed position (E).

If the movement ceases in either positions 2 or 3, lift the tonneau cover fully upright and support (C), pull the front of the convertible top rearwards and downwards so that it is fully stowed (D).

Rest the tonneau cover in the closed position (E).

All positions: Once the convertible top has been reset, turn the Allen key clockwise approximately one turn and return it to its stowed position, refit the rear seat centre section, luggage compartment vent screen and close the luggage compartment lid.

Switch on the ignition and start the engine. Press and hold the front of the convertible top switch until the convertible top is closed and fully latched.

If the convertible top requires to be open, press and hold the rear of the switch.

Preparation for winter

Before the onset of winter, it is advisable to coat the convertible top seals and respective body seals with a compound, such as Carbaflo KSP 105, to aid operation in freezing conditions.

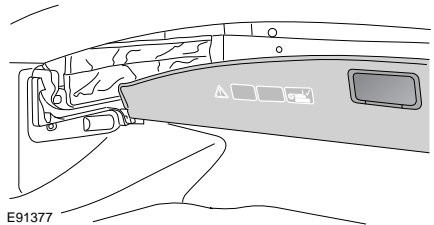
This action will need to be repeated at the start of each winter to maintain protection.

Care must be taken so that the compound does not come into contact with the convertible top material. For further advice you should contact your Jaguar Dealer/Authorised Repairer.

Luggage separator

CAUTION

⚠ Luggage items should not be placed forward of or on top of the luggage separator, as this could cause damage.




A luggage separator is located in the luggage compartment, to prevent items from moving into the area where the convertible top is stowed.

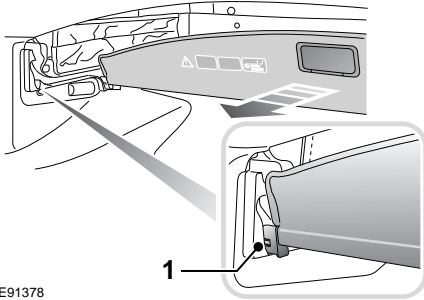
When the convertible top is closed, the normal position for the luggage separator is in the retracted position, with the partition positioned vertically.

Convertible top

To deploy the luggage separator

CAUTION

 Do not place large objects underneath the luggage separator partition when deployed as damage to the convertible top may occur.

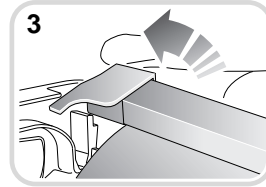
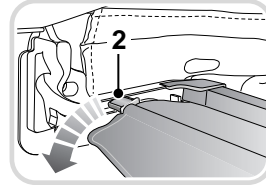
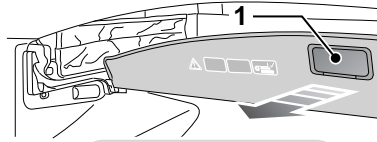


E91378

Pull the handle on the luggage separator towards you. There is a lug on either side of the luggage separator: slide the lugs into the sliders on either side of the luggage compartment. The luggage separator will positively locate in the vertical position. A proximity switch (1) is located in the separator assembly, so that the convertible top will not open and retract until the separator is in the fully deployed position.

When selected, if the convertible top does not open, check that the positioning of the luggage separator is correct and ensure that the luggage compartment lid is firmly closed.

To remove the luggage separator



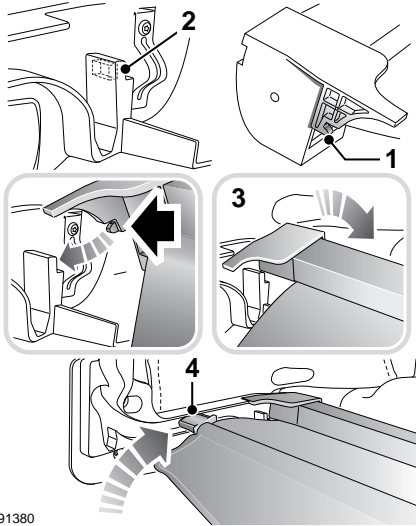
E91379

With the luggage separator in the stowed position, pull the handle towards you (1) and disengage the lugs from the sliders (2).

Holding the centre of the main body of the luggage separator, rotate upwards (3), disengaging the main body of the luggage separator from the support brackets. Remove the luggage separator and retract the withdrawn partition section of the luggage separator into the main body.

Convertible top

To install the luggage separator



E91380

With the partition slightly extracted, position the luggage separator up to the support brackets, with the front edge raised. Ensuring that for both sides, the catch (1) will engage in the locating slot (2), rotate the main body of the luggage separator (3), so that it sits down into the support brackets. Fit the partition lugs into the sliders (4) and retract the luggage separator partition into the normal stowage position.

CLOSING THE CONVERTIBLE TOP

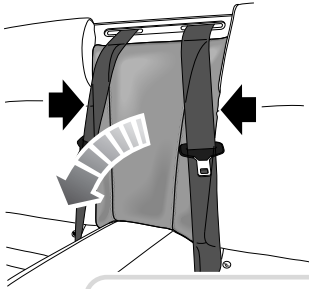
1. Ensure that the ignition is on.
2. Press and hold the front of the overhead console switch. See **OPENING THE CONVERTIBLE TOP** (page 110). Do not release the switch until the convertible top is fully closed and latched and, if required, the rear quarter windows and front door windows are fully closed.
3. If the front windows are in any other position than fully down, they will retract to the fully down position on pressing the closure switch. As the convertible top starts to move, the audible warning will sound.
4. When the top is fully closed and latched, the audible warning sounds again and the rear quarter windows will close, followed by the front door windows returning to the fully closed position.

Note: *If at any period during the convertible top closure sequence, the switch is released, all movement of the convertible top will cease.*

Convertible top

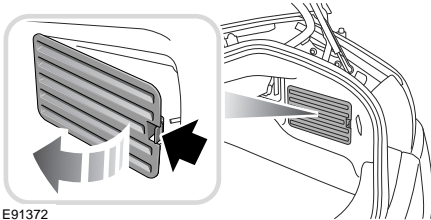
Manual closure of the convertible top

If necessary, the convertible top can be closed manually, as follows:



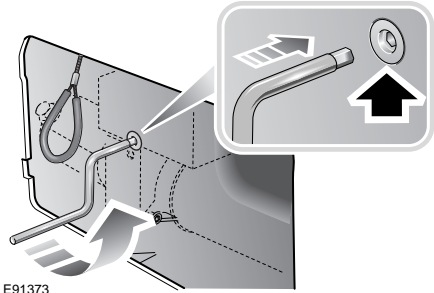
E91371

1. Grasp the sides of the section, as shown, and pull sharply. Remove the Allen key from its stowed position.



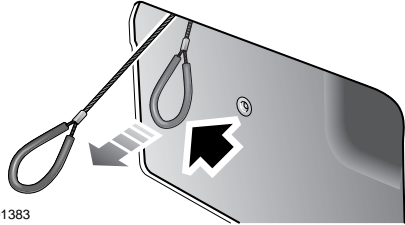
E91372

2. From inside the luggage compartment, remove the vent screen to access the operating pump.



E91373

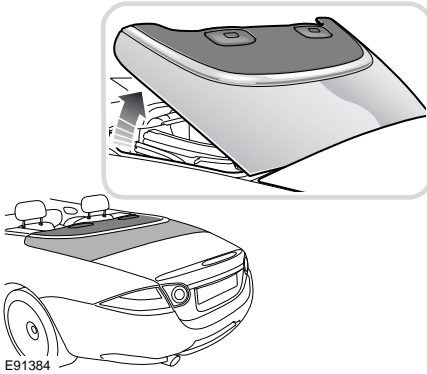
3. Insert the Allen key into the pump and rotate counterclockwise (approximately one turn).



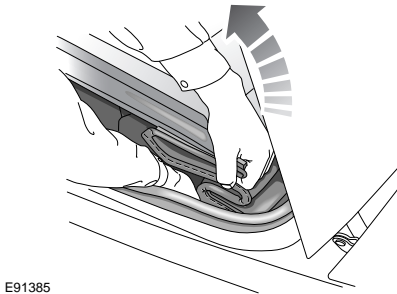
E91383

4. Pull the tonneau release cable, until fully extended. Close the luggage compartment lid.

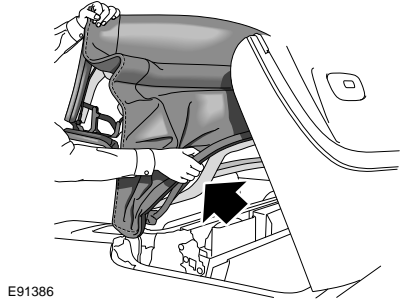
Convertible top



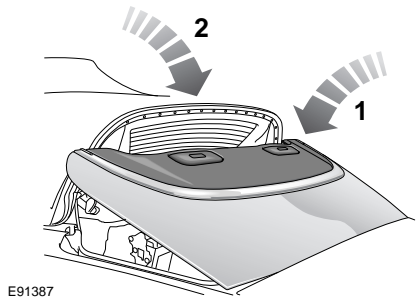
5. Fully open the tonneau panel. It will self-support when fully opened.



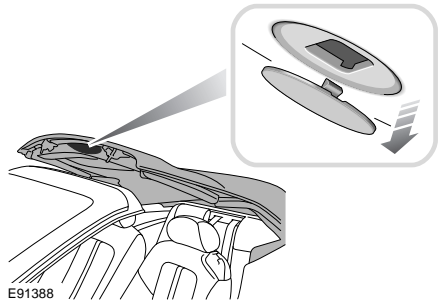
6. From the left-hand side of the vehicle, place your right hand down the side of the folded convertible top. Ensure that the bottom of the convertible top, which includes the tension bow, is securely held. Securely hold the convertible top header assembly with your left hand. With both hands pull the whole of the convertible top up and forward.



7. Ensure that the tension bow is fully raised.

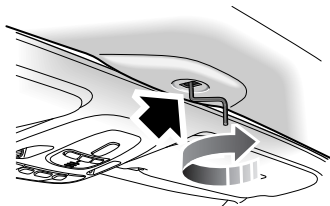
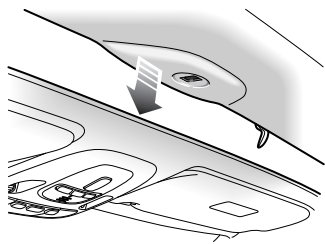


8. Supporting the tension bow, lower the tonneau panel (1). Then lower the tension bow (2) onto the tonneau panel.



9. Remove the plug from the convertible top header trim.

Convertible top



E91389

10. Support the front header. Insert the Allen key into the header panel key slot and turn clockwise until the top is securely latched and resistance is felt.
11. Return the Allen key to its stowed position, refit the rear seat centre section, luggage compartment vent screen and the plug into the convertible top header trim.

Message centre information displays

Message	Priority indicator	Meaning
HOOD NOT LATCHED	Red	The convertible roof is not latched, check for security.
HOOD OUT OF POSITION	Amber	The convertible roof is not positioned correctly. Open or close the convertible roof again and check for correct positioning.
LUGGAGE COVER OUT OF POSITION	Amber	The luggage separator is out of position and should be checked. See OPENING THE CONVERTIBLE TOP (page 110).