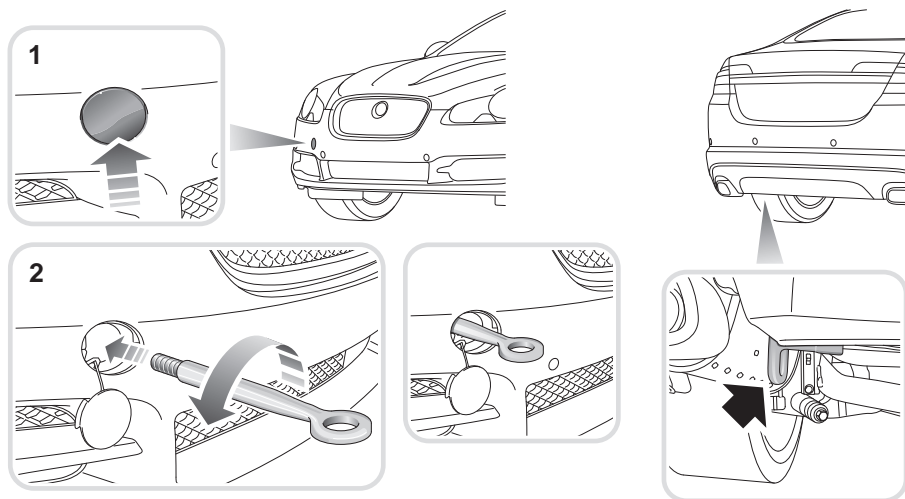


# Vehicle recovery

## TOWING POINTS

### Front and rear towing eyes and lashing points



E95301

### WARNINGS



The towing eyes at the front and rear of the vehicle are designed for on-road recovery only. If they are used for any purpose other than those indicated, it may result in vehicle damage and serious injury.



Never use the towing eyes to tow a trailer, caravan etc. Doing so may result in vehicle damage and serious injury.

### CAUTION



Only use the lashing points indicated, or over-tyre tie-downs, to secure the vehicle to the transporter or trailer. Use of any other position (e.g. lower control arms) may result in damage to the vehicle.

The front and rear towing eyes are the only recommended lashing points on the vehicle.

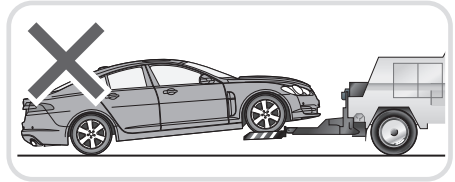
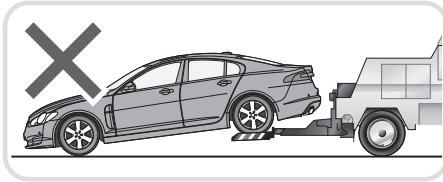
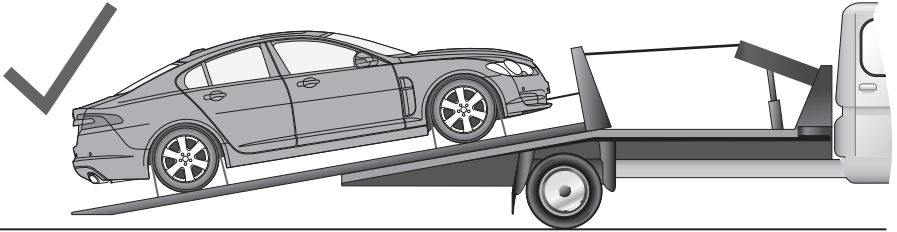
### Attaching the front towing eye

The front towing eye is included in the tool kit, located in the under-floor area of the luggage compartment. See **TOOL KIT** (page 215).

1. Press the lower edge of the towing eye cover in the front bumper to open, then pull from the aperture, allowing the cover to hang from its retaining strap.
2. Locate the towing eye through the bumper and screw the towing eye counter-clockwise into its fixing, until secure.

# Vehicle recovery

## TRANSPORTING THE VEHICLE



E95304

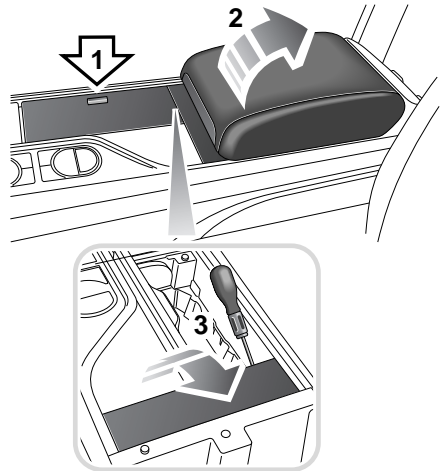
The recommended method for recovery/transportation of the vehicle, is on a transporter or trailer designed for that purpose.

Ensure that transportation is carried out by suitably qualified persons, and that the vehicle is secured correctly.

If the vehicle is being transported on a trailer or vehicle flat-bed transporter, the parking brake must be applied, the wheels are chocked and the Emergency Park Release (EPR) operated, to ensure that the transmission remains in **N** and does not automatically select **P**.

### Emergency Park Release (EPR)

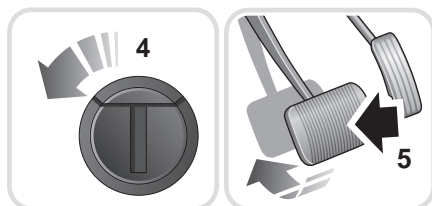
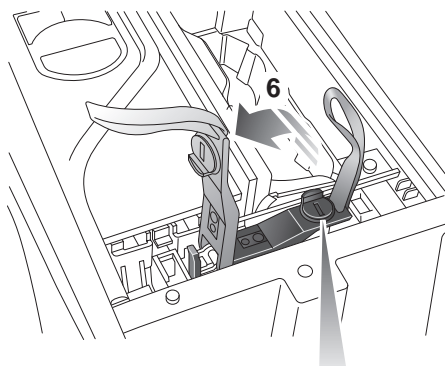
When recovering your vehicle, it is essential that the EPR is operated. EPR prevents the transmission from automatically selecting **P**, ensuring that the transmission remains in neutral (**N**). EPR is operated by a lever located behind a trim panel in the cubby box. Before activating the EPR, select **P**, apply the parking brake and turn the ignition off.



E96407

1. Open the twin cup holder lid.
2. Open the cubby box lid.
3. Using a flat-bladed screwdriver, lever the trim panel upwards (at the point indicated) to release and remove.

# Vehicle recovery



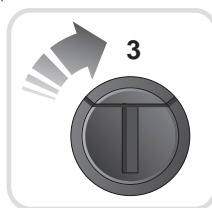
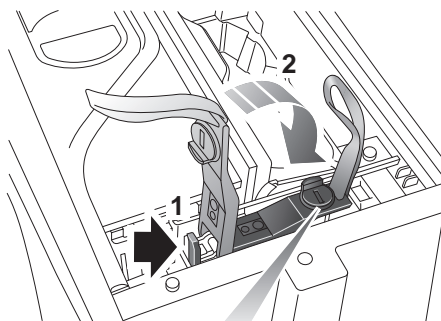
E96408

4. Using a flat-bladed screwdriver, turn the locking device 90° counter-clockwise.
5. Apply the foot brake.
6. Use the strap to pull the EPR lever upwards, until it latches in the vertical position.

When EPR is activated, the JaguarDrive selector will remain in **P**, but the selector indicator and the gear display in the message centre will both flash **N** (if ignition is on), to indicate that EPR is active.

When vehicle transportation has been completed, EPR should be cancelled, to allow Park to be re-engaged.

## Cancelling EPR



E96409

1. Using a flat-bladed screwdriver, release the latch (arrowed).
2. Return the EPR lever to its horizontal position.
3. Turn the locking device 90° clockwise to secure.
4. Replace the trim panel and close the cubby box and twin cup holder lids.

# Vehicle recovery

## TOWING THE VEHICLE ON FOUR WHEELS

### WARNINGS



Ensure that the remote control remains docked whilst the vehicle is being towed. Removing the remote control will engage the steering lock, which will prevent the vehicle from steering correctly.



If the engine cannot be run whilst the vehicle is being towed, there will be no power assistance for the steering or brakes. This will result in greater effort being required to steer or slow the vehicle, and greatly increased stopping distances.

### CAUTIONS



The vehicle should only be towed in a forward direction with all four wheels on the ground.



The vehicle should only be towed for a maximum of 0.8 km (0.5 miles), at a maximum speed of 48 km/h (30 mph). Towing for a greater distance or at a higher speed, may result in serious damage to the transmission.

**Note:** *The recommended recovery method is to raise all four wheels.*

### Towing procedure

1. The vehicle should be parked on firm level ground, with the parking brake on, and the gear selector in **P** (Park).
2. Secure the towing attachment from the recovery vehicle to the front towing eye. See **TOWING POINTS** (page 244).
3. Dock the Jaguar Smart Key and switch on the ignition. See **GENERAL INFORMATION** (page 131).

### CAUTION



Leaving the ignition switched on for extended periods will cause the battery to drain.

4. Apply the foot brake and release the parking brake.
5. With the foot brake still applied, activate the Emergency Park Release (EPR). See **TRANSPORTING THE VEHICLE** (page 245).
6. The vehicle can now be towed a maximum of 0.8 km (0.5 miles) at a maximum speed of 48 km/h (30 mph).
7. Upon arrival at the destination, ensure wherever possible that the vehicle is parked on firm level ground.
8. Lower the Emergency Park Release (EPR) lever, to cancel EPR and to re-engage **P** (Park).
9. Apply the parking brake.
10. Switch off the ignition and remove the Jaguar Smart Key.

### WARNING



Use extreme caution when detaching towing equipment. Vehicle movement is possible which can result in serious injuries.

11. Remove the towing attachment from the towing eye.