

Head restraints

Note: The head restraint can only be removed if the seat is moved forward or back to create more space.

To remove the head restraint, adjust the angle of the back of the seat forward or back to create more space. Press both locking collars at the same time and lift the restraint out of the seat.



Do not drive or carry passengers with the head restraint removed from an occupied seat. The absence of a correctly adjusted head restraint increases the risk of neck injury in the event of a collision.

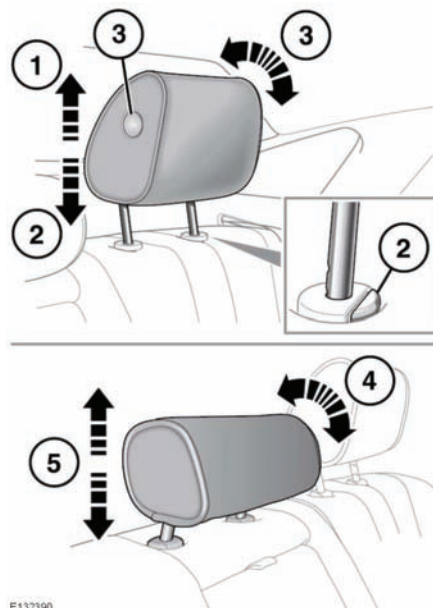


Always store a removed head restraint securely.

REAR HEAD RESTRAINTS



It is possible to swivel the head restraint forwards or backwards. For greater protection in the event of a collision, the head restraint should be adjusted so that it is as close to the back of the head as is practical.



1. To raise, pull the restraint upwards, it will click and lock in position.
2. To lower, depress the locking collar and push down on the restraint.
3. To adjust the angle of the head restraint, press the locking collar on the side of the restraint and tilt to the desired position.
4. To adjust the centre head restraint, tilt the restraint forward.
5. Raise or lower the restraint as required. The head restraint can be locked in one of 3 height positions.