



# Child safety

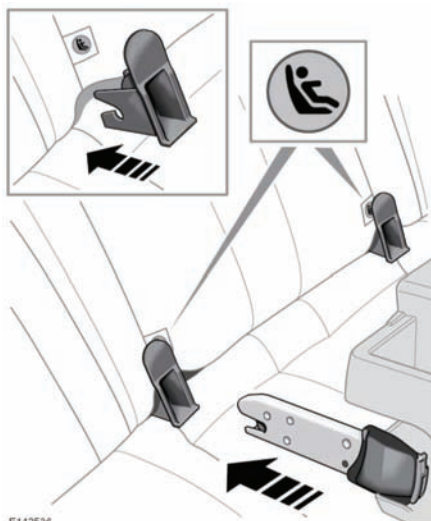
## ISOFIX ANCHOR POINTS (not Australia)

 Do not attempt to fit ISOFIX restraints to the centre rear seating position. The anchor bars are not designed to hold an ISOFIX restraint in this position.

 If the restraint is not correctly anchored, there is a significant risk of injury to the child in the event of a collision or emergency braking.

 If removing the centre head restraint in order to fit a child restraint, always secure the head restraint when storing it.

Both of the outer rear seat positions are equipped to accept ISOFIX restraints.



To install an ISOFIX child seat:

1. Raise the head restraint on the relevant seat.

2. Locate the lower anchor bars which are accessible through the gap between the seat back and seat base. Insert the protective guides supplied with the child seat as shown. The insertion positions for the guides are identified by the ISOFIX labels.
3. Slide the child seat locking mechanism into the protective sleeves and onto the anchor bars.
4. Test the security of the child restraint. To do this, attempt to pull the restraint away from the vehicle seat and twist the restraint from side to side. Even if the restraint appears secure you should always check the anchor points visually to ensure correct attachment.

**Note:** Always ensure that if an upper tether is provided, it is fitted and tightened correctly.

**Note:** The information contained in the following table may not be applicable to all countries. If you are in any doubt regarding the type and fitment of child seats seek advice from your Dealer/Authorised Repairer.

| Mass group  | Size classes  | Fixtures                   | Rear outboard seats    |
|---|---------------|----------------------------|------------------------|
| <b>Carrycot</b>   | F/G           | ISO L1/L2                  | <b>X</b>               |
| <b>0 =</b> Up to 10 kg (22 lb.)<br>0 to 9 months            | E             | ISO R1                     | <b>IL *</b>            |
| <b>0+ =</b> Up to 13 kg (29 lb.)<br>0 to 18 months          | C/D/E         | ISO R1/R2/R3               | <b>IL *</b>            |
| <b>I =</b> 9 to 18 kg (20 to 40 lb.)<br>9 months to 4 years | C/D<br>A/B1/B | ISO R2/R3<br>ISO F2/F2X/F3 | <b>X</b><br><b>IUF</b> |
| <b>II =</b> 15 to 25 kg (33 to 55 lb.)<br>4 to 9 years      | -             | N/A                        | N/A                    |
| <b>III =</b> 22 to 36 kg (49 to 80 lb.)<br>8 to 12 years    | -             | N/A                        | N/A                    |

**IUF** = Suitable for ISOFIX forward child restraint systems of universal category approved for use in the mass group.

**IL** = These ISOFIX child restraint systems are of the specific vehicle, restricted or semi-universal categories.

**X** = Not suitable for child restraint fitment in this mass group.

**\*** = Child seat suitable for use in these locations is the Britax/Römer Baby Safe Plus.

**N/A** = Not available.

**Note:** Ages given are approximate. In case of doubt, the child's weight, not age, should be used when considering an appropriate child seat.