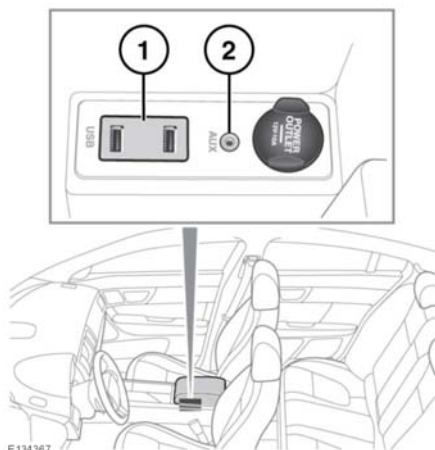


## CONNECTING A DEVICE



1. USB socket.
2. 3.5 mm AUX socket.

Connect the device into the appropriate socket.

**Note:** Use the cable supplied with your media device to connect to the USB socket.

⚠ Read the manufacturer's instructions for any device, before it is connected to the audio system. Ensure that the device is suitable and comply with any instructions regarding connection and operation. Failure to do so may result in damage to the vehicle's audio system or the auxiliary device.

When an iPod is connected, playback will continue from the point at which it was last playing, provided the iPod battery is in a good state of charge.

When a USB device is connected, playback will start from the first track in the first available folder. If a device is connected when **My music** is selected, playback will continue from the point at which it was last playing.

⚠ Do not plug non-audio devices into the USB port.

**Note:** A USB hub cannot be used to connect more than one USB device to the audio unit.

**Note:** Devices connected to the USB ports will be charged, but devices that are fully discharged will not play.

**Note:** Options such as **Repeat** and **Mix** relate to the device currently playing, they will not apply to any subsequent device.

The 3.5mm AUX socket allows additional equipment (e.g. personal stereo MP3 player, hand-held navigation unit, etc.) to be connected to the audio system.

**Note:** iPod shuffle may be connected via the AUX socket.

## PLAYING A PORTABLE DEVICE

If you are using a USB mass storage device or approved iPod, you can control playback using the touch screen controls.

If you are using a **Bluetooth®** wireless technology device, you can control playback using the touch screen, but some controls are unavailable.

If you are using any portable media device via the AUX socket, then you must control playback from the device itself.

⚠ Jaguar does not recommend the use of a Hard Disc Drive via the USB link while the vehicle is in motion. These devices are not designed for in car use and may be damaged.

## CONNECTING MULTIPLE DEVICES

⚠ Do not plug non-audio devices into the USB port.

You can connect multiple devices simultaneously to the portable media interface and switch between them using the touch screen. Select **iPod**, **USB**, **Bluetooth®** or **AUX**, to switch between modes.