

**Note:** The information contained in the following table may not be applicable to all countries. If you are in any doubt regarding the type and fitment of child seats seek advice from your Jaguar Dealer/Authorised Repairer.

Mass group	Size classes	Fixtures	Rear outboard seats
<b>Carrycot</b>	F/G	ISO L1/L2	X
<b>0</b> = Up to 10 kg (22 lb.) 0 to 9 months	E	ISO R1	IL*
<b>0+</b> = Up to 13 kg (29 lb.) 0 to 18 months	C/D/E	ISO R1/R2/R3	IL*
<b>I</b> = 9 to 18 kg (20 to 40 lb.) 9 months to 4 years	C/D A/B1/B	ISO R2/R3 ISO F2/F2X/F3	X IUF
<b>II</b> = 15 to 25 kg (33 to 55 lb.) 4 to 9 years	-	N/A	N/A
<b>III</b> = 22 to 36 kg (49 to 80 lb.) 8 to 12 years	-	N/A	N/A

- **IUF** = Suitable for ISOFIX forward child restraint systems of universal category approved for use in the mass group.
- **IL** = These ISOFIX child restraint systems are of the specific vehicle, restricted or semi-universal categories.
- **X** = Not suitable for child restraint fitment in this mass group.
- **\*** = Child seat suitable for use in these locations is the Britax/Römer Baby Safe Plus.

**Note:** Ages given are approximate. In case of doubt, the child's weight, not age, should be used when considering an appropriate child seat.

## INSTALLING TETHER ANCHORAGE CHILD RESTRAINTS



Child restraint anchorages are designed to withstand only those loads imposed by correctly fitted child restraints. Under no circumstances are they to be used for adult seat belts, harnesses or for attaching other items or equipment to the vehicle.



Always follow the child seat or restraint system manufacturer's instructions when fitting tether straps.



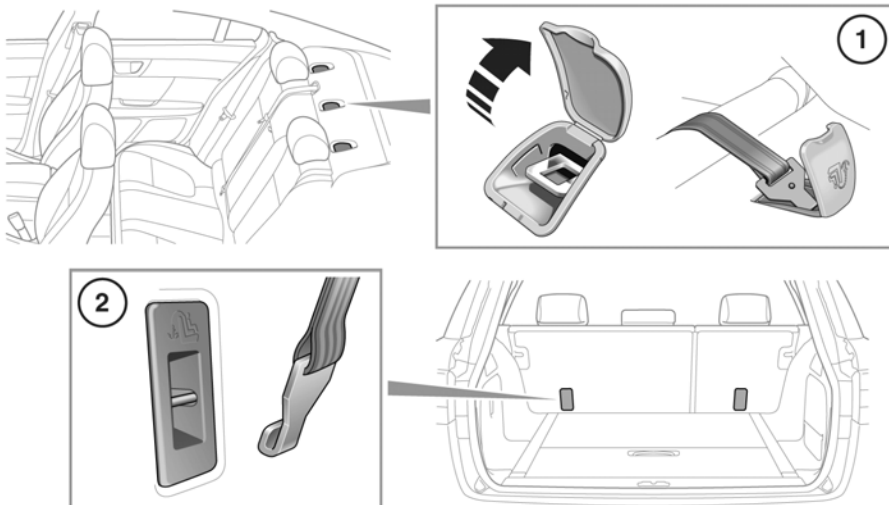
When fitting a child seat or restraint system, always pass the tether strap over the top of the seat back and beneath the head restraint.



If a child seat or restraint system is to be fitted to the centre seating position, the centre armrest must be in the stowed position (folded into the seat).

# Child safety

Your vehicle may be equipped with anchorage points on the back of the second row seat frames. These should be used to attach straps from child seats or restraint systems.



E143945

1. Saloon tether anchorage points.
  2. Sportbrake tether anchorage points.
- Install the child restraint securely in 1 of the rear seating positions.
  - Pass the tether strap over the seat back and beneath the head restraint.
  - Attach the tether strap hook to the tether anchor point. Ensure that the tether strap hook is facing the correct way.
  - Tighten the tether strap according to the manufacturer's instructions.