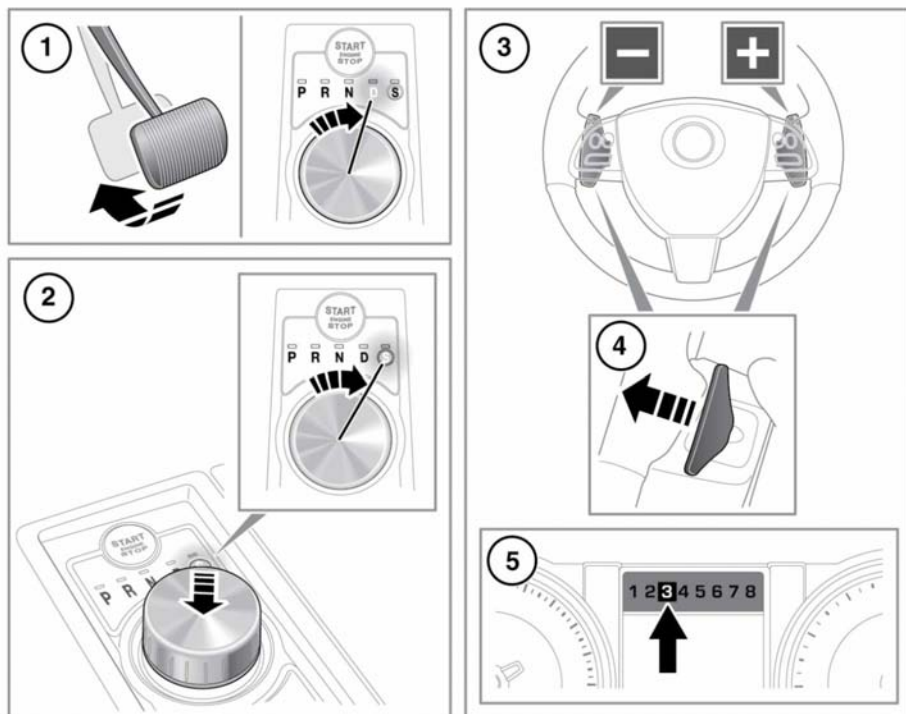


AUTOMATIC TRANSMISSION



E143950

1. To select Drive (**D**) or Reverse (**R**) gear, press the brake pedal then turn the rotary drive selector.
2. To select Sport mode, from **D** press the rotary drive selector down and rotate to **S**.
3. Manual mode gear shift paddles (left paddle for downshifts, right paddle for upshifts).
Note: The gear shift paddles can be configured to operate in 'S only' or 'D and S only' via Security/Vehicle in the Vehicle Set-up menu. See **61, TOUCH SCREEN SETUP**.
4. Pull briefly to change gear.

To exit manual mode, either pull and hold the shift-up paddle for approximately 1 second (to return directly to automatic operation in **D** or **S**), or if in **S**, turn the rotary drive selector to the **D** position.

5. Selected gear display in the Message centre when using manual gear selection.
- ⚠ Never select the Park (**P**) position while the vehicle is in motion. Doing so can result in serious transmission damage.
 - ⚠ Never select the Reverse (**R**) position while the vehicle is in forward motion. Doing so can result in serious transmission damage.