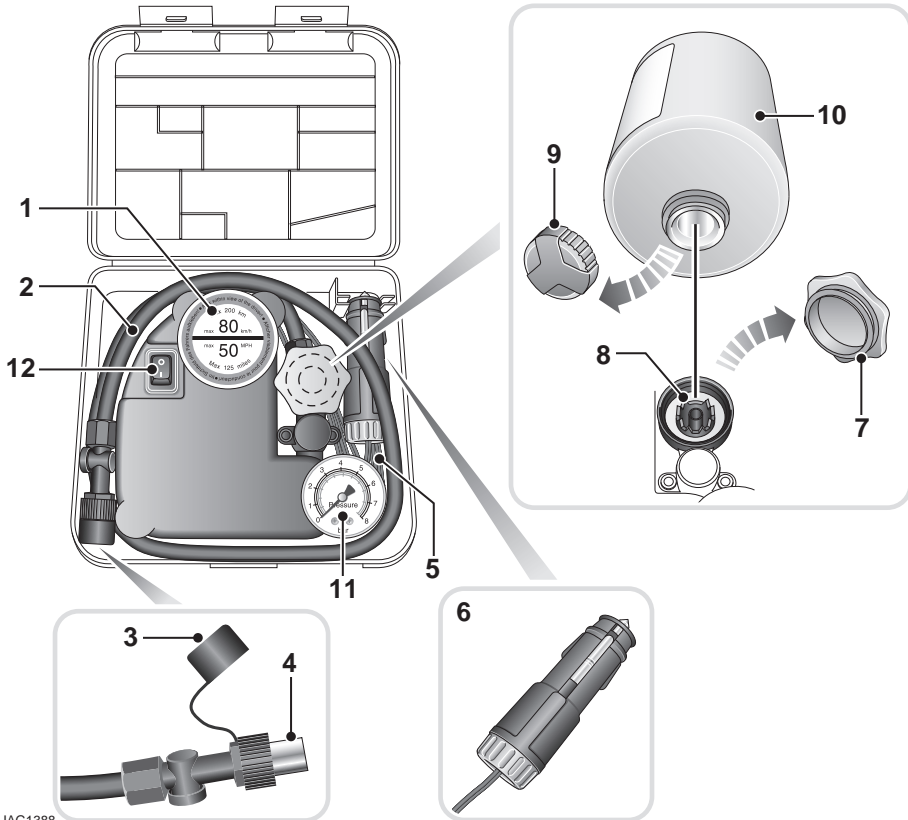


Wheels and tyres

TYRE REPAIR KIT



JAG1388

1. Maximum speed label. 80 km/h (50 mph).
2. Tyre inflation hose.
3. Inflation hose protective cap.
4. Inflation hose connector.
5. Compressor power cable.
6. Power cable connector.
7. Sealant bottle receiver cap (orange).
8. Sealant bottle receiver.
9. Sealant bottle cap.
10. Sealant bottle.
11. Tyre pressure gauge.
12. Compressor on/off switch. (I = on, 0 = off).

Note: The sealant used in the tyre repair kit has a shelf life, and the expiry date is shown on the side of the sealant bottle. Ensure that the bottle is replaced before the expiry date.

WARNINGS



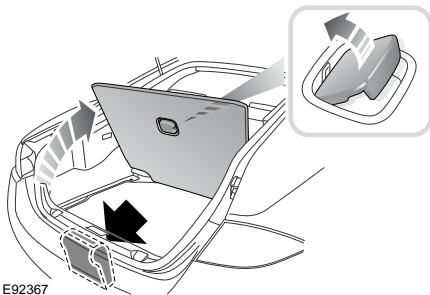
To ensure vehicle safety, it is essential that you read and understand the following information. Failure to follow the instructions given here, may lead to serious tyre damage and may result in death or serious injury.



If you are in any doubt regarding your ability to carry out the instructions, contact your Jaguar Dealer/Approved Repairer before attempting the repair.

Your vehicle may not be equipped with a spare tyre. If this is the case, in its place you will find a Jaguar tyre repair kit. The Jaguar tyre repair kit can be used to repair one tyre, and it is essential that you read the following guide before attempting a repair.

The Jaguar tyre repair kit seals most punctures caused by nails, or similar items, with a maximum diameter of 6 mm (1/4 inch).



The tyre repair kit is located in the rear underfloor storage compartment.

Tyre repair kit safety information

WARNINGS



Some tyre damage may only be partially sealed, or may not seal at all, depending on the amount and type of damage. Any loss of tyre pressure can seriously affect vehicle safety.



Do not use the tyre repair kit if the tyre has been damaged by driving while under-inflated.



Only use the tyre repair kit to seal damage located within the tyre tread area.



Do not use the tyre repair kit to seal damage to the tyre sidewall.



Do not exceed 80 km/h (50 mph) when a repaired tyre is fitted to the vehicle.



The maximum distance that should be driven when a repaired tyre is fitted, is 200 km (125 miles).



When a repaired tyre is fitted, drive with caution and avoid sudden braking or steering manoeuvres where possible.



Only use the tyre repair kit for the vehicle with which it was supplied.



Do not use the tyre repair kit for any other purpose than tyre repair.



Never leave the tyre repair kit unattended when in use.



Only use the tyre repair kit within the -30°C to +70°C temperature range.



Always keep children and animals at a safe distance from the tyre repair kit when in use.



Do not stand directly beside the compressor when it is operating.

Wheels and tyres

WARNINGS



Check the tyre sidewall prior to inflation. If any cracks, damage, or deformities are apparent do not inflate the tyre.



Watch the tyre sidewall during inflation. If any cracks, bumps, deformities or similar damage appears, switch off the compressor, and deflate the tyre.

Using the Jaguar tyre repair kit

WARNINGS



Avoid skin contact with the sealant which contains natural rubber latex.



If the tyre inflation pressure does not reach 1.8 bar (26 lbf/in²) within seven minutes, the tyre may have suffered excessive damage. A temporary repair will not be possible, and the vehicle should not be driven until the tyre has been replaced.

CAUTIONS



Before attempting a tyre repair, ensure that the vehicle is parked safely, as far away from passing traffic as possible.



Ensure that the parking brake is applied, and **P** (Park) is selected.



Do not attempt to remove foreign objects such as nails, screws, etc. from the tyre.



To prevent battery drain, always run the engine when using the compressor, unless the vehicle is in an enclosed or poorly ventilated space, as this may cause asphyxiation.



To prevent overheating, do not operate the compressor continuously for longer than ten minutes.

Note: All vehicle drivers and occupants should be made aware that a temporary repair has been made to a tyre fitted to the vehicle. They should also be made aware of the special driving conditions imposed when using a repaired tyre.

1. Open the tyre repair kit and peel off the maximum speed label. Attach the label to the fascia in the driver's field of vision. Take care not to obstruct any of the instruments or warning lights.
2. Uncoil the compressor power cable and the inflation hose.
3. Unscrew the orange cap from the sealant bottle receiver and the sealant bottle cap.
4. Screw the sealant bottle into the receiver (clockwise) until tight.
 - Screwing the bottle onto the receiver will pierce the bottle's seal. Once the receiver has been fitted, a ratchet prevents it from being removed.
5. Remove the valve cap from the damaged tyre.
6. Remove the protective cap from the inflation hose and connect the inflation hose to the tyre valve. Ensure that the hose is screwed on firmly.
7. Ensure that the compressor on/off switch is in the off (**O**) position.
8. Insert the power cable connector into the auxiliary power socket in the glove box. See **AUXILIARY POWER SOCKET** (page 114).
9. Unless the vehicle is in an enclosed or poorly ventilated area, start the engine.
10. Set the compressor on/off switch to the on (**I**) position.

11. Inflate the tyre to a minimum of 1.8 bar (26 lbf/in², 180 kPa) and a maximum of 3.5 bar (51 lbf/in², 350 kPa).

When pumping the sealant through the tyre valve, the pressure may rise up to 6 bar (87 lbf/in², 600 kPa). The pressure will drop again after approximately 30 seconds.

12. During inflation, switch the compressor off briefly, to check the tyre pressure using the gauge mounted on the compressor.
It should not take longer than 7 minutes to inflate the tyre. If the tyre has not reached the minimum pressure after 7 minutes, the tyre should not be used.
13. Once the tyre has been inflated to at least 1.8 bar (26 lbf/in²), switch off the compressor. If desired, the engine may be turned off after the compressor has been turned off.
14. Remove the power connector from the auxiliary power socket.
15. Remove the inflation hose from the tyre valve by unscrewing it as quickly as possible (anticlockwise).
16. Replace the inflation hose protective cap, and the tyre valve cap.
17. Ensure that the entire tyre repair kit is placed securely in the vehicle. You will need to use the kit to check the tyre pressure after 3 km (2 miles), so ensure that it is easily accessible.
18. Immediately drive the vehicle for approximately 3 km (2 miles), to allow the sealant to coat the inner surface of the tyre and form a seal at the puncture.

Checking the tyre pressure after a repair

WARNINGS



When driving the vehicle, if you experience vibrations, abnormal steering or noises, reduce speed immediately. Drive with extreme caution and reduced speed, to the first safe place to stop the vehicle. Visually examine the tyre and check its pressure. If there are any signs of damage or deformity to the tyre, or the tyre pressure is below 1.3 bar (19 lbf/in², 130 kPa), do not continue driving.



Consult a tyre repair centre, or your Jaguar Dealer/Authorised Repairer for advice concerning the replacement of a tyre after using a tyre repair kit.

1. Drive the vehicle for 3 km (2 miles) then stop in a safe place. Carry out a visual examination of the tyre's condition.
2. Remove the protective cap from the inflation hose.
3. Screw the inflation hose connector firmly onto the tyre valve.
4. Read the tyre pressure from the gauge.
5. If the pressure of the sealant filled tyre is above 1.3 bar (19 lbf/in², 130 kPa), adjust the pressure to the correct value. See **TYRE CARE** (page 185).
6. Ensure that the compressor on/off switch is in the off position (0) and insert the power cable connector into the auxiliary power socket.
If the vehicle is in a well ventilated area, start the engine.
7. Switch on the compressor (I), and inflate the tyre to the correct pressure.
8. To check the tyre pressure, turn off the compressor then read the pressure from the gauge.