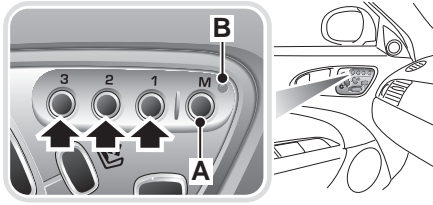


Convenience features

MEMORY FUNCTION



JAG1366

This facility enables the position of the driver's seat, steering column and exterior rear-view mirrors to be memorised and recalled. Three different position sets can be entered into the memory.

Setting a driving position

To store a driving position in the memory:

1. Adjust the seat, steering column and exterior rear-view mirrors to the desired positions.
2. In the door switch pack, push the **M** memory button (**A**) - the red indicator (**B**) will illuminate for a five second period.
3. While the red indicator is illuminated, press one of the memory preset buttons (**1**, **2** or **3**) to memorise. The indicator will extinguish and a chime will indicate that the setting procedure is complete. Additionally, if the ignition is on, the message centre will display a message that the settings have been saved.

To replace a memorised position with a new position

Adjust the seat to the desired position, perform steps 2 and 3 above. The previous memory will be erased and the new position will be set.

Recalling a memorised position from the door switchpack

Press and hold the appropriate memory preset button (**1**, **2** or **3**). The button has to remain pressed until the recall is complete. If the button is released before total recall is completed, all movement will cease.

Memory system operating tips

- When making adjustments to a set driving position, reset the new position using the same memory button.
- Ensure that the seat has completed moving into the required memory position, before shifting the gear selector from the **P** (Park) position.

Passenger seat memory setting

The passenger door has a seat memory switch pack similar to that on the driver's door.

The passenger seat can be set to three memory positions by using the memory preset buttons **1**, **2** and **3**.

The procedure for the setting and the recalling of the passenger seat memory is the same as for the driver's seat.

However, there are no acceptance messages or a completed procedure chime.

Convenience features

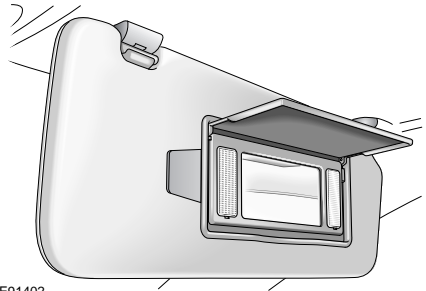
INSTRUMENT LIGHTING DIMMER



The instruments, switch packs and touch-screen, will be illuminated when the exterior lamps are switched on.

1. Push and release the knob to extend it for ease of operation.
2. Rotate the knob to adjust the illumination.
3. Push the knob again to return it to the stowed position.

SUN VISORS



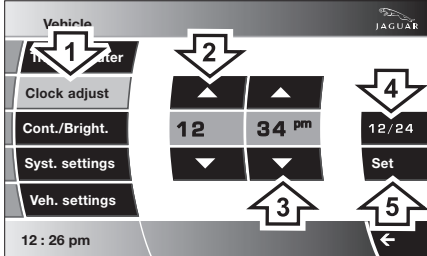
Adjustable sun visors can be swung downwards or unclipped and swung sideways to reduce sun glare.

The sun visors are fitted with a ticket holder and illuminated vanity mirrors, behind a hinged flap. The light comes on when the flap is lifted.

Convenience features

CLOCK

The clock time can be adjusted via the Home menu by selecting **Vehicle**.



JAG1414

1. Select **Clock adjust**.

2 and 3. Touch the appropriate **up** or **down** arrow buttons to adjust the hours and minutes.

4. Toggles between 12 and 24 hour clock display. On the 12 hour display, **am** or **pm** is displayed as appropriate.

5. The displayed clock time in the bottom left-hand corner, will not change to the new time until **Set** is selected.

If **Set** is not selected, the altered time will be lost on exiting from the screen.

To set the clock as a screen saver

From the main Home menu, select **Vehicle**.

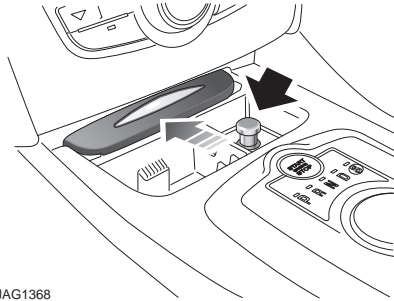
1. Select **Syst. settings**.

2. Select **Display set**.

3. Touch the clock symbol. The clock will now appear as the screensaver.

Note: To select an alternative screensaver from the four available, select the appropriate icon.

CIGAR LIGHTER



JAG1368

To gain access to the cigar lighter and ashtray, push the bottom edge of the lid.

To operate the cigar lighter, the ignition must be on. Press the lighter in and wait until the element has heated, it will then pop-up.

Note: Never hold the lighter knob down. Do not attempt to remove particles from the heating element as it is self-cleaning. The cigar lighter is designed to be used just to heat the lighter element and not for providing a power source for accessories.

The cigar lighter is replaced by a 12 volt accessory socket on certain models.

ASHTRAY

WARNING



Do not use the ashtray for disposing of waste paper or other combustible items.

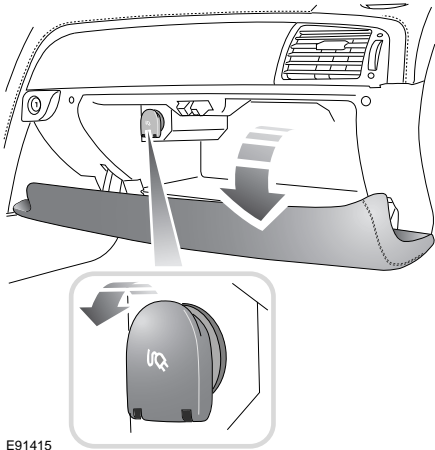
To empty the ashtray, lift out vertically and remove. After emptying, push the ashtray into the opening until it snaps back into place.

Passenger door ashtray

To remove the passenger door ashtray bin, lift it out vertically.

Convenience features

AUXILIARY POWER SOCKET



E91415

An electrical accessory socket is located inside the glove compartment. This 12 volt socket should only be used for the temporary connection of electrical items, such as a vacuum cleaner or cool box.

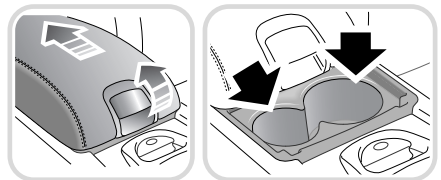
CAUTIONS

- ⚠ Only Jaguar approved accessories should be plugged into the power sockets. Using any other equipment may damage the vehicle's electrical system. If you are in any doubt contact a Jaguar Dealer/ Authorised Repairer.
- ⚠ The engine should be running when using accessories for long periods. Failure to do so can discharge the battery.

CUP HOLDERS

WARNINGS

- ⚠ The driver should not drink or use the cup holder whilst driving.
- ⚠ The cup holder should be kept closed when not in use.
- ⚠ Do not place anything other than suitable drinks containers in the cup holder. Such items may be thrown about in the compartment in the event of an accident or emergency manoeuvre, which may cause injuries to the occupants.
- ⚠ Do not carry open-top drink containers in the cup holders while the vehicle is in motion: a spilled hot drink could cause personal injury, and may damage upholstery, carpeting and electrical components.
- ⚠ Use only for soft drinks containers. Do not use to hold cups made of glass, china or hard plastic, as these may cause injury in the event of an accident or emergency manoeuvre. Unopened, sealed containers (drinks cans, for example) are hard objects and may also cause injury.



E91410

To access the two cup holders, pull the catch on the centre cubby box lid upwards and slide the lid/armrest rearwards.

Convenience features

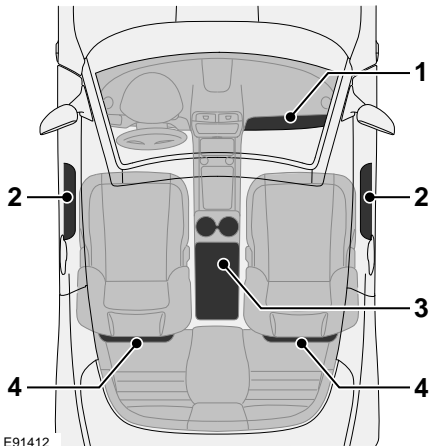
STORAGE COMPARTMENTS

WARNING



Ensure that any items stored in the vehicle are secure and cannot move.

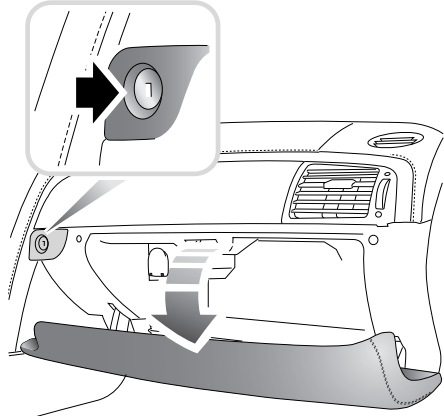
If the vehicle is involved in an accident, or subject to sudden braking or direction change, loose items can cause serious injury.



E91412

1. Glove box.
2. Door stowage compartments.
3. Centre cubby box.
4. Seat map pockets.

Glove box



E91413

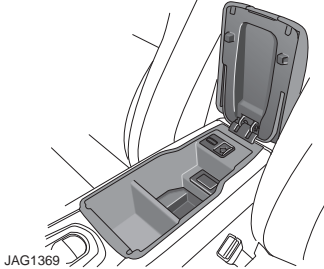
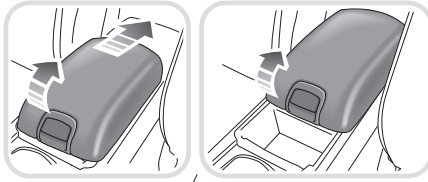
To open the glove box, press the release button and allow the lid to drop down. The glove box will be illuminated when open.

If the glove box is left open, the light will extinguish after approximately 40 minutes.

The glove compartment can be locked using the key blade and secured for valet mode. See **USING THE EMERGENCY KEY BLADE** (page 24).

Convenience features

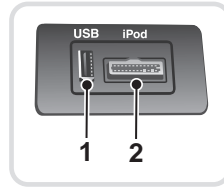
CENTRE CUBBY BOX



The sliding armrest is hinged at the rear and has a release button located on the front of the armrest.

Pull the chromed button upwards to raise the armrest and gain access to the cubby box. As the armrest is lifted it slides back under its own weight allowing full access to the cubby box.

PORTABLE AUDIO INTERFACE



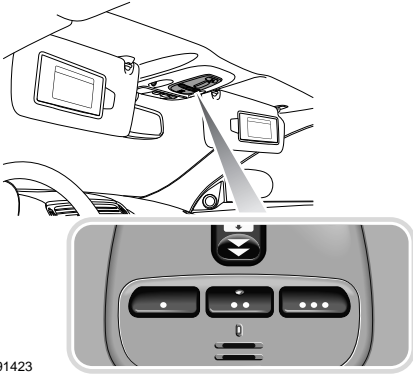
JAG1231

1. USB connector port.
2. iPod input port.

The interface sockets are located in the cubby box and can be used to integrate personal media devices with the vehicle's audio system. See **PORTABLE AUDIO** (page 277).

Convenience features

GARAGE DOOR TRANSCIVER



E91423

The door transceiver is located in the roof console. It can be programmed to transmit the radio frequencies of up to three different transmitters which can be used to activate garage doors, entry gates, home lighting, security systems or other radio frequency operated devices.

Although this section mainly describes the procedures for a garage door opener, it equally applies to the previously mentioned applications.

In some countries this feature is also known as the HomeLink® Universal Transceiver.

For further information, see **Information and Assistance** later in this section.

WARNINGS



Do not use the transceiver with any garage door opener that lacks the safety stop and reverse feature as required by safety standards. Using a garage door opener without these features increases risk of serious injury or death.

WARNINGS



When programming the transceiver to a garage door opener or entry gate, ensure the area is clear. This will prevent potential harm or damage as the gate or garage door will activate during the programme.

CAUTION



This device may suffer from interference if operated in the vicinity of a mobile or fixed station transmitter. This interference is likely to affect the hand-held transmitter as well as the in-car transceiver.

Before programming

CAUTION



When programming a device that may require you to press and re-press the hand-held transmitter (cycle), unplug the device during the cycling process to prevent possible motor failure.

For best results, fit a new battery to the hand-held transmitter of the garage door opener (or other device) before programming. If your garage door opener receiver (located in the garage) is equipped with an antenna, ensure that the antenna is hanging straight down.

To erase all programming

For first time programming, ensure that the engine is switched off:

1. Ensure that the ignition is in convenience mode.
2. Press and hold the two outer buttons on the transceiver in the overhead console. Keep the buttons pressed, the indicator lamp (1) will illuminate. The indicator lamp is located in the middle button.

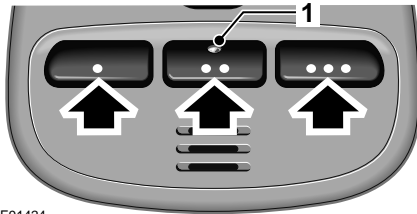
Convenience features

3. Release the buttons when the lamp begins to flash (this will take approximately 20 seconds).

All memories in the garage door opener have now been cleared.

Note: Do not perform this procedure when programming the additional garage door opener buttons.

Programming the vehicle



E91424

Ensuring that the engine is switched off:

1. Ensure that the ignition is in convenience mode.
2. Hold the end of the original garage door opener hand-held transmitter approximately 50 to 150 mm (2 to 6 inches) away from the transceiver in the roof console, keeping the indicator lamp in view.
3. Using both hands, simultaneously press and hold both the desired garage door opener button on the overhead console, as shown above, and the **hand-held transmitter button**.
4. Keep both buttons pressed. The indicator lamp (1) will flash slowly at first and then change to a fast flash. When the indicator lamp flashes rapidly, release both buttons. The rapid flashing lamp indicates successful programming.

5. If, after 60 seconds, the indicator lamp does not flash rapidly, release both the transceiver and the hand-held transmitter buttons and repeat the procedure starting with Step 2. Position the hand-held transmitter at a different angle and/or distance.
6. Press and hold the programmed overhead console garage door opener button and observe the indicator lamp.
 - If the indicator is continuous, programming is complete and your device should activate when the garage door opener button is pressed and held for approximately 1 to 2 seconds and then released.
 - If the indicator lamp flashes rapidly for two seconds and then illuminates continuously, proceed with the following programming instructions for **rolling code** device equipment.

Note: To programme additional garage door opener buttons, begin at Step 2.

Rolling code device equipment programming

1. At the garage door opener receiver (motor head unit) in the garage, locate the learn or smart button/switch.
 - The name of the button or switch may vary between manufacturers.
2. Press and release the learn or smart button.
3. Return to the vehicle and firmly press and hold the programmed garage door opener button for two seconds and release.
4. Repeat the press, hold, release sequence three times to complete the programming process.

Convenience features

The garage door opener in the overhead console should now activate the **rolling code** device.

Note: *A second person may make the following steps quicker and easier as once the button has been pressed there are only 30 seconds in which to complete Step 3.*

Reprogramming a single garage door opener button

To programme a device to a previously trained button:

1. Press and hold the desired pre-programmed garage door opener button for at least 20 seconds, but no longer than 30 seconds, until the indicator lamp begins to flash.
2. Without releasing the overhead console button, position the hand-held transmitter approximately 50 to 150 mm (2 to 6 inches) away from the transceiver in the overhead console, keeping the indicator lamp in view.
3. Using both hands, simultaneously press and hold both the desired garage door opener button on the overhead console, as shown above, and the **hand-held transmitter button**.

Entry gate programming

The technology of some entry gates requires you to press and re-press (cycle) the hand-held transmitter button every two seconds during programming.

Continue to press and hold the desired overhead console button while you cycle your hand-held transmitter, until the indicator lamp flashes rapidly.

Information and assistance

CAUTION



It is recommended that when you sell or dispose of the vehicle, the programmed transceiver buttons be erased for security purposes.

For information on the range of available compatible products or accessories, or for assistance, you should contact your Jaguar Dealer/Authorised Repairer.

You can also contact the supplier's helpline on 0 0800 0466 354 65. This toll-free number can be called from anywhere within Europe. No separate country code is required (the first zero is not required when calling from within Germany).

Contact can also be made via the internet. The website address is www.eurohomelink.com.

The e-mail address is

info@eurohomelink.com.

Note: *Keep the original transmitter for future use or programming procedures if, for example, you purchase a new vehicle.*

Note: *The manufacturer is not responsible for any radio interference caused by unauthorised modifications to this equipment. Such modifications could void the user's authority to operate the equipment.*