

## Introduction

### Security design features

The security system has been designed for:

- Prevention of theft of the vehicle.
- Prevention of theft of items from the vehicle.
- Rapid recovery of the vehicle.
- Personal security.

The security system is integrated with the electronics and engine management systems making it far more difficult for a thief to penetrate and prevents engine starting unless the correct ignition key is used.

Standard alarm features cover the perimeter sensing of hood, doors and luggage compartment.

Passive arming, the automatic alarm system, can be programmed by a Jaguar Dealer. This ensures that the security system arms itself 30 seconds after the doors, hood and luggage compartment are closed following removal of the key from the ignition switch.

**Note:** Passive arming does not lock the doors.

### Vehicle security

When leaving the vehicle unoccupied, remember the following:

- Apply the parkbrake and, with automatic transmission, move the gear selector to Park 'P'.
- Remove the ignition key and spare keys, even when the vehicle is in your garage.
- Close all windows and lock all doors securely.
- When leaving the vehicle unattended, for maximum security ensure that the doors are locked.
- Ensure that all key transmitters are removed from the vehicle before locking the doors, and that all doors, the luggage compartment and the hood are closed.

### Security of keys and key-ring transmitters

It is important to keep your keys and key-ring transmitters in safe places at all times. Leaving them in conspicuous places is an invitation for a thief to steal them and, consequently, your car or belongings. Keep them as secure as you would your wallet or purse, both at home and away. Do not leave the key number tag with the keys, detach the number tag and keep it in a safe place.

For increased security, replacement keys are only obtainable from a Jaguar Dealer who will ask for proof of vehicle ownership before the key can be ordered from Jaguar Cars Ltd. A log of all enquiries for replacement keys is kept by Dealers and notified to Jaguar Cars Ltd.

## 2-2 Security and locks

### Key identification and locks

Key numbers are recorded on plastic tags which are attached to each key.

These numbered tags must be detached and kept in a secure place so that correct replacement keys can be obtained.

A set of three keys is supplied with the vehicle; two black-headed keys (one as a spare) and one green-headed key.

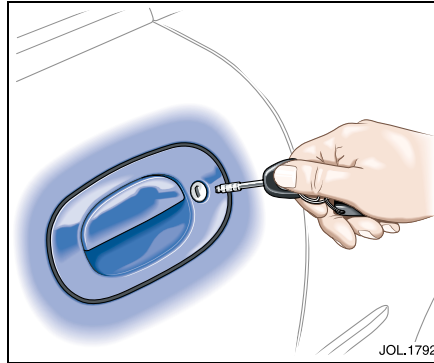
The black-headed keys will lock and unlock the steering column lock/ignition switch, the doors, and the luggage and glove compartments.

The green-headed key is a 'valet' key and must only be used when the vehicle is to be driven and parked by an attendant.



#### **WARNING:**

**The door windows lower and raise automatically when the door is opened and closed. Keep fingers away from the windows when closing the door. Do not close the door by placing your fingers on top of the glass.**



### Key operation

#### Door locking/unlocking using a key

##### Locking

##### Note:

1. The security system will not arm if a key is in the ignition switch or if a protected entry is open. Ensure that the keys and the key-ring transmitter are removed from the vehicle before locking the doors, and that all doors, the luggage compartment and the hood are closed.

2. Remove the convertible top cover (if fitted) before closing the top.

The doors and luggage compartment can be locked or unlocked simultaneously by operating the driver's door lock.

#### **To lock and set alarm (perimeter only)**

Turn key towards the front of the vehicle and release. The direction indicators will flash once and a sound will be heard.

This will lock the driver and passenger doors, the luggage compartment and set the alarm system.

Hold the key in the 'Lock' position to close all windows (and the convertible top, if fitted).

## Global locking



### **WARNING:**

**When using the 'all close' feature ensure that all occupants are kept clear of the windows and the convertible top.**

Turn the key towards the front of the vehicle. Hold in this position and the vehicle alarm system will arm, the windows (and convertible top, if fitted), will close and the doors and luggage compartment will be locked.

**Door locking system** (green-headed 'valet' key)

Before locking the vehicle and handing the green-headed 'valet' key to a parking attendant, press the valet switch on the driver's knee bolster to inhibit the luggage compartment remote release switch. The vehicle can then be parked by an attendant who can lock the vehicle after parking, but cannot open the luggage compartment. The luggage compartment can then only be unlocked with the black-headed key or the key-ring transmitter.

**Note:** Do not use the green-headed valet key for normal driving. Once isolated from the remote release switch, the luggage compartment cannot be opened with this key.

## Unlocking

### **To unlock and disarm alarm system**

Turn key towards the rear of the vehicle and release.

This unlocks all doors, luggage compartment, disarms the alarm system (if fitted), and turns on the interior lights for 2 minutes at  $\frac{3}{4}$  brightness. At the same time, the direction indicators will flash twice and two signals will be heard.

Hold the key in the 'Unlock' position to open all windows (and convertible top, if fitted). If the vehicle is fitted with an alarm system, opening is only possible with the vehicle disarmed.

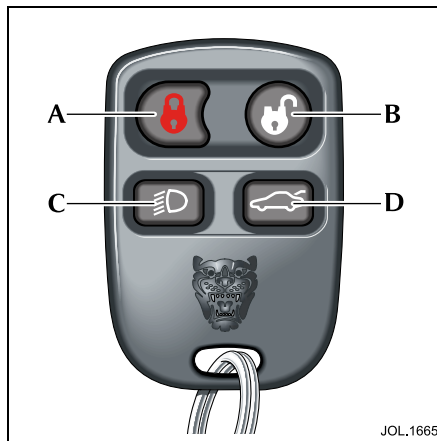
## Global unlocking

Put the key into the door lock, turn clockwise and hold in this position. This disarms the vehicle and opens the windows and convertible top, if fitted.

## 2-4 Security and locks

### Key-ring transmitter

The Security System is controlled remotely by a radio frequency, battery-operated key-ring transmitter. The transmitter uses a random encrypted fixed and rolling code each time the system is used. This provides billions of combinations and ensures that the code cannot be copied.



Each of the two transmitters supplied is designed to be attached to a driver's key-ring.

The key-ring transmitter is activated by pointing it towards the vehicle and pressing one of the four operating buttons:

- (A) – Locks and arms the vehicle.
- (B) – Unlocks and disarms the vehicle.
- (C) – One press switches on headlamps for 25 seconds. Three presses starts the Panic Alarm.
- (D) – Releases luggage compartment lock.

### Care of key-ring transmitters

The key-ring transmitters must be treated with care and not exposed to extremes of heat, dust, humidity or be in contact with fluids. The batteries are the only serviceable part.

### Key-ring transmitter loss

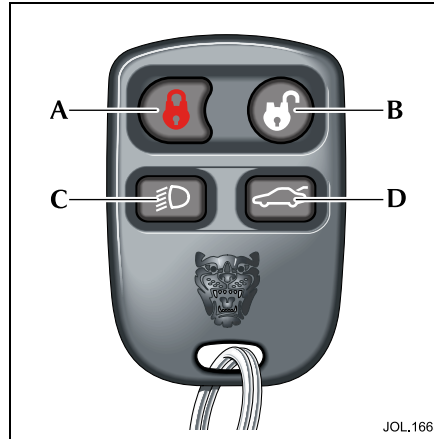
If a transmitter is lost or stolen it is advisable to contact your Dealer, without delay, to have the remaining transmitter re-programmed to prevent anyone using the lost transmitter. A new key-ring transmitter can be obtained from your Jaguar Dealer, who will ask for proof of vehicle ownership.

### Key-ring transmitter operation

The key-ring transmitter will not operate if the key is in the ignition.

The security system will not arm if the key is in the ignition switch or if any protected entry is open.

**Caution:** The key-ring transmitter may suffer interference from other legal users of this radio frequency band, such as radio amateurs, medical equipment, remote controls or alarm systems. To lock or unlock the vehicle either use a key or operate the key-ring transmitter as close to the security antenna on the rear screen as possible.



### Key-ring transmitter operation – button functions

#### Button (A) (locks and arms)

**First press (if vehicle is unlocked and disarmed):** Locks all doors, luggage compartment and sets the alarm system. The direction indicators will flash once whilst locking and arming occurs. A single sound will also be heard. The red security system warning light in the gear selector panel will start to flash and will continue flashing while the vehicle is armed.

#### Button (B) (Unlocks and disarms)

**One press:** Unlocks the driver's door and the luggage compartment. Disarms security system alarm and switches on interior lights for 2 minutes at  $\frac{3}{4}$  brightness. It also cancels the luggage compartment valet lock-out, if set. The direction indicators will flash twice and two sounds will be heard as the vehicle is unlocked and disarmed.

**Second press:** Unlocks the passenger's door.

#### Button (C)

**One press:** Switches on headlamps. The headlamps will remain on for 25 seconds, or until the key is inserted in the ignition switch and turned to position 'II', or until the button is pressed again.

**Three presses within 3 seconds:** Starts Panic Alarm (where fitted).

Pressing the headlamp button on the key-ring transmitter three times within 3 seconds will activate the 'Panic Alarm'.

## 2-6 Security and locks

---

The Panic Alarm will sound for the normal full alarm period. The alarm is stopped by inserting the key into the ignition switch and turning the ignition key to position 'I' or 'II'.

### Button (D)

**One press:** Releases luggage compartment lock.

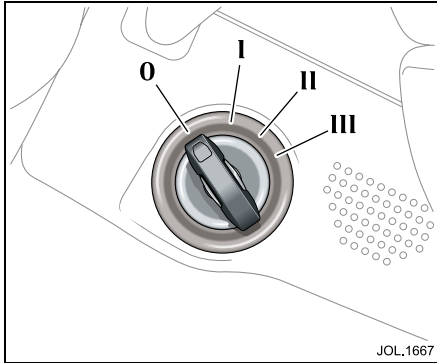


### Key-ring transmitter battery renewal

To ensure that the key-ring transmitter operates at its full capacity, use a CR 2032 battery. When there is a significant decrease in the effective range of the key-ring transmitter, renew the battery.

**Caution:** To avoid disrupting the coding of the key-ring transmitter during battery renewal, the operating buttons must not be pressed. If the code is disrupted, it will be necessary to have your Jaguar Dealer re-programme the key-ring transmitters.

To renew the battery, insert a slim blade into the gap in the casing and prise apart, exposing the disc battery cell. Fit the new battery with the side marked with the positive symbol (+) facing into the battery receptacle. Refit the battery cover and click into place with thumb pressure.



## Ignition/starter switch and steering lock

This switch is on the right-hand side of the steering column. It is operated through four positions by the ignition key.

**Note:** Should any warning lights or warning messages stay on after starting the engine, the cause must be investigated before driving off.

- 0. The only position in which the key can be inserted or removed. When the key is out, the steering lock is engaged.
- I. **Auxiliary position:** Certain circuits, i.e. radio, windows, can be operated without switching on the ignition.

- II. **Ignition position:** All circuits except the starter motor are actuated. The key remains in this position when driving.
- III. **Start position:** The starter motor is operated for as long as the key is held in this position, against spring pressure. If the engine fails to start, the key must be returned to position 'I' before another start is attempted.

### To disengage steering lock and start engine

Insert the key and turn clockwise. If resistance is felt, turn the steering wheel slightly to release the steering lock. Turn the key to position 'II' to switch on the ignition.



#### **WARNING:**

**Before starting the engine, check the parkbrake is ON and the gear selector lever is in position 'P' or 'N'.**

To start the engine, turn the key to position 'III'. When the engine starts, release the key which will return to position 'II'.

**Note:** Do not depress the accelerator pedal whilst operating the starter motor.

Do not use the starter continuously for longer than 6 seconds. Wait until the engine stops before reusing the starter. If the engine persistently fails to start it is possible that the engine is flooded with fuel. Turn the ignition off, then on and wait until the bulb check is completed. Slowly depress the accelerator pedal fully, hold it in this position and start the engine. Release the pedal when the engine starts.

If the engine still fails to start, switch the ignition OFF and contact a Jaguar Dealer. Continued use of the starter will discharge the battery and may also damage the starter mechanism.

If the ignition circuits are isolated, the fuel system inertia switch may have tripped, and will require resetting (see Section 6).



#### **WARNING:**

**Never switch OFF the engine (ignition) whilst the vehicle is in motion as the steering lock may operate.**

## 2-8 Security and locks

---

Due to the installed starter non-repeat feature, the key must be turned to position 'I' before attempting to start the engine again.

When the engine starts, check the oil pressure gauge, if fitted. Do not increase engine speed before pressure registers on the gauge. If the gauge is not fitted, do not increase the engine speed until the oil pressure warning light goes out.

The red ignition warning light should go out when the engine is running.

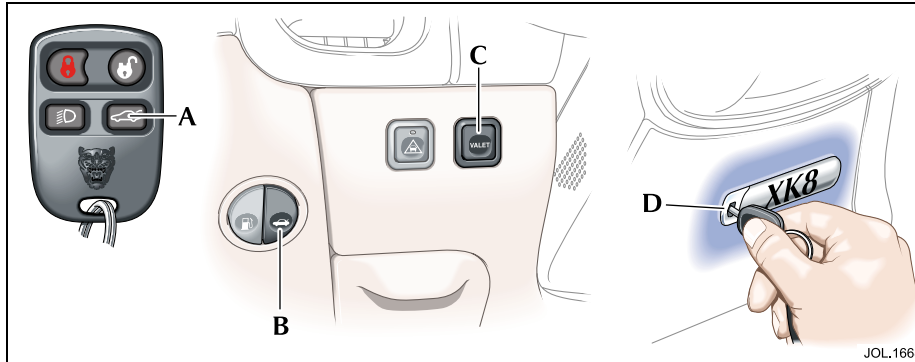
### **To stop engine and lock steering**

Turn the key from position 'II' to the 'lock' position 'O'. This stops the engine.

The ignition key cannot be removed from the ignition switch/steering lock unless the gear selector lever is in position 'P'.

Once the ignition key has been removed the gear selector lever will be locked in position 'P'.

A manual release mechanism will allow the gear selector lever to be unlocked from the 'P' position in the event of electrical failure or when moving the vehicle without power (i.e. towing). Removal of the ignition key actuates the steering lock. Slight movement of the steering wheel may be needed to engage the lock fully (see Section 4). Always remove the keys when leaving the vehicle. Leaving the key in position 'I' will discharge the battery.



### Unlocking using the black-headed key (D)

To unlock the luggage compartment when the doors are locked: Ensure the security system is disarmed before unlocking using the black-headed key. Insert the key and turn through 90° clockwise, return the key to the vertical position to remove. The luggage compartment is illuminated by two lights when the lid is raised.

**Note:** The green-headed 'valet' key will not unlock the luggage compartment.

The luggage compartment locks automatically when the lid is closed.

### Luggage compartment

The luggage compartment is locked and unlocked electrically in conjunction with the doors. It can also be unlocked by the unlock button on the key-ring transmitter, the remote release switch on the fascia and the black-headed key.

#### Unlocking using the key-ring transmitter (A)

**To operate:** Press the unlock button.

#### Luggage compartment remote release switch (B)

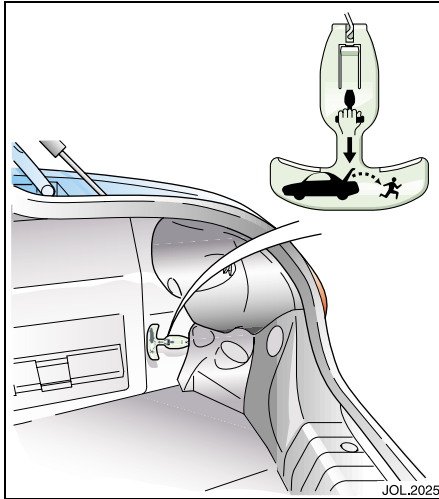
**To operate:** Press the switch to release the luggage compartment lid lock.

#### Luggage compartment remote release 'valet' switch (C)

The 'valet' switch is used to inhibit the remote release switch to ensure the security of the luggage compartment.

When the 'valet' switch is pressed, the luggage compartment locks and can then only be unlocked with the black-headed key or by pressing the unlock button on the key-ring transmitter.

## 2-10 Security and locks



### Luggage compartment emergency release

Your vehicle is equipped with a mechanical interior luggage compartment release handle that provides a means of escape for children and adults in the event they become locked inside the luggage compartment.

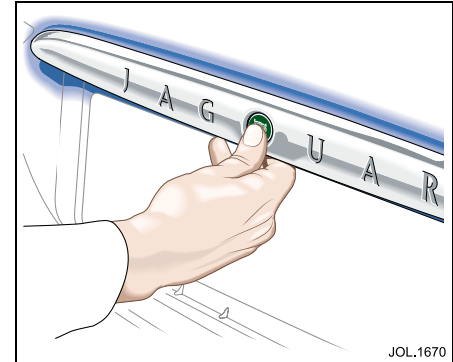
Adults are advised to familiarise themselves with the operation and location of the release handle.

To open the luggage compartment lid from the inside, pull the illuminated 'T'-shaped handle and push up the lid. The material that the handle is made of will glow for hours in the darkness of the luggage compartment following brief exposure to ambient light.



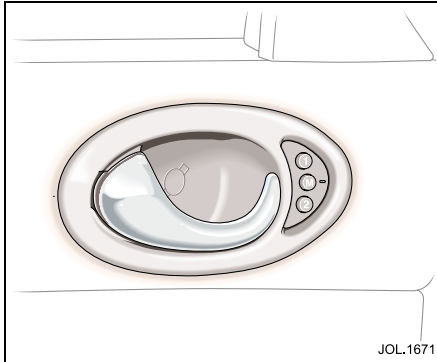
### WARNING:

- 1. Keep vehicle doors and the luggage compartment locked and keep keys out of a child's reach. Unsupervised children could lock themselves in an open compartment and risk injury. Children should be taught not to play in vehicles.**
- 2. On hot days, the temperature in the luggage compartment and vehicle interior can rise very quickly. Exposure of people or animals to these high temperatures for even a short time can cause death or serious heat-related injuries, including brain damage. Small children are particularly at risk.**



### Luggage compartment release button

To open the luggage compartment, press the badge button in the middle of the lid.



## Interior door lock operation

**To lock:** Press the door release lever inwards to lock both doors and luggage compartment.

**Drive-away door locking:** This feature is an additional occupant safeguard which locks all the doors and luggage compartment if they are unlocked when the gear selector is moved out of the 'P' or 'N' position. For this feature to operate, the ignition switch must be in position 'II', and all doors and the luggage compartment lid closed.

**To unlock:** Pull the door release lever.

## Alarms and audible signals

### Full alarm

Once armed, any of the following circumstances will create a full alarm state:

- Opening a door with a key, the alarm will be delayed for 7 seconds).
- Opening the luggage compartment with the key but with a 7 seconds delay.
- Opening the hood.
- Breaking any window or windscreen (if glass break sensing is fitted).
- If an invalid key is inserted into the ignition switch and turned to position 'I' or 'II'.
- Lifting or tilting the vehicle (if a tilt sensor is fitted).
- Pressing headlamp button on key-ring transmitter three times within 3 seconds produces the Panic Alarm.

### Error tone

The sounder gives a short, high-pitched tone whenever one of the following conditions is present:

- If any door is open when an attempt to 'arm' the security system is made.
- The luggage compartment or the hood is not properly closed when an attempt to 'arm' the security system is made.
- If a key is in the ignition switch when a transmitter button is pressed.
- If there is an electrical failure within the glass breaking sensing system (if fitted) or the tilt sensing system (if fitted) or an attempt to 'disarm' the security system is made.

### Audible signals

An audible signal will sound when:

- The 'valet' switch is pressed with the luggage compartment closed or when in valet mode and the interior luggage compartment release button is pressed.

## 2-12 Security and locks

---

### Security system features

#### Valet key locking

Before locking the vehicle and handing the green-headed 'valet' key to a parking attendant, press the valet switch to inhibit the luggage compartment interior release switch. The vehicle can then be parked by an attendant who can lock the vehicle after parking, but cannot open the luggage compartment. The luggage compartment can then only be unlocked with the black-headed key or the key-ring transmitter.

#### Panic alarm (Dealer option)

When in or near the vehicle, the alarm can be set off to deter a would-be offender. This feature will also unlock the doors. For this feature to operate, the key must **not** be in the ignition switch.

Pressing the headlamp button on the key-ring transmitter three times within 3 seconds will activate the 'Panic Alarm'.

The Panic Alarm will sound for the normal full alarm period. The alarm is stopped by turning the ignition key to position 'I' or 'II'.

The key-ring transmitter cannot be used to cancel the Panic Alarm, this prevents unauthorised use.

#### Remote headlamp convenience

By pressing the key-ring transmitter button with the dipped headlamp symbol once, the headlamps will come on for 25 seconds, unless the headlamp button is pressed again, or if the key is inserted in the ignition switch and turned to position 'II'.

#### Passive arming (Dealer option)

#### Passive arming will not lock the doors, it only arms the security alarm system.

Passive arming, if preset by a Jaguar Dealer, will automatically arm the vehicle alarm system 30 seconds after the last protected entry (door, luggage compartment or hood) is closed following the key being removed from the ignition switch.

When passive arming occurs the direction indicators will flash once and a single tone will be heard. The red security light on the gear selector surround will start to flash and will continue for as long as the vehicle is armed.

Opening a protected entry causes a warning sound which continues for 15 seconds before the vehicle goes into the full alarm state.

If the system has been armed passively it can be disarmed by either the key-ring transmitter, or by switching the ignition to position 'I'.

**Note:** The security system will not passively arm if a key is in the ignition switch or if any protected entry is open.

#### Perimeter sensing

Perimeter sensing is put into operation every time the vehicle is armed. This feature sounds the alarm if any unauthorised opening of doors or luggage compartment or hood occurs.

**Caution:** Do not obscure the vision of the interior sensors. Any obscuration can affect the performance of the sensors.

### **Battery tampering alarm and restart procedure**

This feature prevents the security system being bypassed by battery disconnection.

If the battery is disconnected when the security system is either armed, disarmed or in the full alarm state, the security system will automatically resume the vehicle state before disconnection when the battery is reconnected.

### **Tilt sensing protection (where fitted)**

This feature protects against unauthorised towing away or jacking up. As soon as an attempt is made to tilt the vehicle, to tow away or jack the vehicle up, if the system is 'armed', the security system will enter the full alarm state.

If the tilt sensor operates the alarm when the vehicle is being transported by road, rail or sea, do not unlock the vehicle, the alarm will sound for a limited time only.

### **Battery back-up sounder**

On certain markets a separate battery back-up sounder is fitted. This device will sound an alarm if the vehicle battery or the sounder is disconnected when the security system is armed.

**Caution:** Do not disconnect the vehicle battery or sounder if the security system is armed as this will cause the alarm to sound. To switch off the alarm, reconnect the vehicle battery or sounder and disarm the security system in the usual manner.

### **Engine immobilisation**

The ignition key has an engine immobilising device in the plastic head. Engine immobilisation occurs automatically when the ignition key is turned to position '0'.

**Caution:** Should the ignition key be lost, a new key can be obtained and programmed to the vehicle by a Jaguar Dealer who will ask for proof of vehicle ownership. It is advisable to notify a Dealer as soon as a key is lost or stolen and have the remaining key(s) reprogrammed. This will then prevent the lost or stolen key from being used to start the engine.

## 2-14 Security and locks

---

### Radio frequency

The radio frequency remote system operates on a frequency subject to USA Federal Communications Commission (FCC) rules.

The device complies with Part 15 of the FCC rules and RSS-210 of the Industry Canada. Operation is subject to the two following conditions:

1. The device may not cause harmful interference.
2. This device must accept any interference received, including interference that may cause undesired operation.

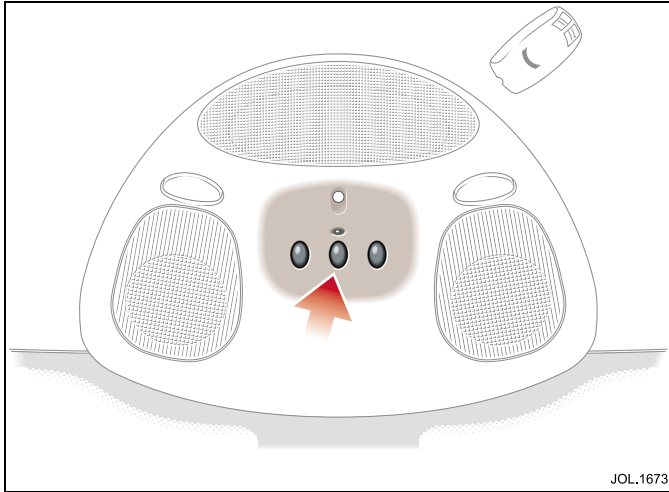
The key transmitter radio frequency approval numbers for the USA and Canada are as shown below:

**USA** – NHVWB1U241

**Canada** – 3495 103 2304

The manufacturer is not responsible for any radio interference or TV interference caused by unauthorised modifications to this equipment. Changes or modifications not expressly approved by the party responsible for compliance could void the user's authority to operate the equipment.

**Caution:** The key-transmitter may suffer interference from other legal users of this radio frequency band, such as radio amateurs, medical equipment, remote controls or alarm systems. To lock or unlock the vehicle in such a situation, either use a key or operate the key transmitter as close to the security antenna as possible.



### HomeLink® Universal Transceiver

The HomeLink® Universal Transceiver (where fitted) is located in the roof console. The transceiver can be programmed to transmit the radio frequencies of up to three different transmitters used to activate garage doors, gates, home lighting, security systems, or other radio frequency operated devices.

For further information, or for assistance, contact your Jaguar Dealer, or the supplier by phone or via the internet. For details, see **Information and assistance** on page 2-17.



#### WARNING:

1. Do not use the transceiver with any garage door opener that lacks the safety stop and reverse feature as required by safety standards. A garage door opener which cannot detect an object, signalling the door to stop and reverse, does not meet current safety standards. Using a garage door opener without these features increases risk of serious injury or death.
2. When programming the transceiver to a garage door opener or entry gate, make sure that people, the vehicle and objects are out of the way to prevent potential harm or damage as the gate or garage door will activate during the programme.

## 2-16 Security and locks

---

### Programming

**Note:** For best results, fit a new battery to the hand-held transmitter of the garage door opener (or other device) before programming. If your garage door opener receiver (located in the garage) is equipped with an antenna, ensure that the antenna is hanging straight down.

1. Switch off the engine.
2. Press and hold the two outermost buttons (1 and 3) on the transceiver, releasing only when the indicator light begins to flash after 20 seconds.

**Note:** Do not repeat step 2 when programming the additional buttons.

3. Hold the end of the hand-held transmitter approximately 2 to 6 inches (50 to 150 mm) away from the transceiver in the roof console, keeping the indicator light in view.

Using both hands, simultaneously push the hand-held transmitter button and the chosen transceiver button (1, 2 or 3). The transceiver indicator light will flash, first slowly and then rapidly. When the indicator light flashes rapidly, release both buttons. The rapid flashing light indicates successful programming of the frequency signal.

4. Press and hold the programmed transceiver button to activate the programmed device and release when the device begins to activate.
5. If, after 90 seconds, the indicator light does not flash rapidly, release both the transceiver and the hand-held transmitter buttons and repeat the procedure starting with Step 2. However, position the hand-held transmitter at a different angle and/or distance.
6. The device must now be 'trained' for operation from the transceiver. See **Training procedure** on page 2-17.

### Programming hints and tips

If the device does not operate you may need to complete the steps outlined in the section **Rolling code programming** on page 2-17.

Some entry gates and garage door openers may require you to replace Step 4 with the procedures in the section **Gate programming**.

If you are programming a rolling code equipped device, continue with the procedures outlined in the section **Rolling code programming** on page 2-17.

**Note:** Keep the original transmitter for future use or programming procedures if, for example, you purchase a new vehicle.

**Caution:** It is recommended that when you sell or dispose of the vehicle, the programmed transceiver buttons be erased for security purposes.

### Canadian programming

#### Gate programming

Canadian frequency laws, and the technology of some entry gates, require you to press and re-press (cycle) the hand-held transmitter button every two seconds during programming.

Continue to press and hold the desired transceiver button while you cycle your hand-held transmitter until the indicator light flashes rapidly.

**Note:** When programming a garage door opener or entry gate, unplug the device during the 'cycling' process to prevent possible motor failure.

## Rolling code programming

Rolling code garage door openers (or other rolling code devices) which are 'code protected' may be determined by the following:

- Reference the device owner's instruction manual for verification.
- The hand-held transmitter appears to programme the transceiver correctly, but does not activate the garage door.
- Press and hold the programmed transceiver button. The device has the rolling code feature if the transceiver indicator light flashes rapidly and then turns solid after two seconds.

To programme a garage door opener or other device with the rolling code feature, follow these steps after completing the section **Programming** on page 2-16.

## Information and assistance

If you would like additional information on the HomeLink® Universal Transceiver, compatible products or to purchase other accessories such as the HomeLink® lighting package, contact your Jaguar Dealer, or HomeLink at 1-800-355-3515 or on the Internet at [www.homelink.jci.com](http://www.homelink.jci.com).

## Training procedure

**Note:** The aid of a second person may make the following training procedure quicker and easier.

1. Locate the training button on the garage door opener receiver (or other device). Exact location and colour of the button may vary. If there is difficulty locating this button, refer to the instruction manual supplied with the device.

**Note:** Following step 2 there are 30 seconds in which to initiate step 3.

2. Firmly press and release the training button on the receiver which will activate the training light.
3. Firmly press and release the transceiver button. Press and release the transceiver button a second time to complete the training process. Some devices may require you to do this step a third time to complete the training.

The device should now recognise the transceiver signal and activate when the transceiver button is pressed.

The remaining buttons may now be programmed if this has not been previously done.

## Reprogramming a transceiver button

To programme a device using a button that has previously trained, follow these steps:

1. Press and hold the desired transceiver button. Do not release until step 4 has been completed.
2. When the indicator light begins to flash slowly (after 20 seconds), position the hand-held transmitter 2 to 6 inches (50 to 150 mm) away from the transceiver surface.
3. Press and hold the hand-held transmitter button.
4. The transceiver indicator light will flash, first slowly and then rapidly. When the indicator light begins to flash rapidly, release both buttons.

The previous device has now been erased and the new device can be activated by pushing the transceiver button that has just been programmed. This procedure will not affect any other programmed transceiver buttons.

## 2-18 Security and locks

---

### Erasing programmed transceiver buttons

Individual buttons cannot be erased, however, to erase all three programmed buttons:

1. Press and hold the two outermost buttons until the indicator light begins to flash after 20 seconds.
2. Release both buttons.

The transceiver is now in the train, or learning, mode and can be programmed at any time following steps 3 and 4 in the section **Programming** on page 2-16.



#### **WARNING:**

**The manufacturer is not responsible for any radio or TV interference caused by unauthorised modifications to this equipment. Such modifications could void the user's authority to operate the equipment.**

### Approvals for radio transceiver

Country	Approval No.
USA	CB2JAGHL3