

Inertia switch

In the event of an accident, an inertia switch may trip, isolating ignition controlled circuits, including fuel pump operation. Simultaneously, the doors will automatically unlock. Once the switch has tripped it must be reset before attempting to restart the engine.

Note: The doors will not unlock if the inertia switch is tripped when the ignition switch is in position '0'.

The inertia switch is located behind the trim on the left-hand side of the vehicle, forward of the door post below the fascia. The reset button is parallel with the trim panel top edge.

Resetting the switch



WARNING:

To avoid the possibility of fire or personal injury, do not reset the inertia switch if you see or smell fuel.

If no fuel leak is apparent, reset the inertia switch as follows:

1. Turn the ignition switch to position '0'.
2. Press down the rubber reset button on the top of the inertia switch.
3. Turn the ignition switch to position 'II', pause for a few seconds, then return the key to position '0'.
4. Make a further check for fuel leaks.

6-2 Roadside emergency

Emergency starting

Rolling start

A start by pushing or towing cannot be achieved on a vehicle with automatic transmission.

Emergency starting using Jump leads

Both the booster and discharged battery should be treated with great care when using jump leads. Always use high quality leads capable of carrying the starter current of the vehicle to be started.

Before commencing, the following precautions must be taken:

1. When the battery of another vehicle is being used, ensure that the vehicles do not touch, or remove the charged battery and place near to, not on, the vehicle with the discharged battery.
2. Ensure that both vehicles have all electrical services OFF, the parkbrake is ON and the transmission is in Park.

Where the jump leads are of a different colour, e.g. red and black, use red for positive (+). This aids identification and helps to avoid crossing positive (+) to negative (-). Take extra care to avoid crossing the polarity when using cables of the same colour.

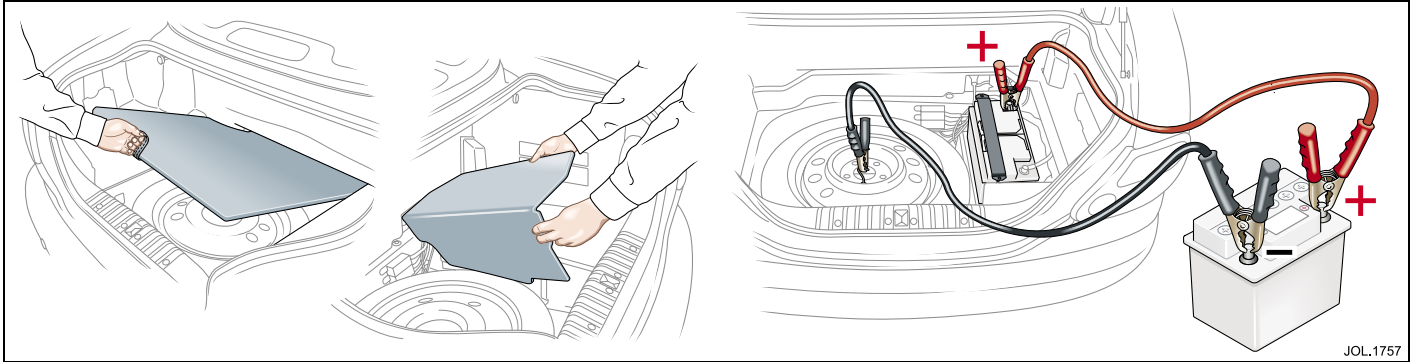
Caution:

1. **If using a jump start vehicle, under no circumstances should the vehicles come into contact with each other. This could establish an earth connection, which may cause sparks and damage.**
2. **Do not run the jump start vehicle's engine when boost starting a Jaguar Vehicle. If the jump start vehicle's engine is running and the jump leads are disconnected, damage to the Jaguar vehicle's electrical system will result.**
3. **The booster battery voltage must not exceed 12 volts.**

The following procedure must be followed exactly, being careful not to cause sparks:

1. Apply the parkbrake, select Park and turn off all the vehicle's electrical services.
2. Remove the luggage compartment floor panels.
3. Unclip the positive (+) terminal cover.

4. Attach one end of the red jump lead to the positive (+) terminal of the **booster** battery and the other end to the positive terminal of the discharged battery. **Make sure that a good connection is made. Do not allow the vehicles to touch.**



JOL.1757

Emergency starting using Jump leads (continued)

Caution: Do not connect the negative jump lead directly to the negative (-) terminal of the discharged vehicle.

5. Attach one end of the black jump lead to the negative (-) terminal of the **booster** battery and the other end to an earth point on the vehicle being started. (Use the spare wheel retaining bolt as shown.) The earth point must be at least 12 inches (305 mm) from the discharged battery. Make sure that a good connection is made.
6. When started allow the engine to idle for five minutes before disconnecting the cables.

7. Disconnect the black jump lead from the earth point and the booster battery negative (-) terminal. Disconnect the red jump lead from the positive (+) terminals of both batteries.

Note: Disconnection is done in the reverse order to the connecting procedure.

8. Refit the positive terminal cover.
9. Refit the luggage compartment floor panels.

6-4 Roadside emergency

Wheel changing and jacking

Introduction

In the event of a flat tyre, drivers should follow closely the procedure for wheel changing and jacking given in this section. The correct jacking points and how to locate them are shown. It is important that only the correct jacking points are used.

Where vehicles have the 'temporary-use' spare wheel, drivers should be aware of the limitations of its use.

Temporary-use spare wheel

Observe the following warnings before using the wheel:



WARNING:

- 1. Please note temporary-use spare wheel warning label. Adhere to instructions on the label. Failure to comply can be dangerous.**
- 2. When a temporary-use spare wheel is fitted, drive with caution and replace with the specified wheel and tyre as soon as possible.**

- 3. Do not fit more than one temporary-use spare wheel and tyre assembly at one time.**
- 4. The temporary-use spare wheel must be inflated to 60 lbf/in² (420 kPa, 4.2 bar, 4.3 kg/cm²).**
- 5. Temporary-use spare wheel, maximum speed is 50 mph (80 km/h).**

Maintenance information for the temporary-use spare wheel is the same as given for normal tyres in Section 7.

Spare wheel and jacking equipment

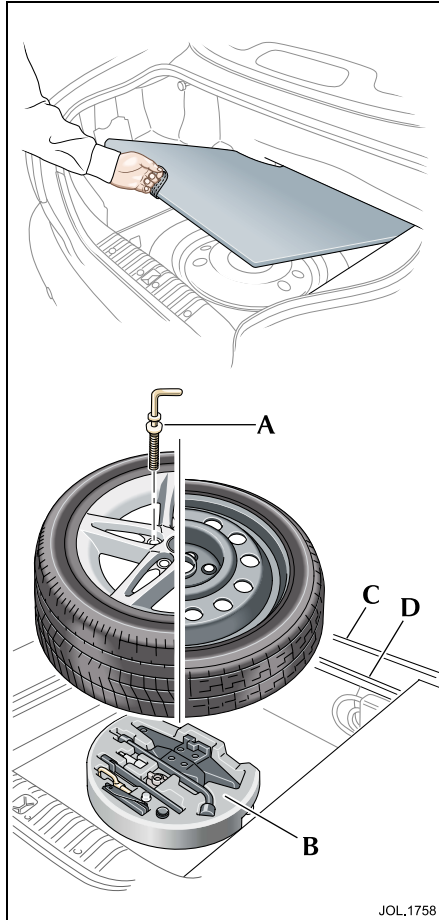
The spare wheel, jacking equipment and wheel chock are stored under the luggage compartment floor panel.

To remove the spare wheel, remove the luggage compartment floor panel and unscrew the retaining screw, as shown opposite (A).

The tray containing the jacking equipment kit can be removed from the luggage compartment by unscrewing the yellow securing bolt, as shown opposite (B).

The kit comprises: The jack; jack ratchet handle with socket extension; wheel nut wrench with telescopic extension; wheel chock; towing eye and a wheel locking nut extractor tube and key socket (where fitted).

Examine the jack occasionally, clean and grease the threads to ensure it is always ready for an emergency.



Spare wheel stowage

When the temporary-use spare wheel is being used, stow the replaced road wheel in the luggage compartment so that it fits over the jacking equipment tray.

Reposition the luggage compartment floor panel in the upper location slots (C).

When the temporary-use spare wheel is returned to the luggage compartment, position the wheel with one stud hole directly over the yellow plastic bolt.

Fit the retaining screw through the stud hole into the bolt head and tighten down. Refit the luggage compartment floor panel in the lower position (D).

Note: Remove the centre badge, see page 6-9.

20 inch diameter road wheels cannot be stored beneath the luggage compartment floor panel. Use the plastic stowage bag and gloves provided in the luggage compartment.



WARNING:
Keep plastic bags away from children.

Wheel changing and jacking

Be prepared for a flat tyre. Know where equipment is stowed and read the wheel changing and jacking instructions carefully.

Stopping the vehicle

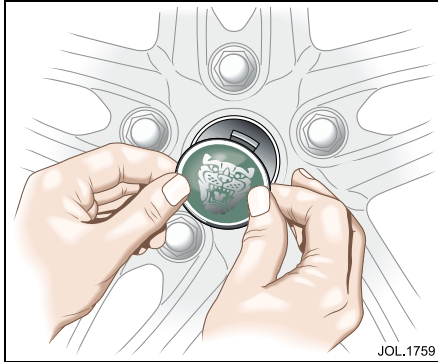
Pull off the road completely, clear of all traffic and park on as level ground as possible. Switch on hazard warning lights.



WARNING:
It can be dangerous to change a wheel when the vehicle is on a slope or soft, uneven ground.

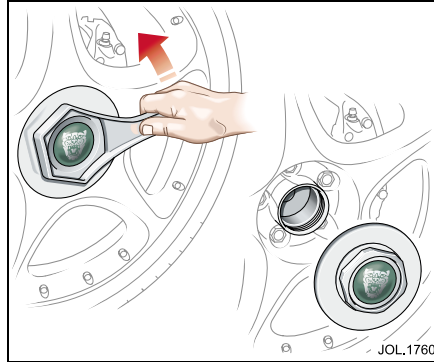
Remove the temporary-use or full size spare wheel to obtain the jack and wheel changing tools.

6-6 Roadside emergency



Alloy wheels with centre badge

When changing wheels, carefully remove the centre badge and transfer it to the replacement wheel (when a full size spare wheel is used).



Alloy wheels with hexagon centre wheel nut covers

Remove the cover with the plastic spanner supplied with the spare wheel jacking equipment.



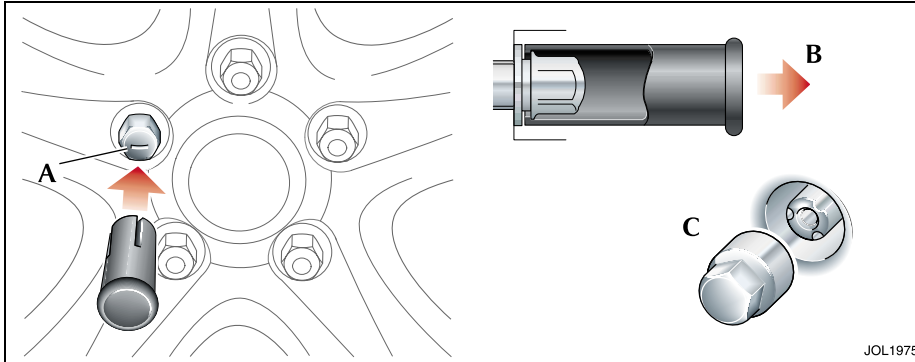
Loosening the wheel nuts

Always slightly loosen the wheel nuts before raising the vehicle.

The above label showing correct use of the wheel nut wrench is printed on its shaft.

(A) – WHEEL NUT REMOVAL

(B) – WHEEL NUT TIGHTEN



Locking wheel nut security coding

Locking wheel nuts have a letter stamped on their upper surface. The key socket is stamped with a corresponding number. Only key sockets with the correct matching number will fit the locking wheel nut.

Should a new key socket be required, note the letter on the locking wheel nut and contact your Jaguar Dealer. Proof of vehicle ownership will be required.

Removing locking wheel nuts (where fitted)

Some vehicles are fitted with one locking wheel nut on each wheel. These can only be removed using the extractor tube and key socket from the jacking equipment tray.

The locking wheel nut is provided with a cover which makes it visually similar to standard wheel nuts. The top of the cover has an indentation (A) to aid identification.

Push the extractor tube firmly over the locking wheel nut cover, as shown at (B), until it is fully located.

Withdraw the extractor tube to remove the cover.

Fit the key socket over the locking wheel nut as shown at (C).

Fit the wheel nut wrench over the key socket and loosen the locking wheel nut.

6-8 Roadside emergency

Wheel changing

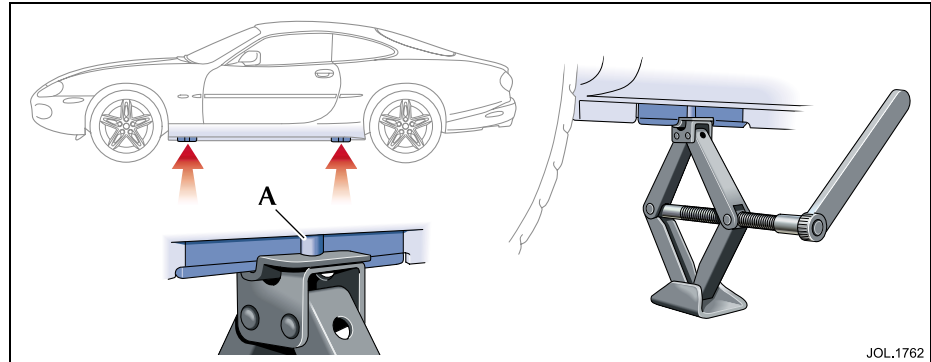
1. Ensure that all passengers are in a safe place, clear of the vehicle.
2. Apply the parkbrake and select gear position 'P' (Park).
3. Ensure that the jack is placed on firm and level ground.

Note: When one rear wheel is lifted off the ground the selection of transmission 'P' (Park) position will not prevent the vehicle from moving and possibly slipping off the jack.



WARNING:

1. **Before attempting to lift the vehicle with the jack, chock the wheel diagonally opposite to the wheel being replaced to prevent the vehicle from rolling when jacked up. A wheel chock is supplied with the jacking equipment for this purpose.**
2. **Never work under the vehicle using only the jack as a support, always use axle stands or suitable supports under the jacking points.**



JOL.1762

Before raising the vehicle slacken but do not remove the wheel nuts.

Observe the instructions printed on the jack.

Use the jack only for lifting the vehicle during wheel changing, and only use the jack which is stored in the vehicle.

Do not start or run the engine while the vehicle is only supported by a jack.

There are four jacking points, two each side of the vehicle on the underside of the floor. These are reinforced metal plates (A) attached to the sill near each wheel.

Caution: Ensure before raising the vehicle that the jack is correctly positioned to avoid any damage to the vehicle sills or sill panels. Use only the correct jacking points, never use bumpers or any other part of the body to lift the vehicle.



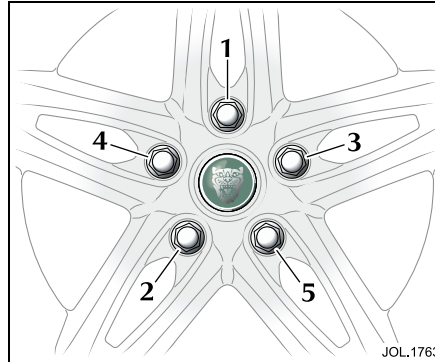
WARNING:

1. Do not attempt to lift the vehicle unless the jack head is fully engaged in the jacking point.
2. Ensure that the parkbrake is applied.

Place the jack squarely beneath the appropriate jacking point. Ensure that the jack head is fully engaged. Carefully raise the vehicle by turning the handle. Stop jacking the vehicle when the tyre just clears the ground. Minimum tyre lift gives maximum vehicle stability.

Remove the wheel nuts and the wheel.

When changing the alloy road wheels, transfer the centre badge to the replacement wheel (when a full size spare wheel is used). Using the plastic tipped end of the wheel nut wrench handle from the inside of the wheel, push the centre badge from its housing. If the temporary-use spare wheel is to be fitted, keep the centre badge safely and fit it to the repaired full size wheel when it has been refitted.



Fit the spare wheel and loosely secure with the wheel nuts.

Using the wheel nut wrench, lightly tighten the wheel nuts alternately using the sequence shown in the illustration.

Lower the jack and tighten the wheel nuts alternately, DO NOT OVERTIGHTEN.

At the earliest opportunity have the wheel nuts tightened with a torque wrench to 65 – 75 lb.ft (88 – 102 Nm).

This torque must not be exceeded.

Refitting centre badge (where fitted)

Press fit the centre badge into position on the wheel.

Refitting hexagon centre wheel nut cover (where fitted)

Tighten the hexagon centre wheel nut cover to the wheel with the plastic spanner supplied with the spare wheel jacking equipment.

Stowing the equipment

Stow the replaced road wheel in the luggage compartment, position the wheel and secure with the retaining nut.

Place the storage tray with the jack and wrench over the wheel.

Reposition the luggage compartment floor panel.

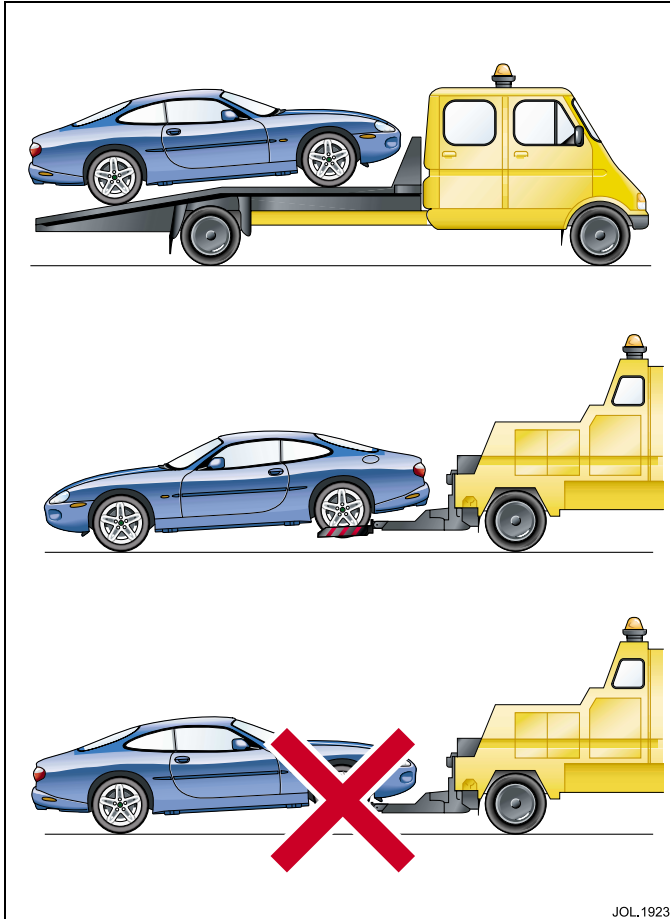
Note: Examine the jack occasionally and clean and grease the threads to ensure it is always ready for an emergency.



WARNING:

When the temporary-use spare wheel has been fitted, drive with caution and replace with the specified wheel and tyre as soon as possible.

6-10 Roadside emergency



JOL.1923

Vehicle recovery

The preferred vehicle recovery method is by using a flat bed transporter or rear suspended tow.

Caution:

1. If the vehicle has defective transmission, to prevent further damage, it must be towed with the rear wheels clear of the ground.
2. Ensure that the recovery team do not tow with sling-type equipment since damage to the bodywork may result.
3. Do not tow vehicle by suspending the front end.

Transporting

If the vehicle is being transported on a trailer or vehicle flat bed transporter, the parkbrake must be applied, the wheels chocked and the gear selector lever moved to position 'N' or 'D' but NEVER to 'P'.

The vehicle must be securely tied down to the transporter or trailer.

Towing eyes



WARNING:

- 1. The vehicle must not be driven with a towing eye fitted to a front tow point.**
- 2. When the engine is not running the steering and brakes will no longer be power assisted. Therefore, be prepared for relatively heavy steering and the need for greatly increased brake pedal pressure.**

Caution: The towing eyes are not suitable for 'solid bar towing'. Care must be taken to avoid damaging the bumpers and front apron.

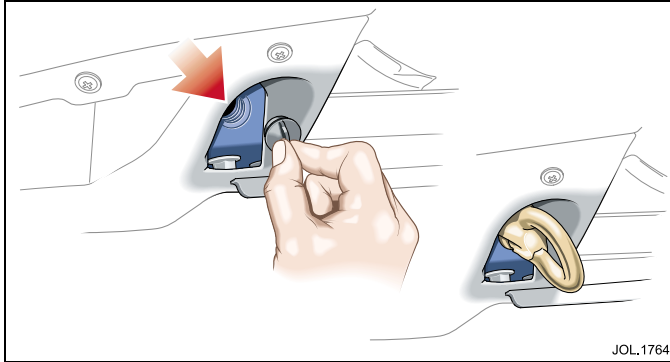
A removable towing eye is provided for use at the front or rear of the vehicle. The towing eye has a left-hand thread and must be screwed in an anti-clockwise direction when fitting. When not in use it is stowed with the jacking equipment kit, see page 6-4.

Always obey towing regulations: In certain countries the registration number of the towing vehicle and an 'ON TOW' sign or warning triangle must be displayed in a prominent position at the rear of the vehicle being towed.

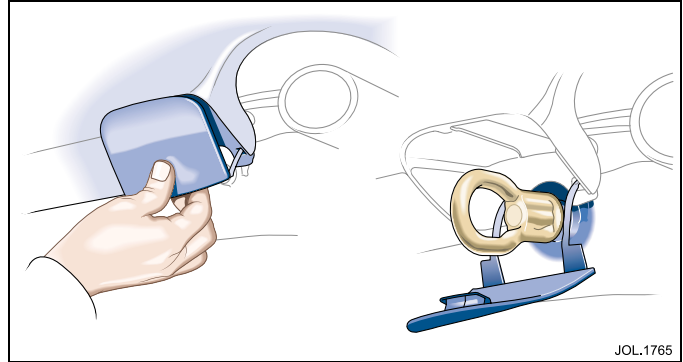
When being towed, the vehicle's gear selector lever must be in neutral (position 'N') with the ignition key turned to position 'II' to release the steering lock and render the indicators, horn and brake lights operational.

Vehicles may be towed for a SHORT DISTANCE maximum 0.5 miles (0.8 kilometres) with the gear selector lever in position 'N', provided a speed of 30 mph (48 km/h) is not exceeded).

6-12 Roadside emergency



Front fitting: To use at the front of the vehicle, remove the rubber blanking plug from the front crossmember on the driver's side and screw the eye into the threaded drilling. The blanking plug is a push-fit in the towing eye thread.



WARNING:

Avoid body contact with a hot exhaust pipe when fitting the eye to the rear towing point.

Rear fitting: To access the rear tow position, unclip the bumper cover by pulling the lower edge out slightly and then downwards. Screw the towing eye into the threaded body fixing.

When refitting the cover, first insert the tab at the top of the cover before clipping the lower edge into position.

Bulb renewal

It is important that only Jaguar bulbs of the type specified on page 6-18 are used when renewing bulbs.

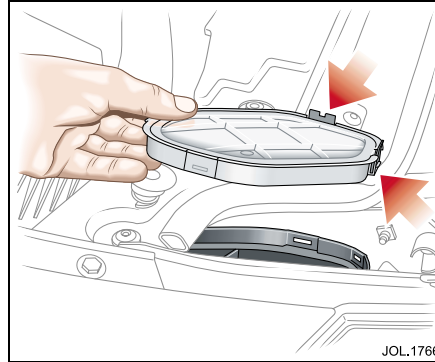
Before renewing bulbs, switch off the ignition and light switches.

Front fog lamp – bulb renewal

It is recommended that the front fog lamp bulbs are renewed by a Jaguar Dealer.

Headlamp – bulb renewal

Caution: These bulbs are halogen types and will be damaged if touched by hand or contaminated with oil or grease. It is important to use clean gloves or cloth when handling a bulb which is to be used again. A contaminated bulb may be cleaned with methylated spirit before refitting.



Main beam, front direction indicator and side light access

Access to the headlamp unit for main beam, front direction indicator and side light bulb renewal, is through the clear hexagonal cap at the rear of the headlamp unit.

Open the hood and remove the hexagonal cap by squeezing the two lower clips, arrowed above.

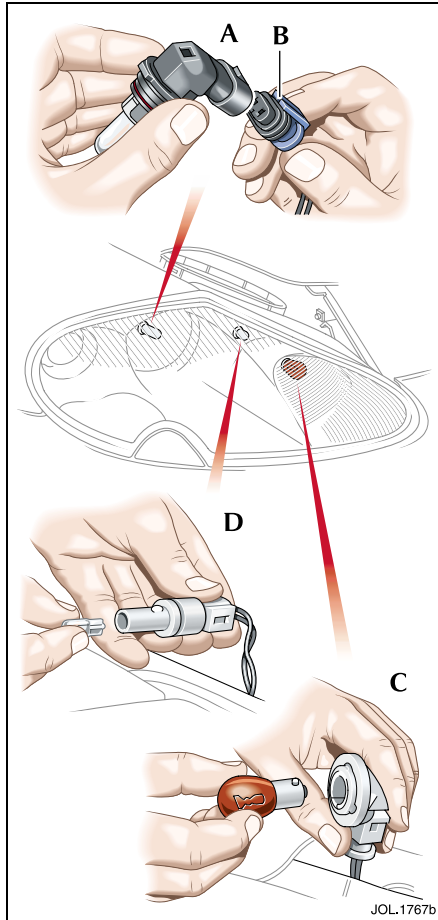
When refitting the hexagonal cap make sure the seal is in place.

High intensity discharge (HID) units

If the High Intensity Discharge (HID) Xenon light units, type D1S, 35W, fail, contact your Jaguar Dealer as soon as possible.

In the unlikely event of a fault with the Xenon headlamp dynamic levelling system, the Xenon headlamps will automatically be levelled to a default position to avoid causing headlamp glare to other road users. Should this occur, please contact your Jaguar Dealer as soon as possible.

6-14 Roadside emergency



To change any of the bulbs shown on this page, first remove the hexagonal access cap as described on page 6-13.

After changing any of the bulbs shown on this page, refit the hexagonal access cap as described on page 6-13.

Main beam – bulb renewal (A)

Rotate the bulb holder anticlockwise by a quarter of a turn to remove from the headlamp unit. Lift the plastic spring clips (B) and remove the bulb assembly from the harness connector. Remove the bulb and fit a new one of the correct type, see page 6-18. Refit the bulb assembly to the harness connector. Refit the assembly into the headlamp unit.

Front direction indicator – bulb renewal (C)

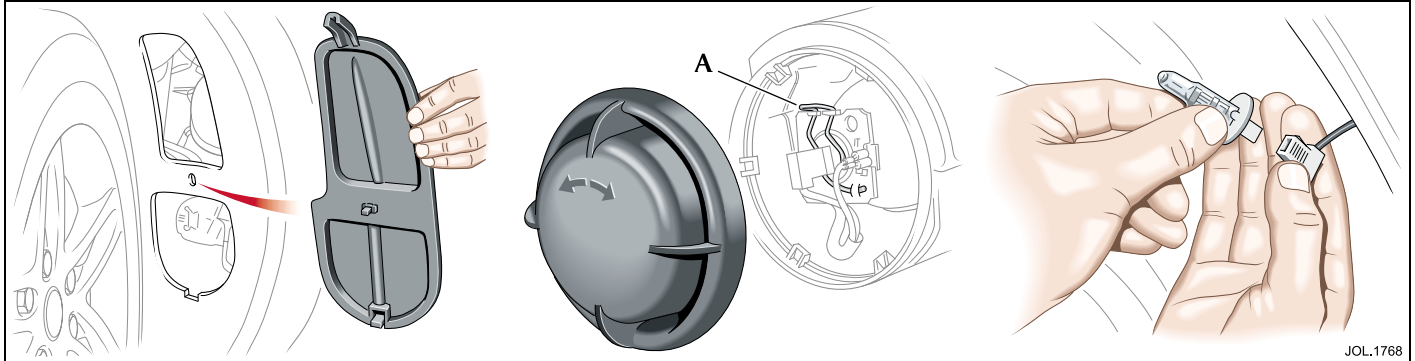
Turn the direction indicator bulb holder a quarter turn and remove. Remove the bulb and fit a new one of the correct type.

Front parking (side) light – bulb renewal (D)

Rotate the bulb holder a quarter turn and remove from the headlamp.

Pull the bulb from the holder and fit a new one of the correct type, see page 6-18.

Reposition the bulb holder in the headlamp unit and rotate a quarter turn.



JOL.1768

Dip beam bulb access

Access to the dip beam bulb is as follows:
Turn the front wheels to allow free access to the wheel arch.

Remove the wheel arch access panel by rotating the centre fastener and lifting the lower retaining clip.

Turn the cap at the back of the dip beam a quarter turn anticlockwise and remove.

When refitting the cap make sure the seal is in place.

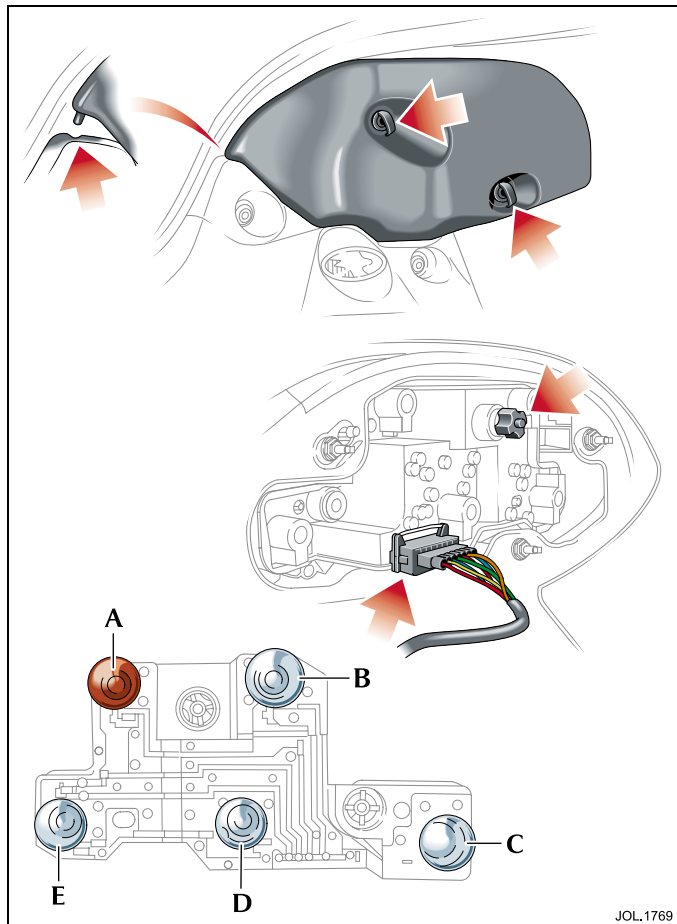
Dip beam – bulb renewal

Push the spring retainer (A) to the right and rearwards to release. Remove the bulb holder.

Remove the bulb and fit a new bulb of the correct type, see page 6-18.

Refit the bulb holder and the spring retainer.

6-16 Roadside emergency



JOL.1769

Rear light assembly – bulb renewal

Ensure that the lights and ignition switch are OFF before removing any bulbs. Open the luggage compartment.

Unscrew the two fasteners securing the light assembly cover (top figure). Remove the cover, noting the cover locating pin.

Press the release bar on the electrical connector (centre figure) and carefully pull off the connector. Unscrew the knurled nut securing the bulb carrier and remove the carrier.

The left-hand bulb carrier is shown and the bulbs fitted are:

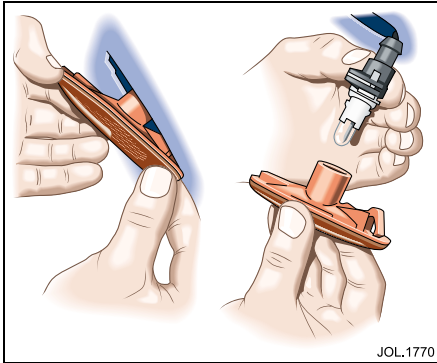
- Direction indicator (A).
- Reversing light (B).
- Fog light (C).
- Tail light (D).
- Stop and tail light (E).

Remove the faulty bulb and fit a new one of the correct type, as specified on the bulb carrier and the bulb chart (see page 6-18).

Note that 12V, 21W/5W stop/tail bulbs are fitted in positions (E) and (D) but the stop light in position (D) is not used.

Refit the bulb carrier and secure with the knurled nut. Carefully plug in the electrical connector.

To refit the rear cover, insert the cover locating pin, close the cover and secure with the two screw fasteners.



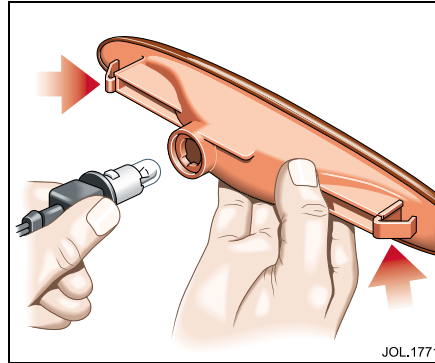
Side repeater flasher – bulb renewal

Remove the light unit from the front wing panel by pressing the unit forward or rearward to compress the spring clips behind the panel. This will allow the unit to be removed.

Twist the bayonet bulb holder anticlockwise and remove. Pull out the bulb and fit a new one of the correct type, see page 6-18.

Refit the bulb holder.

Refit the lamp unit into the front wing.



Side marker light – bulb renewal

To remove the side marker lenses it is necessary to compress the spring clips at the back of the lens. Access to the rear of the front side marker is through the wheel arch access panel.

To access the back of the rear side marker it is necessary to reach up behind the bumper cover. Because of the proximity of the exhaust system, make sure the exhaust is cold when renewing the rear side marker bulb.

Twist the bulb holder anti-clockwise and remove. Pull out the bulb and fit a new one of the correct type, see page 6-18.

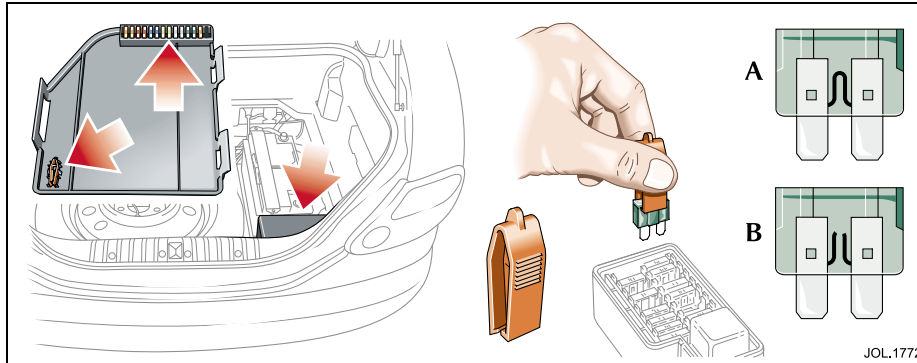
Refit the bulb holder. Press the unit into place in the front wing/bumper cover.

6-18 Roadside emergency

Bulb chart

Description	Capacity	Type
Flasher side repeater.	12V 5W	Capless long life.
Fog lamp – front.	12V 55W	Halogen H3 long life.
Fog light – rear guard.	12V 21W	Bayonet long life.
Front direction indicator.	12V 21W	Bayonet amber long life.
Front parking (side) light.	12V 5W	Capless long life.
Headlamp – dip.	12V 55W	Halogen H1 long life.
Headlamp – main beam.	12V 60W	Halogen HB3 or HB3A when fitted with Xenon dip.

Description	Capacity	Type
Number plate light.	12V 5W	Capless long life.
Rear direction indicator.	12V 21W	Bayonet amber long life.
Reverse light.	12V 21W	Bayonet long life.
Side marker light (where fitted).	12V 5W	Capless long life.
Stop/tail lights (The stop lights in the outer positions are not used.)	12V 21/5W	Bayonet long life.



Push the tool on to the suspect fuse and withdraw it.

If the wire in the fuse is broken, the fuse has blown.

(A) – Fuse in good condition.

(B) – Blown fuse.

Fit a new fuse using the tool.

Fuses and fuse boxes

Fuse failure is signalled by an inoperative circuit.

Do not fit a new fuse if damage to the wiring is found; contact a Jaguar Dealer. After renewing a fuse have the circuit checked by a Jaguar Dealer.

Spare fuses and a special tool for removing the fuses are supplied underneath the electrical carrier lid in the luggage compartment.

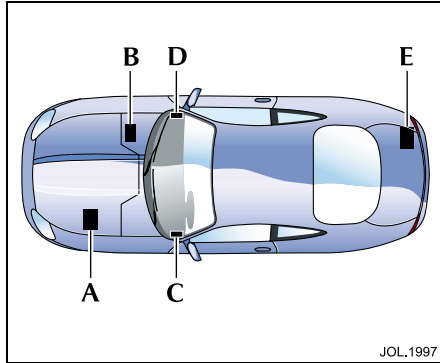
Use only the spare fuses supplied. Replace the spare with a Jaguar approved fuse of the same amperage rating.

Checking and renewing a blown fuse

Make sure the new fuse is the correct rating (amperage). Fuses are colour coded according to the amperage and the rating is also marked on each fuse. The colour code is as follows:

TAN	5 amp
RED	10 amp
LIGHT BLUE	15 amp
YELLOW	20 amp
CLEAR	25 amp
LIGHT GREEN	30 amp
BRIGHT ORANGE	40 amp

6-20 Roadside emergency



Fuse box locations

There are five separate fuse boxes fitted to the vehicle, each one containing fuses protecting a different group of circuits.

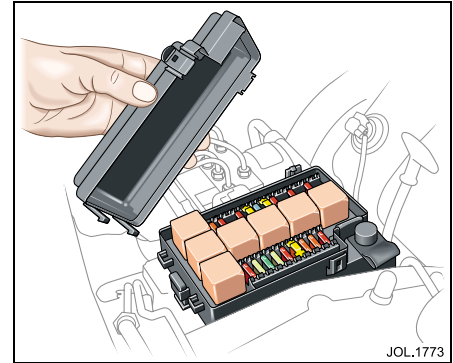


WARNING:

1. Do not fit a fuse of a different amperage from that fitted. The electrical circuits may become overloaded with the subsequent possibility of a fire.
2. No attempt should be made to repair a fuse that has blown. This may cause a fire hazard or serious damage elsewhere in the electrical circuit.

The locations are as follows:

- (A) – Engine compartment fuse box – Left-hand side, behind the windscreen washer reservoir.
- (B) – Engine management fuse box – Passenger's side, within bulkhead extension.
- (C) – Fascia fuse box – Driver's side, on the end of the fascia behind the removable panel.
- (D) – Fascia fuse box – Passenger's side, on the end of the fascia behind the removable panel.
- (E) – Electrical carrier fuse box – Luggage compartment.



Engine compartment fuse boxes

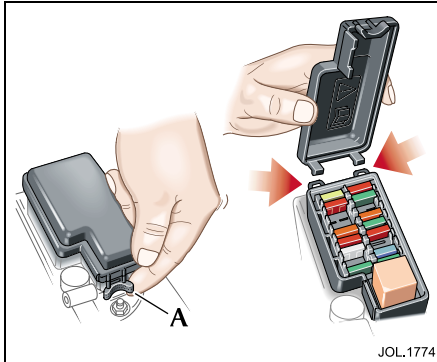
There is one fuse box in the main engine compartment, located on the left-hand side, behind the windscreen washer reservoir.

Caution: When the fuse box lid is removed, take care to protect the box from moisture, and refit the lid at the earliest opportunity.

Remove the fuse box lid by pressing the retaining lugs and lifting.

When refitting, press the fuse box lid in the area of the retaining lugs until the lid engages.

The circuits protected are listed on page 6-25.



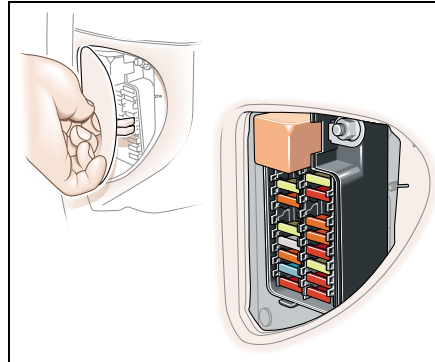
A second fuse box is situated within the bulkhead extension on the passenger's side.

Note: The bulkhead extension protects electrical components from the heat generated in the engine compartment.

Remove the fuse box lid by compressing and lifting the 'U' shaped latching mechanism (A).

To refit the fuse box lid, position into the slots and push down until the latching mechanism is engaged.

The circuits protected are listed on page 6-22.



Fascia fuse boxes

Fuse boxes are located at the extreme ends of the fascia, one on the driver's side and one on the passenger's side.

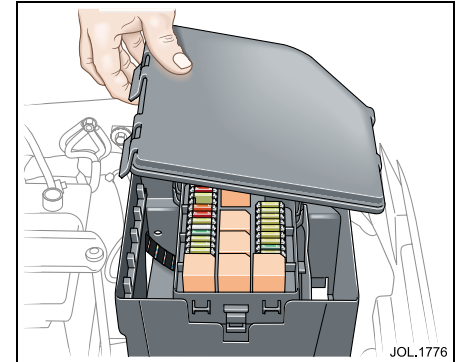
Pull the raised lip of the cover to access the fuse box.

The circuits protected are listed on page 6-23 and 6-24.

Luggage compartment fuse box

A fuse box is located in the electrical carrier which is situated to the rear of the battery.

A list of protected circuits and fuse ratings is given on the Fuse Ratings and Circuit chart on page 6-26.



Caution: When the carrier lid is removed, take care to protect the box from moisture ingress, and refit the lid at the earliest opportunity.

Remove the luggage compartment floor panel.

Remove the electrical carrier lid by pulling the retaining clips and pulling the lid upwards.

Spare fuses and fuse removal tool are supplied underneath the electrical carrier lid in the luggage compartment.

Reposition the lid and press down until the retaining clips engage.

The circuits protected are listed on page 6-26.

6-22 Roadside emergency

Fuse ratings and circuits

Engine management fuse box passenger side – within bulkhead extension

Fuse No	Ratings (amps)	Circuit
1	30	O ₂ sensor heaters bank 2 upstream and downstream.
2	–	Not used.
3	25	Starter solenoid.
4	5	Engine control module, transmission.
5	10	Ignition coils supply (via relay).
6	–	Not used.
7	–	Not used.
8	10	Air conditioning compressor clutch.
9	20	Throttle motor.
10	10	Engine control module.

Fuse No	Ratings (amps)	Circuit
11	30	O ₂ sensor heaters bank 1 upstream and downstream.
12	15	Intercooler water pump (supercharged).
13	–	Not used.
14	10	O ₂ sensor heaters relay, EGR valve, EVAP valve, throttle motor relay, AC compressor clutch relay, airflow meter, close canister valve, air flap solenoid (supercharged).
15	30	Windscreen left-hand heater.
16	5	Engine control module cooling fan.
17	30	Windscreen right-hand heater.
18	10	Injectors supply.

(B) on location illustration, page 6-20.

Fascia fuse box – driver’s side

Fuse No	Ratings (amps)	Circuit
1	20	Driver’s seat control module.
2	10	Door mirror heaters.
3	30	Windscreen wiper motors and relays.
4	5	Main instrument cluster (includes clock).
5	15	Body processor module lamp supply 2.
6	5	Centre console switches, key transponder module, roof header console.
7	15	Body processor module, gearshift interlock solenoid, ignition key lock solenoid, interior lighting, windscreen washer pump.
8	10	Steering column adjustment switches, driver’s seat switchpack, driver’s headrest module.
9	–	Not used.
10	10	Airbag control module, occupant spatial sensing module, driver’s safety belt buckle, Passenger safety belt buckle, passenger seat weight sensing module, occupancy sensing pad lamp.
11	20	Air conditioning driver’s blower motor.

Fuse No	Ratings (amps)	Circuit
12	10	Air conditioning, door mirror heaters relay, control module ignition supply, blower motor relays, power steering control module.
13	5	Diagnostic connector (battery).
14	10	Main instrument cluster, seat belt comfort solenoids, brake pedal switch (cruise cancel).
15	25	Driver’s door control module, transit relay.
16	5	Electrochromic interior mirror (where fitted), windscreen heater relays, gear selector, transmission performance mode switch, J gate linear switch, rain sensing system, telephone.
17	10	Accessory sockets (battery).
18	10	Engine control module.

(C) on location illustration, page 6-20.

6-24 Roadside emergency

Fascia fuse box – passenger’s side

Fuse No	Ratings (amps)	Circuit
1	20	Passenger seat control module.
2	10	Door locking actuators and relays.
3	–	Not used.
4	5	Driver and passenger door lock assemblies, driver and passenger mirror and door glass switchpacks, driver memory switchpack.
5	5	Telephone transceiver and RT connector.
6	10	Air conditioning control module, isolation relay.
7	20	Body processor module, steering column tilt and reach motors.
8	10	Passenger seat switchpack, passenger headrest module.
9	10	Radio/cassette head unit.
10	5	Telephone handset and transceiver.

Fuse No	Ratings (amps)	Circuit
11	20	Air conditioning passenger’s blower motor.
12	5	Radio/cassette head unit.
13	10	Dimmer control module.
14	20	Cigar lighter.
15	25	Passenger door control module, transit relay connector.
16	5	Navigation screen.
17	15	Body processor module, exterior lights.
18	–	Not used.

(D) on location illustration, page 6-20.

Engine compartment fuse box – left-hand side

Fuse No	Ratings (amps)	Circuit
1	10	Transmission control module.
2	5	Alternator regulator.
3	5	Security sounder, headlamp levelling (HID and Halogen), centre console switchpack, HID ride height sensors front and rear, ignition +Ve to engine compartment fuse box relays 1 and 2.
4	5	Dynamic stability control module.
5	10	Ignition coils (via relay).
6	20	Right-hand dipped beam headlamp (HID). Right-hand main beam headlamp (Halogen).
7	30	Power wash pump.
8	20	Left-hand dipped beam headlamp (HID). Left-hand main beam headlamp (Halogen).
9	10	Security sounder.
10	–	Not used.
11	15	Horns.

Fuse No	Ratings (amps)	Circuit
12	–	Not used.
13	–	Not used.
14	–	Not used.
15	10	Air conditioning coolant pump.
16	30	Dynamic stability control valves.
17	15	Front fog lamps.
18	30	Dynamic stability control pump motor.
19	10	Right-hand main beam headlamp (HID). Right-hand dipped beam headlamp (Halogen).
20	–	Not used.
21	10	Left-hand main beam headlamp (HID). Left-hand dipped beam headlamp (Halogen).
22	5	Adaptive cruise control module.

(A) on location illustration, page 6-20.

6-26 Roadside emergency

Luggage compartment fuse box – electrical carrier

Fuse No	Ratings (amps)	Circuit
1	5	Coupe: Reversing lamps. Convertible: Reversing lamps, rear quarter windows raise/lower relays.
2	20	Adaptive damping control module.
3	5	Diagnostic connector (ignition).
4	5	Adaptive damping control module.
5	30	Fuse box ignition +Ve for relays, fuel pump driver module.
6	5	Right and left-hand stop lamps via security and locking module.
7	–	Not used.
8	5	High mounted stop lamp, engine control module brake signal input.
9	10	Antenna motor.
10	10	Security and locking control module.
11	10	Accessory sockets (Aux ignition).
12	– 20	Coupe: Not used. Convertible: Right-hand rear quarter window lift motor.

Fuse No	Ratings (amps)	Circuit
13	5	Reverse aid, navigation DVD unit, TV and VICS (Japan).
14	– 40	Coupe: Not used. Convertible: Raise and lower pump for convertible top.
15	10	Rear fog lamps.
16	5	Navigation, TV and VICS (Japan).
17	25	Heated rear screen.
18	30	Power amplifier.
19	5	Right-hand tail, left-hand and right-hand number plate lights.
20	– 20	Coupe: Not used. Convertible: Left-hand rear quarter window lift motor.
21	5	Left-hand tail, left-hand and right-hand side marker lights.
22	5	Alternator, battery sense input.

(E) on location illustration, page 6-20.

Fire extinguisher

Many countries make it compulsory to carry a fire extinguisher. Your Jaguar Dealer can supply and fit one.

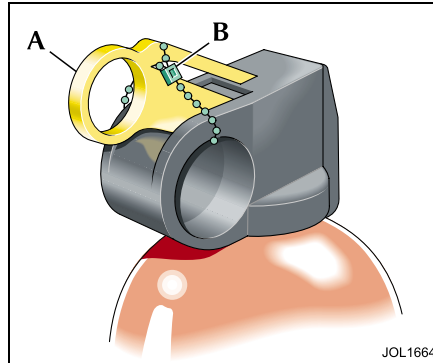
Mexican vehicles have a factory fitted fire extinguisher which contains 2.2 lbs (1 kg) of BC powder pressurised with nitrogen to a working pressure of 180 psi (12 bar) at 68°F (20°C).

This extinguisher can be used on liquid fires, electrical equipment fires and, if no explosion risk, gaseous fires.



WARNING:

Do not test the fire extinguisher prior to use. Partial discharge will render the extinguisher inoperative.



To operate the fire extinguisher:

1. Unclip and remove the extinguisher from the bracket.
2. Put your finger through the yellow safety wedge ring (A) and pull hard to remove the wedge. The operating lever will be exposed.
3. Hold the extinguisher upright and aim at the base of the fire.
4. Press the lever down firmly.

Release the lever to stop the flow of powder.

Maintenance

Every six months:

- Remove the extinguisher from its bracket and check that the nozzle is clear.
- Check that the safety wedge strap (B) is secure.

Check the pressure gauge on the base of the extinguisher. If the gauge is in the red area report it to your Jaguar Dealer immediately as the extinguisher may not work in an emergency.

