

General maintenance

Introduction

Owners are responsible for ensuring that the vehicle is regularly serviced at the correct mileage/time intervals as specified in the 'Maintenance Schedules'. The first part of this section deals with regular servicing.

The condition of the tyres is of the utmost importance. Advice about tyre wear and correct usage is given in this section. If in any doubt about the condition of your tyres, contact a Jaguar Dealer.

Regular servicing

Each vehicle is given a full 'Pre-Delivery Inspection' to ensure that all systems function correctly and the vehicle meets its specification.

Regular maintenance and servicing is the responsibility of the owner. Failure to implement maintenance at the recommended intervals could result in deterioration of vehicle performance and possible infringement of regulations.

Jaguar Dealers will be pleased to arrange periodic servicing in accordance with the maintenance schedules. In the USA and Canada refer to the 'Passport to Service' booklet; in Mexico refer to the 'Service Record and Warranty Book' and 'Maintenance Schedules' booklet.

Tyres

Tyres of the correct type and dimensions, with correct cold inflation pressures are an integral part of every vehicle's design. Regular maintenance of tyres contributes not only to safety, but to the designed function of the vehicle. Roadholding, steering and braking are especially vulnerable to incorrectly pressurised, badly fitted or worn tyres.

Tyres of the correct size and type but of different make have widely varying characteristics. It is therefore recommended that Jaguar approved tyres (see Section 8 – **Wheels and tyres**) are fitted to all wheels.

Note:

1. On certain models the rear wheel and tyre assemblies will be larger than the front. These larger assemblies must never be fitted to the front of the vehicle.
2. On certain models the tyres specified may be of a directional type. These tyres must be fitted so that when viewed from the side of the vehicle the tyre 'direction of rotation' arrow points in the vehicle direction, when positioned at the top of the tyre.

Tyre repair

It is recommended that damaged tyres are discarded and new tyres fitted. They must not be repaired in view of the high performance capability of the vehicle.

7-2 Maintenance

Precautions

- Ensure that the vehicle is securely supported before working underneath it. Chock a front wheel and apply the parkbrake.
- Whenever possible use a suitable wheel-free lift when working beneath the vehicle. If a jack is used to support the vehicle, use axle stands carefully placed at the jacking points to provide a rigid support. Only use jacking equipment at the designed lifting points.
- Ensure that adequate ventilation is provided when volatile degreasing agents are being used.
- Never use volatile cleaning fluids under a vehicle standing over a pit. Many such fluids give off vapours which are heavier than air and dangerous to inhale.
- Wear protective overalls, ensure loose clothing (ties, etc.) are removed or covered when working adjacent to moving components (fan belts, etc.).
- Do not leave opened containers of oil, fuel, etc., about the work area. Always refit caps/seals to partially used containers when storing them for later use.
- Do not leave tools, equipment, spilt oil, etc., around or on the work area.
- Place a fire extinguisher close to the vehicle and disconnect the negative battery terminal.
- Do not use an open flame to provide illumination, especially under the vehicle, or in the engine and luggage compartments. Do not smoke while working on the vehicle.
- Do not apply heat in an attempt to free nuts or fittings. This will damage protective coatings and there is a risk of damage to electronic equipment and brake and fuel lines from conducted heat.
- Inspect power leads of any mains electrical equipment for damage, and check that it is properly earthed.

General precautions against damage

- When working in the engine compartment protect the exterior paintwork by using suitable covers over the wings and scuttle.
- To prevent soiling the interior, carry out jobs requiring access to the passenger or luggage compartments first. If a job involves access to the interior in the course of other work, prevent the transfer of oil and grease to the interior by using seat and carpet covers and wearing clean overalls and gloves. If protective seat covers have been used they must be removed before the vehicle is driven on the public highway to ensure that, if needed, the side airbags can properly deploy.
- Always use a recommended service tool, where specified.
- Avoid spilling hydraulic fluid or battery acid on paintwork. Wash off with water immediately if this occurs.

Battery/ignition isolator switches

Non-approved battery isolator switches, which disconnect the power supply to all electrical circuits, are not recommended.

Used engine oil



WARNING:
Prolonged and repeated contact may cause serious skin disorders, including dermatitis and cancer.

Always use a hand cream to protect the skin from oil contamination. Avoid contact with the skin as far as possible and wash thoroughly after any contact. Keep oils out of reach of children.

PROTECT THE ENVIRONMENT: It is illegal to pollute drains, watercourses and soil. Use authorised waste collection facilities, including civic amenity sites and garages providing facilities for the disposal of used oil, oil filters and batteries. If in doubt, contact your Local Authority for advice on disposal.

Engine and throttle settings

Do not attempt to make adjustments to the engine or throttle settings. Many vehicle systems are controlled by complex electronic devices and require specialist knowledge. Such work should be entrusted to a Jaguar Dealer.

Hydraulic fluid

The brake hydraulic fluid in the master cylinder and brake operating system uses non-mineral polyglycol based brake fluid with a minimum standard of JAGUAR SUPER DOT 4. ONLY FLUID OF THIS TYPE AND STANDARD MAY BE USED.

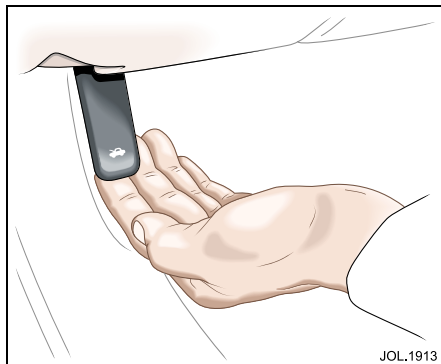


WARNING:
Contamination of the brake system fluid by as little as 1 per cent will cause rapid deterioration of the system seals. Ensure that the brake fluid reservoir cap is securely fitted.

Towing

The XK range has not been designed as a towing vehicle and Jaguar Cars Limited does not manufacture a tow bar for this vehicle.

7-4 Maintenance



Hood release control

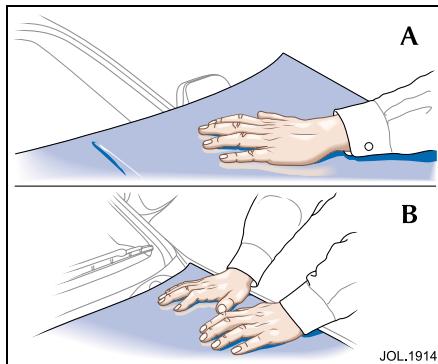


WARNING:

Take care to keep away from rotating components if the engine is running when you open the hood.

The hood lock release control is below the fascia on the drivers's side.

To open: Release the hood lock by pulling the lever. Reach across to the centre of the hood and lift the rear edge. The gas filled struts will assist raising the hood, and retain it in the fully open position.



WARNING:

Before closing the hood ensure that no one is obstructing the closing area and that hands and clothes are clear. Remove tools, cleaning cloths, etc., from the engine compartment.

Hood latching: Close the hood to within a distance of 10 to 12 inches (250 to 300 mm) of the fully closed position.

Place the left hand on the hood as shown at (A). Then pressing downwards slam the hood shut. This action should engage both the right-hand and left-hand latches. Should one latch fail to engage, place both hands as shown at (B) above the unlatched side and press down firmly on the hood until it engages.

Regular checks

In the interests of safety and reliability, it is advisable to carry out the following checks at the recommended intervals, and always before starting on a long journey.

Daily

Check that there is sufficient fuel for the journey intended, particularly at night and before entering motorways.

Weekly

Tyres – Check the tyres, including the spare, for condition and pressure. Tyre pressures are referred to in Section 8 of this handbook.

Lights – Check that all exterior lights and direction indicators function correctly and that the lenses are clean.

Engine oil – With the vehicle standing on level ground, check the oil level and top up if necessary with oil of the correct grade.

Engine coolant – With the engine cold, check the level of the coolant in the coolant reservoir header tank. Any loss of fluid must be checked by a Jaguar Dealer.

Brake/clutch fluid – Check the level of the fluid in the brake fluid reservoir. Top up if necessary with new, unused Jaguar approved brake fluid.

The reservoir is initially nearly full, but the level will drop as the brake pads wear. If the level appears unusually low, location of the fluid leakage must be checked by a Jaguar Dealer.

Power steering fluid – With the engine cold check the level of the fluid in the power steering fluid reservoir. Top up if necessary with fluid of the correct specification. Any loss of fluid should be checked by a Jaguar Dealer.

Monthly

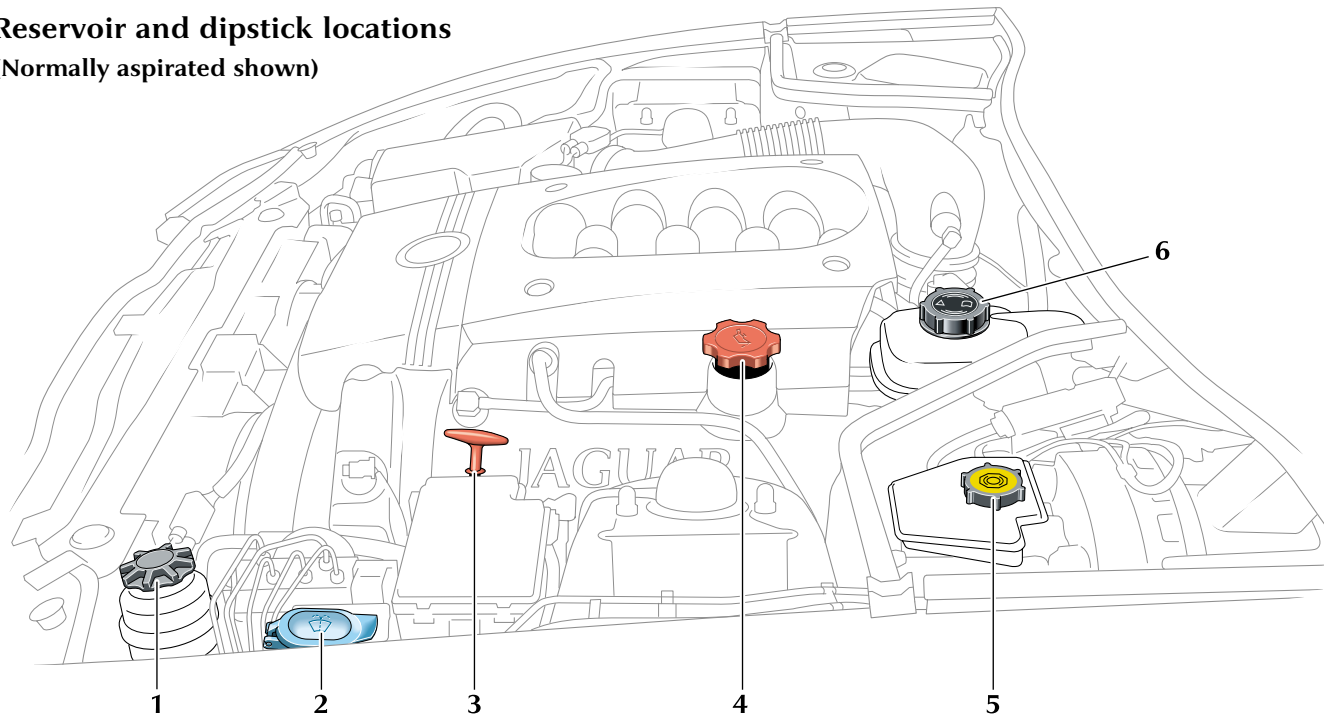
Windscreen washer fluid – Top up with recommended windscreen washer fluid and clean soft water. Check the operation of the washer. Use Jaguar Windscreen Washer Fluid to keep the glass clean and also to prevent the fluid from freezing during cold weather.

Wiper blades – Check the quality of the wipe. If smearing or juddering is evident, clean the windscreen and renew the wiper blades.

7-6 Maintenance

Reservoir and dipstick locations

(Normally aspirated shown)



1. Power steering reservoir
2. Windscreen/headlight powerwash reservoir
3. Engine oil dipstick

4. Engine oil filler
5. Brake fluid reservoir
6. Coolant filler pressure cap

Checking and top up

Check engine oil level

Check the oil level regularly with the vehicle on flat, level ground.

Refer to page 7-6 for dipstick and oil filler locations.

It is preferable to check the oil level after the vehicle has been standing, that is, with the engine completely cold.

If the engine has been started do not check the oil level until the engine has reached normal operating temperature.

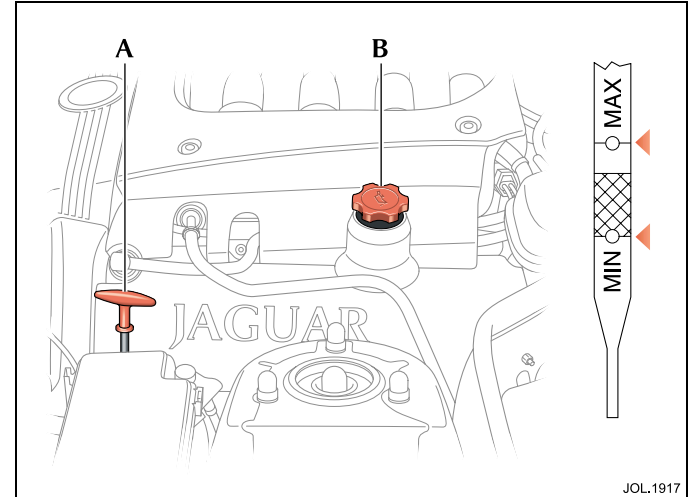
Stop the engine and wait for a minimum of two minutes to allow the oil to drain back into the sump.

Remove the dipstick (A) and wipe clean with a non-fluffy cloth. Replace fully, then withdraw the dipstick.

The oil level is correct when it is at the top of the crosshatched section.

The difference in oil quantity between the lower edge of the crosshatched section (MIN) and the top of the crosshatched section is 1 US quart (1 litre).

The oil must not be allowed to exceed the MAX level.



To top up, remove the oil filler cap (B) and add oil to the correct specification as detailed on page 7-12.

Caution: Do not use oil additives of any type. Use only specified lubricants.

Refit the filler cap and hand tighten securely.

The supercharger (where fitted) is oil filled for life and does not require any checks to be made by the driver.

7-8 Maintenance

Checking coolant level

The coolant level must only be checked when the engine is COLD.

See page 7-6 for coolant header tank location and page 7-11 for the coolant specification.

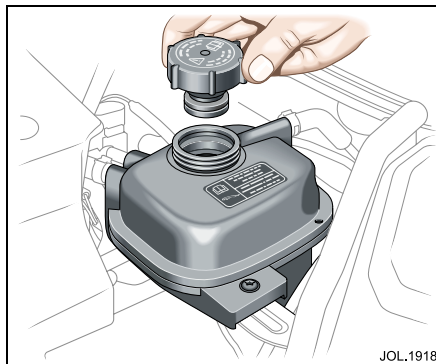


WARNING:

Do not remove the coolant expansion tank filler/pressure cap while the engine is hot. If the cap must be removed, protect the hands against escaping steam and slowly turn the cap anticlockwise until the steam pressure starts to escape. Leave the cap in this position until all the pressure has escaped, and then remove the cap completely.

The coolant level should be up to the bottom of the filler neck of the header tank. If persistent coolant loss is noticed have a Jaguar Dealer investigate the cause immediately.

Refit the filler cap and hand tighten securely.



Topping up

Caution: Antifreeze will damage paintwork. Avoid spillage.

With the engine cold, top up the header tank until the coolant is level with the bottom of the filler neck.

Use the correct concentration of Jaguar Antifreeze/Coolant/Corrosion Inhibitor as detailed on page 7-11.

Check windscreen washer/powerwash reservoir

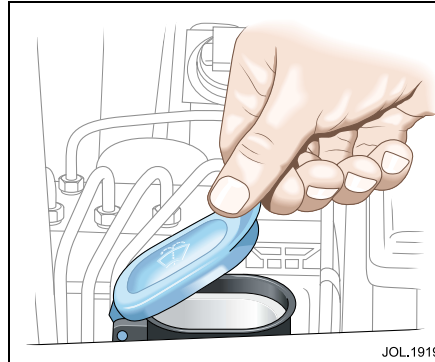
See page 7-6 for windscreen washer reservoir location.

The washer reservoir contains the fluid for the windscreen washers and the headlamp powerwash system (where fitted).

Fill to just below the neck with Jaguar Windscreen Washer Fluid diluted with clean, preferably soft water as specified in the maker's instructions on the bottle.

Do not overfill.

Note: Using a non-approved fluid may adversely affect the rubber of the windscreen wiper blades, resulting in ineffectual and noisy wiping.



Cold weather precautions

To prevent damage to the pump under freezing conditions, use recommended Jaguar Windscreen Washer Fluid.



WARNING:

Windscreen washer fluid is toxic and in concentrated form is flammable. Be sure to observe all warnings indicated on the washer solution container.

Under no circumstances must cooling system antifreeze be used, since this will damage the paintwork.

Note: State or local regulations may restrict the use of volatile organic compounds (VOCs), which are commonly used as anti-freeze agents in washer fluid. A washer fluid with limited VOC content should be used only if it provides adequate freeze resistance for all regions and climates in which the vehicle will be operated.



WARNING:

If you operate your vehicle in temperatures below 40°F (-40°C), use washer fluid with anti-freeze protection. In cold weather, failure to use washer fluid with anti-freeze protection could result in impaired windscreen vision and increase the risk of a vehicle crash.

7-10 Maintenance

Check/top up brake fluid reservoir



WARNING:

The brake fluid level will drop as the brake pads wear. If the level is very low report the loss of fluid to the nearest Jaguar Dealer. Do not drive the vehicle until the cause is rectified.

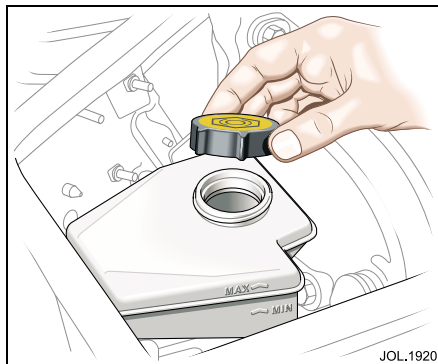
Caution:

1. While handling brake fluid, take extreme care; brake fluid must not contact the vehicle paintwork.
2. Always use fresh, clean fluid from a new container. Never introduce used brake fluid into the system.

See page 7-6 for brake fluid reservoir location.

The fluid is visible through the translucent casing of the reservoir and must be maintained at the 'MAX' mark.

If necessary, top up as follows:

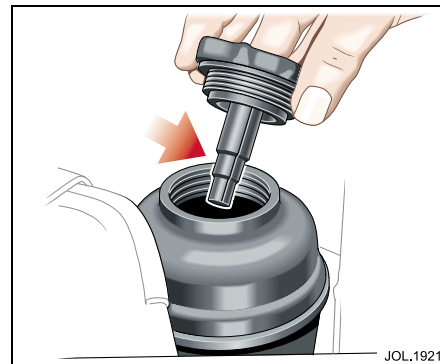


Before removing the cap, clean the reservoir and cap thoroughly with a lint free cloth to ensure that no foreign matter enters the reservoir.

Unscrew the filler cap and top up to the 'MAX' level using new Jaguar brake fluid, specification JAGUAR ITT SUPER DOT 4. This is a non-mineral polyglycol based brake fluid.

Refit the filler cap securely.

Should any brake fluid be spilt, refit the cap on the reservoir before rinsing it away, to avoid contamination.



Check/top up power steering fluid reservoir

Caution: It is imperative that the power steering system does not become contaminated in any way. Always dispense fluid from a fresh sealed container and clean the area around the reservoir neck both before and after topping up. Never return drained fluid to the system.

See page 7-6 for power steering fluid reservoir location.

Check the fluid level when the engine is 'COLD' and the vehicle is on a flat, level surface.

Wipe clean and remove the filler cap from the reservoir; take great care to prevent any foreign matter from entering. Check that the fluid level is between the marks on the dipstick.

If necessary, top up with DEXRON III fluid, DO NOT OVERFILL.

Should the level be very low, report the loss of fluid to the nearest Jaguar Dealer.

Cooling system

The cooling system should be filled or topped up with a mixture of 50% plain water and 50% Jaguar Antifreeze, Coolant and Corrosion Inhibitor conforming to specification: WSS M97B44-D, coloured orange, Extended Life Coolant.

This antifreeze mixture gives frost protection for temperatures down to -40°F (-40°C).

Caution: Do not mix with anti-freeze of a different specification as this would damage the cooling system.

Engine antifreeze

Antifreeze, when used at the correct concentration, not only protects the engine from frost damage in winter, it also provides all year round protection against internal corrosion.

Use only antifreeze to specification, WSS M97B44-D, coloured orange, Extended Life Coolant. inferior quality antifreeze may be ineffective in maintaining adequate frost and corrosion protection to the cooling system.

The coolant solution may remain in the cooling system for five years or 150,000 miles (240,000 kilometres), after which the cooling system should be drained, flushed and refilled.



WARNING:

Do not allow antifreeze to make contact with skin or eyes. If this should happen, rinse the affected area immediately with plenty of water.

Engine block heater

If the vehicle is to be started at temperatures of -22°F (-30°C) and lower, it is recommended that an engine block heater is fitted and used. Failure to do so may result in damage to the drive belt.

For further information consult your Jaguar Dealer.

Caution: The fitting of an engine block heater does not eliminate (lessen) the need for antifreeze under freezing conditions.

7-12 Maintenance

Recommended engine oil

When the oil level is at the lower dipstick mark, add 1 US quart (1 litre) of oil:

Oil specification – API SJ/EC and ILSAC GF-3

When topping up between oil changes, make sure that you use oil that has the correct quality level (API service) and viscosity grade. Your vehicle's warranty may be invalidated if damage is caused by use of improper engine oil.

Synthetic oil meeting the above specification may be used.

For maximum fuel economy, 5W-30 oil is recommended.

SAE Viscosity Rating

For climates ranging from -22°F (-30°C) and +122°F (+50°C), the following oil viscosities may be used:

0W-30

5W-30 (preferred)

0W-40

5W-40

Note: It is recommended that the oil level is topped up using oil of the same viscosity. If you are unsure which oil viscosity is used in your car, your Jaguar Dealer will be able to advise.

If you are operating this vehicle in climates outside the above temperature range, contact your Jaguar Dealer for advice.

Caution: Do not use oil additives of any type. Use only specified lubricants.

Capacities

	US Quarts	Litres
Engine oil: Service oil change with new oil filter (normally aspirated and supercharged)	8.2	7.8
The rear axle (final drive unit), automatic transmission unit and supercharger (where fitted) are oil filled for life and will not normally require to be topped up.		
Cooling system, including reservoir and climate control:		
– Initial fill – 4.2 litre normally aspirated.	10.0	9.5
– Initial fill – 4.2 litre supercharged.	12.2	11.5
Windscreen washer reservoir.	7.4	7.0

7-14 Maintenance

Battery

A low maintenance battery specifically designed for use with this vehicle is fitted below the luggage compartment floor panel.



WARNING:

- 1. The cell plugs and vent pipe must be in place at all times when the battery is in the vehicle. Failure to fit, or incorrect fitting of these items is potentially hazardous.**
- 2. To avoid injury do not use an open flame or cause an electric spark when checking the battery. Hydrogen gas generated by the battery is flammable and may explode.**
- 3. Do not connect any 12 volt equipment (for example a 12 volt lead lamp) directly to the battery terminals. Use the cigar lighter sockets to temporarily connect Jaguar approved accessories.**

- 4. Do not let battery acid electrolyte come into contact with skin or eyes. If you get any in your eyes or on your skin, immediately rinse with cold water and consult a doctor.**

Caution:

- 1. Switch off the ignition before disconnecting battery terminals. Always disconnect the earth terminal first and reconnect last.**
- 2. Do not let battery acid come into contact with painted surfaces or fabric.**

The exterior of the battery should be occasionally wiped clean to remove any dirt or grease.

If a new battery is to be fitted, it must be the same type as the original.

The use of unapproved batteries is not recommended and could invalidate the vehicle warranty.

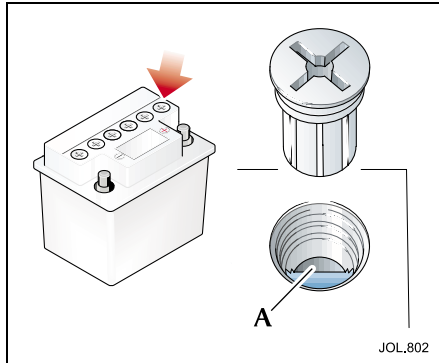
Note: The service life of the battery is dependent on its condition of charge. It must always be sufficiently charged for the battery to last an optimum length of time.

We recommend that the battery charge is checked frequently if the vehicle is used mostly for short distance trips, or if it is not used for long periods of time.

Alternator

To prevent damage to the alternator, do not run the engine while the battery or any of the charging circuit cables are disconnected.

The alternator has polarity-sensitive components that may be irreparably damaged if subjected to incorrect polarity. Ensure that the battery earth lead is always connected to the battery negative terminal.



Check/top up battery electrolyte

In normal climates this must be carried out at least once a year. In hot weather/ climates the electrolyte level must be checked at least every three months.

Fold the luggage compartment floor panel forwards.

Unscrew the six cell plugs. Check that the electrolyte is level with the plastic level indicator (A). If necessary, top up with distilled water but do not overfill.

If illumination is required, use a hand-held flashlight to inspect the electrolyte level.

Refit the six cell plugs and refit the battery cover.

Battery charging



WARNING:

Batteries produce combustible gas (hydrogen) when being charged. The battery must be removed from the vehicle before charging commences.

To disconnect the battery, see **Battery lead disconnection** on page 7-16.

When charging the battery ensure that the charge voltage is the same as the nominal voltage of the battery.

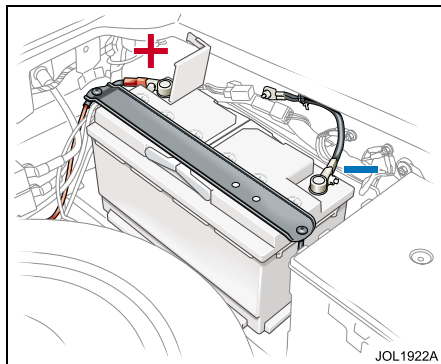
Switch off the charger before connecting or disconnecting terminal connections to avoid sparks and short circuits.

Ensure that the charger positive (+) lead is connected to the positive (+) terminal of the battery and the negative (-) lead is connected to the negative (-) terminal of the battery.

Do not remove or loosen any of the cell plugs when charging the battery.

Check and, if necessary, top up the electrolyte level when the battery is fully charged.

7-16 Maintenance



Battery lead disconnection



WARNING:

California Proposition 65:
Battery posts, terminals and related accessories, contain lead and lead compounds. Wash hands after handling.

Caution:

1. Under no circumstances should a battery be disconnected whilst the ignition circuit is live, as permanent damage to the instrument cluster may occur.
2. Disconnect the negative lead (earth terminal) first.

Fold the luggage compartment floor panel forwards.

Slacken the negative lead pinch bolt and disconnect the negative (-) battery lead. Slacken the positive lead pinch bolt and disconnect the positive (+) battery lead.

Clean the battery posts and coat the post bases with petroleum jelly.

Battery lead connection

Note: Reconnecting the battery arms the security system. Opening any protected entry will sound the alarm. Make sure that a key or key transmitter is available.

Caution: Do not overtighten the pinch bolts.

Connect the positive (+) lead, tighten the pinch bolt and clip the positive terminal cover on the battery. Connect the negative (-) lead and tighten the pinch bolt.

After the battery has been reconnected and the ignition switch is turned to position 'II', the message centre display, if fitted, will initially show an erroneous reading i.e. -----. This will remain until after the bulb check sequence, when the correct recorded mileage will be displayed. This is a normal function of the instrument cluster.

After battery reconnection

After reconnecting the battery:

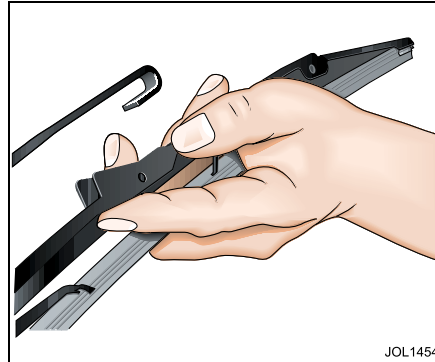
- Reset the door windows; see Section 4.
- The trip computer will lose all recorded trip data and all trip functions will be reset to zero. The vehicle total odometer reading is retained.
- The radio will not operate until the correct security code has been re-entered. Refer to the Audio System Handbook.
- If the battery is disconnected for more than 72 hours the radio preset channels will need to be reset.
- Reset the clock to the correct time.

The engine electronic control system automatically adapts to certain characteristics of the vehicle. When the battery is disconnected, these adaptations are lost. On reconnection, therefore, some slightly abnormal drive symptoms may occur and the vehicle may need to be driven 10 miles (16 kilometres) or more while the control system re-adapts.

Windscreen wipers

Use Jaguar Screen Clean Paste to remove contamination from the windscreen to ensure effective wiping or if smearing or juddering becomes evident. A more aggressive cleaning agent may be required to remove stubborn contamination. Contact a Jaguar Dealer for advice.

To ensure that the windscreen remains smear free, the washer system should be operated whenever the wiper is used, even when it is raining.



Windscreen wiper blades – inspect and clean

Lift the wiper blades clear of the windscreen and wipe the blades with a clean, soft cloth moistened with water to which a mild liquid detergent has been added.

Inspect the wiper blades, and if there any signs of wear or damage; renew the blades.

Renew the wiper blades before and after each winter, or more often if required.

Wiper blade renewal

Move the wiper arm away from the windscreen, squeeze the retaining clip and withdraw the wiper blade from the arm. After fitting the new blade, check that it is held firmly in position. Reposition the wiper arm and blade onto the screen.

Windscreen washers

The windscreen washer tubes and nozzles are mounted on the wiper arms to apply the washer fluid directly to the windscreen.

Powerwash system

Note: The headlamp washer jets are factory set. Should they require further adjustment consult your Jaguar Dealer.

7-18 Maintenance

Tyres

Tyres of the correct type, manufacturer and dimensions, with correct cold inflation pressures are an integral part of every vehicle's design. Regular maintenance of tyres contributes not only to safety, but to the designed function of the vehicle. Road-holding, steering and braking are especially vulnerable to incorrectly pressurised, badly fitted or worn tyres.

Tyres of the correct size and type, but of different make have widely varying characteristics. It is therefore recommended that Jaguar approved tyres are fitted to all wheels.

A label stating the recommended tyre pressures is fixed to the underside of the centre console storage compartment lid.

Always ensure that the wheel nuts are fully seated before finally tightening the nuts in alternate sequence.

Tyre renewal

When renewing tyres, it is preferable to fit a complete vehicle set. If either front or rear tyres only need to be renewed, new tyres must be fitted, as axle sets, to replace worn ones.

After new tyres have been fitted the wheels need to be dynamically balanced.

The radial ply tyres specified are designed to meet the high-speed performance capability of this vehicle (see Section 8).

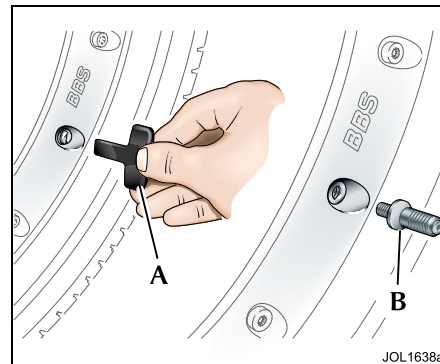
Do not fit tyres with a different tread pattern, size or speed rating.

Tyre pressures

The tyre pressures recommended provide optimum ride and handling characteristics for all normal operating conditions. The pressures should be checked, and correctly set each week with the tyres cold.

Tyre temperatures and pressures increase when running. Deflating a warm tyre to the recommended pressure will result in under inflation which may be dangerous.

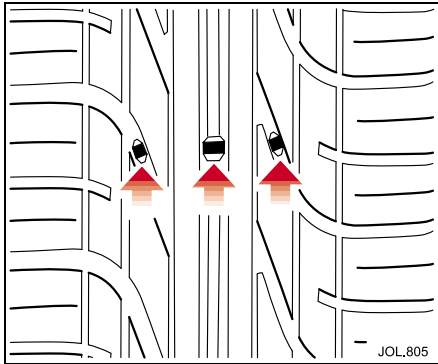
A natural pressure loss occurs with time. If this exceeds 2 lbf/in² (14 kPa, 0.14 bar, 0.14 kg/cm²) per week, the cause should be investigated and rectified.



‘R’ performance wheels – These wheels have a slotted screw valve cover on the wheel face. A pouch containing a ‘T’-shaped screwdriver and a valve adaptor, for use with these wheels, is stowed in the glove compartment.

To access the valve, remove the slotted screw valve cover using the screwdriver (A). Screw in the adapter (B) and hand-tighten. After checking the pressure, remove the adapter and refit the valve cover.

Note: It is an offence in certain countries to drive a vehicle with tyres that are not inflated in accordance with the vehicle's proper use.



Wear

All tyres fitted as original equipment include tread wear indicators (TWI) in their tread pattern. When the tread has worn to a remaining depth of 1.6 mm the indicators appear at the surface as bars which connect the tread pattern across the full width of the tyre.

It is illegal, in certain countries, to continue to use tyres after the tread has worn to less than 1.6 mm over three quarters of the width and the entire circumference of the tyre.

It should be noted that the properties of many tyres alter progressively with wear. In particular the 'wet grip' and aquaplaning resistance is gradually but substantially reduced. Extra care and speed restriction should therefore be exercised on wet roads as the effective tread depth diminishes.

Incorrect wheel alignment will accelerate tyre wear. Fins on the inner or outer edges of the tread pattern are caused by excessive toe-in or toe-out respectively. As fins may also be caused by high cornering speeds or road camber, it is advantageous to have the cause detected by having the wheel alignment checked.

Tyre repair

It is recommended that damaged tyres are discarded and new tyres fitted. They must not be repaired in view of the high performance capability of the vehicle.

Damage

Excessive local distortion can cause the casing of a tyre to fracture and may lead to premature failure. Tyres should be examined especially for cracked walls, exposed cords, etc. Flints and other sharp objects must be removed from the tyre tread; if left in they may work through the cover. Clean off any oil or grease contamination by using a suitable cleaner.

Caution: Do not use paraffin (kerosene), because this has a detrimental effect on rubber.

Tyre use after vehicle storage

After a long period of a vehicle standing, tyres may become locally distorted with a flat area. This will cause an uneven ride for a few miles until the tyres have warmed up and the 'flat' rounds off.

However, to reduce the effects of flat-spots, the tyres of a stored vehicle may be inflated to pressures not exceeding 60 lb/in² (420 kPa, 4.2 bar, 4.3 kg/cm²).

7-20 Maintenance

United States Department of Transportation/Uniform Tyre Quality Grades

The following information relates to the tyre grading system developed by the National Highway Traffic Safety Administration which will grade tyres by tread wear, traction and temperature performance.

Tread wear

The tread wear grade is a comparative rating based on the wear rate of the tyre when tested under controlled conditions on a specified government test course. For example, a tyre graded 150 would wear one and a half (1.5) times as well on the government course as a tyre graded 100.

The relative performance of tyres depends upon the actual conditions of their use, however, and may depart significantly from the norm due to variations in driving habits, service practices and differences in road characteristics and climate.

Traction – A, B, C

The traction grades, from the highest to the lowest are 'A', 'B' and 'C', and they represent the tyre's ability to stop on wet pavements as measured under controlled conditions on specified government test surfaces of asphalt and concrete. A tyre marked 'C' may have poor traction performance.



WARNING:
The traction grade assigned to this tyre is based on braking (straight ahead) traction tests and does not include cornering (turning) traction.

Temperature – A, B, C

The temperature grades 'A' (the highest), 'B' and 'C' representing the tyre's resistance to the generation of heat and its ability to dissipate heat when tested under controlled conditions on a specified indoor laboratory test wheel. Sustained high temperature can cause the material of the tyre to degenerate and reduce tyre life, and excessive temperature can lead to sudden tyre failure.

The grade 'C' corresponds to a level of performance which all passenger car tyres must meet under the Federal Motor Vehicle Safety Standard No. 109.

Grades 'B' and 'A' represent higher levels of performance on the laboratory test wheel than the minimum required by law.



WARNING:
The temperature grade for this tyre is established for a tyre that is properly inflated and not over loaded. Excessive speed, under-inflation or excessive loading, either separately or in combination, can cause heat build-up and possible tyre failure.

Winter (snow) tyres

The tyres fitted as original equipment are designed with a rubber compound, tread pattern and width specially suited for high speeds in normal road conditions, but they are less suitable during extremes of low temperatures, snow and ice.

The use of winter tyres will considerably improve the vehicle's handling during these conditions.

It is recommended that only Jaguar approved winter tyres are used, as follows:

Pirelli Snowsport 210 245/50R17

Pirelli Snowsport 210 245/45R18

Pirelli Snowsport 240 245/45R18

Caution: Tyre directional indicators must be rotating in a clockwise direction when viewed from the right-hand side of the vehicle, and anti-clockwise when viewed from the left-hand side of the vehicle.

Do not exceed 130 mph (210 km/h) when using H-rated or 150 mph (240 km/h) when using V-rated winter tyres.

Winter tyres must be used in vehicle sets, that is, fitted on all four wheels.

If non-Jaguar approved winter tyres are fitted, refer to the tyre pressure information label.

Vehicles fitted with 'R' performance brakes: Special 18 inch winter wheels/tyres are available as an accessory for vehicles equipped with the 'R' performance brakes (the standard winter wheels will not fit). Tyre pressures for these winter wheels are as specified for 18 inch wheels, see information label.

If the vehicle is also fitted with the 'R' performance handling kit (modified suspension), the winter tyres must be inflated to the pressures specified for 20 inch wheels.

There is no 20 inch Jaguar approved winter tyre available.

Snow chains

Snow chains, of the recommended type, may only be fitted to rear wheels.

Caution: Snow chains must not be fitted to wheels of 19 inch diameter or above.

Contact your Jaguar Dealer for details and availability of approved snow chains.

The maximum speed when using snow chains is 30 mph (48 km/h).

Remove the snow chains immediately the roads are clear of snow.

Ensure the fitting instructions supplied with the snow chains are kept in a safe place, for example, with this literature pack.

Note: Traction control or (if fitted) Dynamic Stability Control, **MUST** be switched **OFF** when using snow chains.

7-22 Maintenance

Temporary-use spare wheel (where fitted)

Steel road wheel size 3.5 x 18

Alloy road wheel size 4 x 18

Tyre type/size Pirelli 135/80 R 18



WARNING:

Failure to comply with the following can be dangerous. When a temporary-use spare wheel is fitted, switch off traction control, drive with caution and replace with the specified wheel and tyre assembly as soon as possible. Do not fit more than one temporary-use spare at one time. Temporary-use spare, maximum speed is 50 mph (80 km/h).

For information about temporary-use spare wheel, see Section 6.

Vehicle care

Valet kit

A valet kit containing a selection of Car Care products is available from the Jaguar accessory range.

Interior care

Brush and clean the interior regularly. Use a vacuum cleaner where possible to remove all dust from the interior and trim.

Carpets

Marks or stains can be removed by gentle scrubbing with a weak solution of soap and warm water.

For more stubborn stains a commercially available carpet cleaner should be used. See your Jaguar Dealer for advice.

Headlining

Remove dust in the headlining with a vacuum cleaner. To remove stains, dab gently without pressing, using a fluff-free white cloth, moistened with Jaguar Upholstery Cleaner.

Do not use methylated spirit or solvents as this may cause damage or discoloration to the headlining.

Leather upholstery

Dust and dirt can penetrate the pores and creases of leather, causing surface wear and brittleness. To prevent ingrained dirt, inspect the seat upholstery regularly and clean every one to two months as follows:

- Wipe the seat surfaces with a clean, damp, non-coloured cloth, changing frequently to a clean area of cloth. Avoid over-wetting.
- If this is not sufficient, use a cloth which has been dampened with warm soapy water and then wrung out; avoid over-wetting. Use only mild non-caustic soap.
- Use Jaguar Leather Cleaner for heavily soiled areas.
- Dry off and rub with a clean soft cloth, changing surfaces regularly.

When staining (e.g. from clothing) or spillages occur, clean the affected area immediately as described above.

Note: Do not use solvents such as petrol (gasoline), white spirit or alcohol. Do not use detergents, furniture polish or household cleaners.

Although such treatments may give, initially, an impressive appearance, their use will lead to rapid damage or deterioration of the leather, and will not be covered by the Manufacturer's Warranty. Unless spillages such as tea, coffee or ink are washed away immediately, permanent staining may have to be accepted.

If a valeting service is used, ensure that the specialist firm concerned are aware of, and follow these instructions precisely.

Caution:

1. **Never use soap, ammonia, bleach or other cleaners intended for use on hard surfaces.**
2. **Do not use upholstery cleaner on electrical equipment such as fascia switches.**
3. **When cleaning around electrical equipment such as switches, ensure that fluids do not leak into any gaps around the components or between panels or trim.**

Removing stains

Most stains on woollen fabric can be removed if treatment is carried out immediately, before the stain has a chance to 'dry-in'.

Keep the necessary cleaning materials in a convenient place.

Most stains can be treated with one of three cleaning fluids: Jaguar Upholstery Cleaner, dry cleaning fluid or clean water.

Mop up excess liquid with absorbent tissue (preferably white) or absorbent cloth; scoop up dry solids. Work inwards from the edge of the stain to prevent spreading. Use small amounts of cleaning liquid, blotting between applications.

Work slowly and thoroughly using light pressure. If the stain cannot be removed, contact a reputable dry cleaners.



WARNING:
Dry cleaning fluids may be toxic or flammable. Take adequate precautions when handling these products.

Exterior care

Note: All the cleaning materials mentioned in this section are available from the Jaguar Accessory Range.

Washing

For best results, do not wash the vehicle under strong sunlight. Always allow the vehicle to cool down before washing.

Do not use a dry cloth to wipe dirty paintwork. Dust and gritty substances are abrasive and will scratch the paintwork. Remove dirt using a cellulose sponge and plenty of warm (never hot) water. Rinse off with clean water and dry using a clean, damp chamois leather.

Do not use household soaps or detergents. The use of Jaguar Vehicle Shampoo is recommended.

7-24 Maintenance

Do not direct hoses at full force around door and luggage compartment seals. Using high pressure water jets on the paintwork is not recommended.

Do not allow bird droppings or tree sap to harden. Remove from paintwork immediately with a lukewarm soap and water solution.

In winter, when salt is used on the roads, wash the vehicle frequently, and immediately after encountering such conditions. Clean undersides and wheel arches using a high pressure jet.

Automatic car wash

Caution: Convertible models: Do not use an automatic car wash that has rotating brushes. The action of the brushes may damage the exterior fabric of the convertible top.

Note: Regular use of automatic car washes tends to dull the lustre of the paintwork.

Before entering the car wash it is essential to:

- Switch off the radio to retract the aerial.
- Remove wing mounted telephone antennas.

- Fold down screen mounted antennas.
- Fold in door mounted rear view mirrors.
- Ensure the windscreen wipers are not set to AUTO.

After leaving the car wash, switch on the windscreen wiper immediately to remove water and prevent a build up of wax. Jaguar Screen Clean Paste can be used to clean any residual wax from the glass.

Removing grease or tar

Remove grease or tar with Jaguar Tar Remover or methylated spirit (alcohol). White spirit is also effective, but must not be applied to rubber, particularly the windscreen wiper blade.

Glass surfaces

To avoid scratching glass surfaces, do not clean dirty glass with dry paper or cloth. Use clean, warm water and a chamois leather which is reserved for glass only.

The following products will ensure glass surfaces and windscreen wipers are kept in good condition:

Jaguar Screen Clean Paste – Apply to the exterior of the windscreen only to ensure effective operation of the windscreen wiper.

Jaguar Glass Cleaner – Interior and exterior of all other glass surfaces.

Jaguar Screen Wash – Washer reservoir additive.

Jaguar Winter Care Kit – For use in adverse weather conditions.

Note:

1. Renew the wiper blades when worn to prevent scratching. Clean the rubber wiper blades regularly with a mild detergent solution.
2. It is advisable to clean the windscreen with Jaguar Screen Clean Paste at regular intervals.

Cleaning the rear screen

To avoid damaging the heating and radio elements when cleaning the inside of the rear screen use only a soft damp cloth or chamois leather. Do not use solvents or sharp objects to clean the glass.

Polishing paintwork and chromium plating

For maximum protection against road dust, salts, industrial fall-out etc., it is recommended that the vehicle is polished regularly using Jaguar Polish, Chrome Polish and a Polishing Cloth.

Paint chips

Scratches and chips should be touched in before weathering action begins. Inspect the paintwork immediately after the vehicle has been washed.

Underhood cleaning

Underhood cleaning using high pressure hoses or steam cleaners should be done by a Jaguar Dealer. Indiscriminate use of cleaning equipment could damage or contaminate the electronic control modules and fuse boxes.

Care of alloy road wheels

The alloy road wheels are covered with a protective anti-corrosion coating. To prevent corrosion it is essential that this coating is not damaged.

When removing or fitting tyres always advise the tyre fitter to treat the alloy wheels with great care and to only use equipment with spigot or stud hole clamping. The equipment must not have any moving parts which contact the wheel, and tyre levers must not be used.

Wash the wheels with soap and water at two week intervals to avoid an accumulation of particles which could become embedded in the wheel surface. In salty conditions the wheels should be cleaned weekly.

In compliance with German Road Traffic Law the size of the wheel rims is stamped or cast on all wheels.

Electrical accessories



WARNING:

Alterations to the electrical system, including the fitting of accessories not designed for this Jaguar, will cause damage to the electrical circuits and systems. In some circumstances this could result in a malfunction or fire. All accessory work should be entrusted to a Jaguar Dealer.

The cigar lighter sockets can be used for plug-in accessories which are only temporarily connected to the vehicle (for example, a car vacuum cleaner).

Caution:

1. Under no circumstances must the power supply be obtained directly from either battery terminal.

2. The use of non-approved accessories can reduce the battery capacity and charge period to an unacceptable level, therefore, Jaguar cannot accept any liability for the fitment of any such item.

Earth points

If an accessory needs to be connected to an earth point, consult a Jaguar Dealer.

Caution: Under no circumstances must holes be drilled in the bodywork to accept earth terminals.

