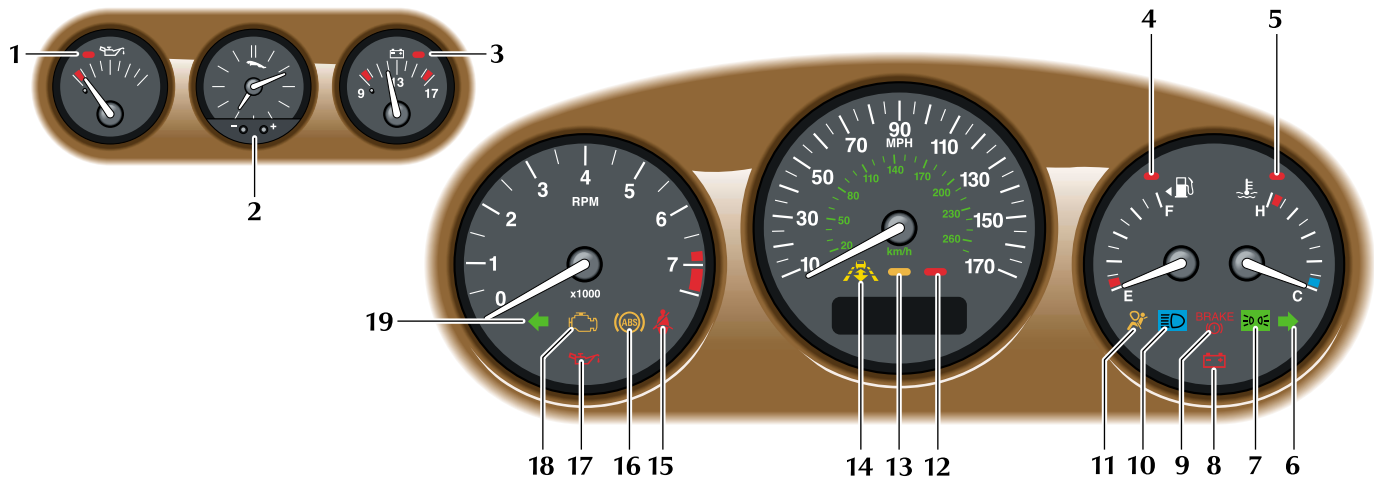


Controls and Instruments

1. Exterior light switch.
2. Tachometer.
3. Speedometer.
4. Message centre.
5. Fuel level and engine coolant temperature.
6. Navigation screen (where fitted, see Navigation Handbook).
7. Engine oil pressure (without navigation screen).
8. Clock (without navigation screen).
9. Battery condition (without navigation screen).
10. Rear fog lamp switch.
11. Passenger seat heater switch.
12. Hazard warning lamp switch.
13. Front fog lamp switch.
14. 'Sport' mode switch.
15. Roof and rear quarter window switch.
16. Audio control panel (see Audio System Handbook).
17. Driver's seat heater switch.
18. Dynamic stability control switch.
19. Air conditioning control panel.
20. Trip computer switches.
21. Wiper/washer switches.
22. Cruise control or adaptive cruise control switches.
23. Driver's airbag and horn.
24. Audio switches (see Audio System Handbook).
25. Valet switch.
26. Adaptive cruise control forward alert switch (where fitted).
27. Luggage compartment release switch (see Section 2).
28. Fuel filler flap release switch.

Where not referenced above, for further detail about instruments and controls refer to Section 4.

Controls and Instruments



JOL2064a

1. Low oil pressure (without navigation screen).
2. Clock (without navigation screen).
3. Battery charge indicator (without navigation screen).
4. Low fuel level.
5. High coolant temperature.
6. Right-hand direction indicator.
7. Sidelights.
8. Charge indicator (navigation screen fitted).

9. Parkbrake on, brake fluid low.
10. Main beam.
11. Airbag.
12. Priority warning for message centre – Red.
13. Priority warning for message centre – Amber.
14. Adaptive cruise control.
15. Driver's seat belt.
16. Anti-lock braking system (ABS).

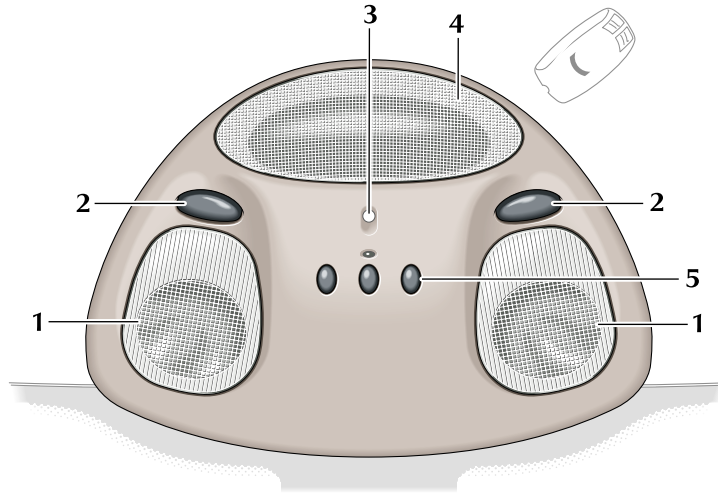
17. Low oil pressure (Navigation screen fitted).

18. Check engine.

19. Left-hand indicator.

Note: If a navigation screen is fitted, the clock is part of the navigation system, refer to the Navigation Handbook for altering the clock time.

For further detail about instruments and warning lamps refer to Section 4.



JOL2065a

Overhead console

1. Reading/map lights, left and right-hand.
2. Reading/map lights, left and right-hand switches.
3. Interior roof light (amber).
4. Passenger occupancy ultra-sonic sensors.
5. HomeLink Universal Transceiver. The transceiver can be programmed to transmit three different frequencies to activate garage doors, gates, home lighting, security systems.

Contents

1. Owner information

General information	1-1
Warnings, Cautions and Notes	1-2
Health and safety	1-3
Regular servicing.	1-4
Vehicle identification	1-5
Warranties (USA and Canada)	1-5
Warranties (Mexico)	1-5
Protect the environment.	1-6
Mobile/portable telephones	1-6
Window tinting.	1-6

2. Security and locks

Introduction	2-1
Key operation	2-2
Key-ring transmitter	2-4
Ignition/starter switch and steering lock	2-7
Luggage compartment.	2-9
Interior door lock operation	2-11
Radio frequency	2-14
HomeLink® Universal Transceiver.	2-15

3. Before driving

Occupant protection.	3-1
Seat belts.	3-1
Airbags	3-3
Child safety.	3-10

3. Before driving (continued)

Seat adjustment	3-15
Front seat adjustment	3-15
Seat back tilt	3-16
Front seat heaters	3-16
Driving position memory system.	3-17
Setting a driving position (Memory set)	3-17
Steering column tilt and reach adjustment	3-18
Footrest adjustment	3-19
Luggage retaining net	3-19
Rear view mirrors	3-20
Interior mirror (no compass)	3-21
Interior mirror with compass	3-21
Power-operated convertible top	3-24
Manual closure of convertible top.	3-25
Convertible top cover	3-27

4. On the road

Instruments	4-1
Warning lamps	4-3
Message centre.	4-6
Messages	4-8
Audible warnings	4-12
Trip computer.	4-14
Exterior lighting	4-16
Interior lighting.	4-20
Automatic transmission	4-21
'J' Gate selector	4-21

4. On the road (continued)

Dynamic stability control (DSC)	4-24
Anti-lock braking system (ABS)	4-25
Cruise (speed) control	4-27
Cruise control automatic switch off	4-28
Adaptive cruise control (ACC)	4-28
Window operation	4-35
Parkbrake.	4-37
Windscreen wipers and washers	4-37
Headlamp powerwash	4-39
Interior features	4-40
Reverse park control	4-42
Fuel and refuelling	4-43
General driving information.	4-48
Winter driving	4-49
Touring.	4-49

5. Climate control

Introduction.	5-1
Climate control system.	5-4

6. Roadside emergency

Inertia switch	6-1
Emergency starting.	6-2
Wheel changing and jacking.	6-4
Vehicle recovery	6-10
Bulb renewal	6-13
Bulb chart.	6-18
Fuses and fuse boxes	6-19
Fuse ratings and circuits	6-22
Fire extinguisher	6-27

7. Maintenance

General maintenance.	7-1
Hood release control	7-4
Regular checks	7-5
Checking and top up	7-7
Cooling system.	7-11
Recommended engine oil.	7-12
Capacities.	7-13
Battery	7-14
Alternator.	7-14
Windscreen wipers	7-17
Tyres	7-18
Winter (snow) tyres	7-21
Vehicle care.	7-22
Interior care	7-22
Exterior care.	7-23
Electrical accessories	7-25

Contents

8. Specifications

Vehicle data	8-1
Weights	8-2
Trunk-rack capacity	8-4
Dimensions (coupe and convertible)	8-5
Wheels and tyres	8-6

A comprehensive index is located at the back of this Handbook.